

# Service Manual

**Air Conditioner**

**Indoor Unit  
CS-ME5RKUA  
CS-ME7RKUA**

**Destination  
USA  
Canada**



Please file and use this manual together with the service manual for Model No. CU-2E18NBU, CU-5E36QBU and CU-3E19RBU CU-4E24RBU, Order No. PHAAM1111120A1, PAPAMY1312037CE and PAPAMY1505100CE.

## **WARNING**

This service information is designed for experienced repair technicians only and is not designed for use by the general public. It does not contain warnings or cautions to advise non-technical individuals of potential dangers in attempting to service a product. Products powered by electricity should be serviced or repaired only by experienced professional technicians. Any attempt to service or repair the products dealt with in this service information by anyone else could result in serious injury or death.

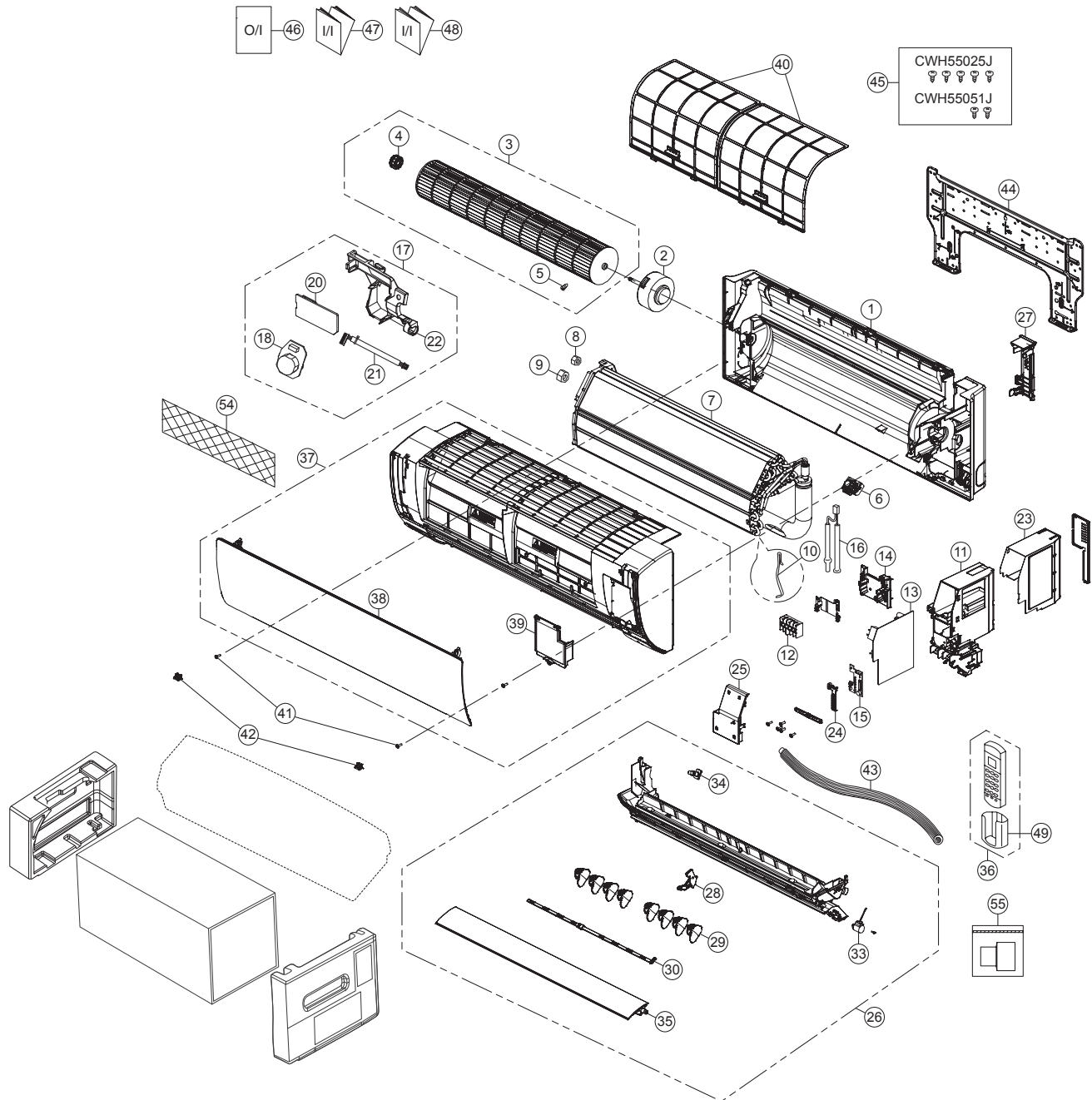
## **PRECAUTION OF LOW TEMPERATURE**

In order to avoid frostbite, be assured of no refrigerant leakage during the installation or repairing of refrigerant circuit.

# Panasonic<sup>®</sup>

# 14. Exploded View and Replacement Parts List

## 14.1 Indoor Unit




**Note**  
The above exploded view is for the purpose of parts disassembly and replacement.  
The non-numbered parts are not kept as standard service parts.

SAFETY	REF. NO.	DESCRIPTION & NAME	QTY	CS-ME5RKUA	REMARK
	1	CHASSIS COMPLETE	1	CWD50C1633	
	2	FAN MOTOR	1	L6CBYYL0055	O
	3	CROSS FLOW FAN COMPLETE	1	CWH02C1076	
	4	BEARING	1	CWH64K007	
	5	SCREW	1	CWH551146	
	7	EVAPORATOR CO.	1	CWB30C3504	
	8	FLARE NUT (1/4) - LIQUID	1	CWT251030	
	9	FLARE NUT (3/8) - GAS	1	CWT251031	
	11	CONTROL BOARD CASING	1	CWH102605A	
	12	TERMINAL BOARD COMPLETE	1	CWA28C2357	
	13	ELECTRONIC CONTROLLER - MAIN	1	CWA73C9301	O
	15	ELECTRONIC CONTROLLER - INDICATOR	1	CWA748158	O
	16	SENSOR COMPLETE	1	CWA50C2800	O
	17	SENSOR COMPLETE (ECO)	1	CWA50C2820	O
	18	ELECTRONIC CONT (ECO SENSOR)	1	CWA745791	
	20	ELECTRONIC CONT (COMPARATOR)	1	CWA746769	
	21	LEADWIRE-PCB ECO	1	CWA67C9786	
	23	CONTROL BOARD TOP COVER	1	CWH131467	
	24	INDICATOR HOLDER	1	CWD933406	
	25	CONTROL BOARD FRONT COVER CO.	1	CWH13C1333	
	26	DISCHARGE GRILLE COMPLETE	1	CWE20C3495	
	27	BACK COVER CHASSIS	1	CWD933233B	
	28	FULCRUM	1	CWH621131	
	29	VERTICAL VANE	8	CWE241374	
	30	CONNECTING BAR	1	CWE261251	
	33	AIR SWING MOTOR	1	CWA981264	O
	34	CAP	1	CWH521096	
	35	HORIZONTAL VANE COMPLETE	1	CWE24C1385	
	36	REMOTE CONTROL COMPLETE	1	CWA75C4567	O
	37	FRONT GRILLE COMPLETE	1	CWE11C5960	O
	38	INTAKE GRILLE COMPLETE	1	CWE22C1946	
	39	GRILLE DOOR COMPLETE	1	CWE14C1131	
	40	AIR FILTER	2	CWD001279	O
	41	SCREW-F/GRILLE MOUNT	2	XTT4+16CFJ	
	42	CAP-FRONT GRILLE	2	CWH521227	
	43	DRAIN HOSE	1	CWH851173	
	44	INSTALLATION PLATE	1	CWH361134	
	45	BAG COMPLETE - INSTALLATION SCREW	1	CWH82C1705	
	46	OPERATING INSTRUCTION	1	CWF569978	
	47	INSTALLATION INSTRUCTION	1	CWF616708	
	48	INSTALLATION INSTRUCTION	1	CWF616709	
	49	REMOTE CONTROL HOLDER	1	CWH361078	
	54	AIR PURIFYING FILTER	1	CWD00C1141	
	55	BAG COMPLETE (TUBE CONNECTOR)	1	CWH82C2030	

(Note)

- All parts are supplied from PHAAM, Malaysia (Vendor Code: 00029488).
- "O" marked parts are recommended to be kept in stock.

SAFETY	REF. NO.	PART NAME & DESCRIPTION	QTY.	CS-ME7RKUA	REMARK
	1	CHASSIS COMPLETE	1	CWD50C1633	
	2	FAN MOTOR	1	L6CBYYL0055	O
	3	CROSS-FLOW FAN COMPLETE	1	CWH02C1076	
	4	BEARING ASSY	1	CWH64K007	
	5	SCREW - CROSS - FLOW FAN	1	CWH551146	
	6	PARTICULAR PIECE	1	CWD933067	
	7	EVAPORATOR	1	CWB30C5033	
	8	FLARE NUT (LIQUID)	1	CWT251030	
	9	FLARE NUT (GAS)	1	CWT251031	
	10	CLIP FOR SENSOR	1	CWH321085	
	11	CONTROL BOARD CASING	1	CWH102605A	
	12	TERMINAL BOARD COMPLETE	1	CWA28C2357	O
	13	ELECTRONIC CONTROLLER - MAIN	1	CWA73C9225	O
	14	PARTICULAR PIECE - TERMINAL	1	CWD933137A	
	15	ELECTRONIC CONTROLLER - INDICATOR	1	CWA748158	O
	16	SENSOR COMPLETE	1	CWA50C3228	O
	17	SENSOR COMPLETE (ECO)	1	CWA50C2820	O
	18	ELECTRONIC CONTROLLER (ECO SENSOR)	1	CWA745791	
	20	ELECTRONIC CONTROLLER (COMPARATOR)	1	CWA746769	
	21	LEAD WIRE - PCB ECO	1	CWA67C9786	
	22	CONTROL BOARD CASING FOR PCB ECO	1	CWD933427	
	23	CONTROL BOARD TOP COVER	1	CWH131467	
	24	INDICATOR HOLDER	1	CWD933406	
	25	CONTROL BOARD FRONT COVER CO.	1	CWH13C1333	
	26	DISCHARGE GRILLE COMPLETE	1	CWE20C3495	
	27	BACK COVER CHASSIS	1	CWD933233B	
	28	FULCRUM	1	CWH621131	
	29	VERTICAL VANE	8	CWE241374	
	30	CONNECTING BAR	2	CWE261251	
	33	AIR SWING MOTOR	1	CWA981264	
	34	CAP - DRAIN TRAY	1	CWH521259	
	35	HORIZONTAL VANE COMPLETE	1	CWE24C1385	
	36	REMOTE CONTROL COMPLETE	1	CWA75C4567	O
	37	FRONT GRILLE COMPLETE	1	CWE11C5960	O
	38	INTAKE GRILLE COMPLETE	1	CWE22C1946	
	39	GRILLE DOOR COMPLETE	1	CWE14C1131	
	40	AIR FILTER	2	CWD001279	O
	41	SCREW - FRONT GRILLE	2	XTT4+16CFJ	
	42	CAP - FRONT GRILLE	2	CWH521227	
	43	DRAIN HOSE	1	CWH851173	
	44	INSTALLATION PLATE	1	CWH361134	
	45	BAG COMPLETE - INSTALLATION SCREW	1	CWH82C1705	
	46	OPERATING INSTRUCTION	1	CWF569978	
	47	INSTALLATION INSTRUCTION	1	CWF616708	
	48	INSTALLATION INSTRUCTION	1	CWF616709	
	49	REMOTE CONTROL HOLDER	1	CWH361078	

SAFETY	REF. NO.	PART NAME & DESCRIPTION	QTY.	CS-ME7RKUA	REMARK
	54	AIR PURIFYING FILTER	1	CWD00C1141	
	55	BAG COMPLETE (TUBE CONNECTOR)	1	CWH82C2030	

(Note)

- All parts are supplied from PHAAM, Malaysia (Vendor Code: 00029488).
- "O" marked parts are recommended to be kept in stock.