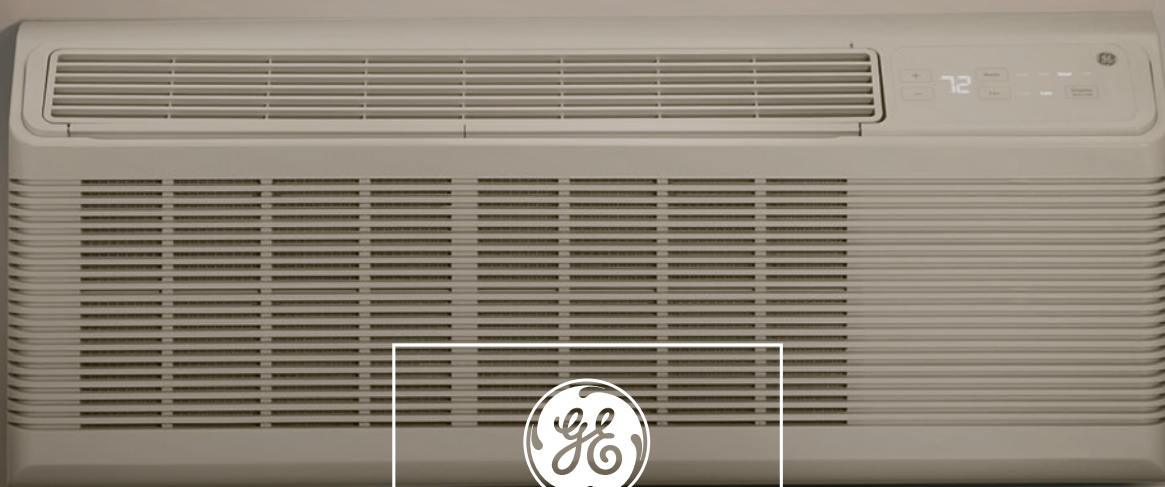


PRELIMINARY

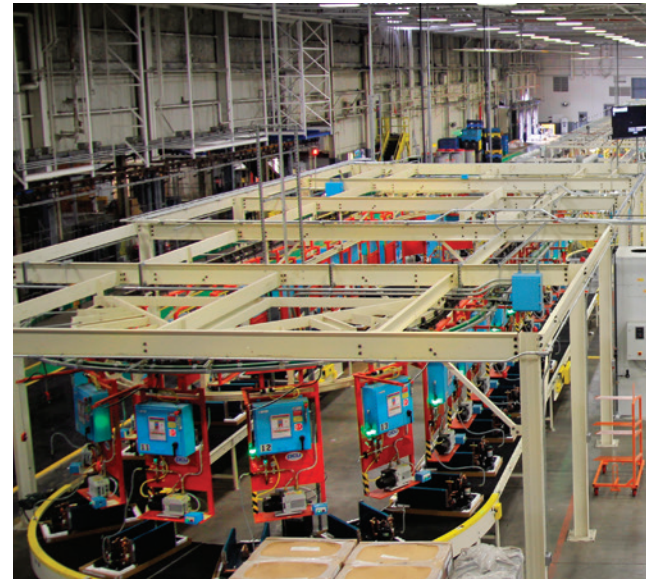
NEW PRODUCT GUIDE

*Zoneline® Packaged Terminal
Air Conditioners*



GE APPLIANCES

Zoneline®



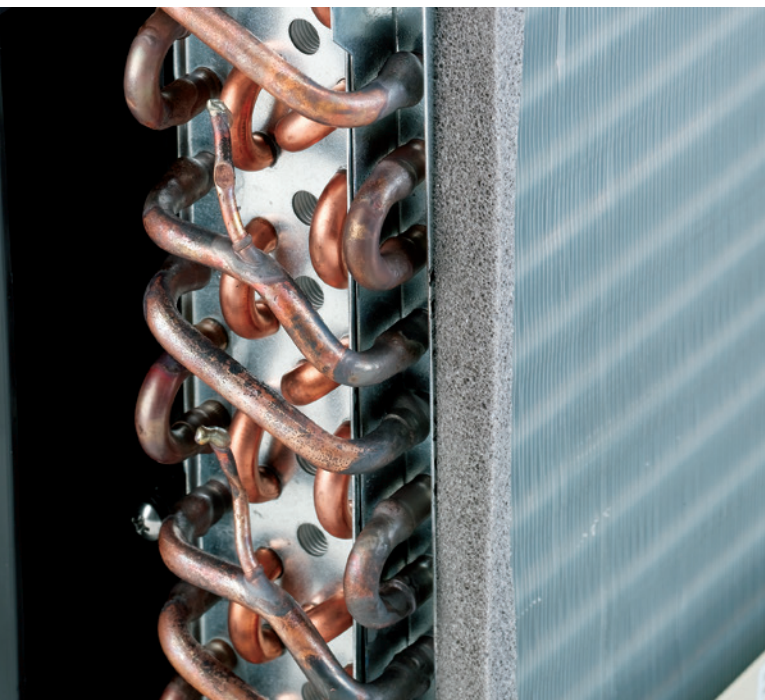
GE ZONELINE®

A Story of American Invention

In 1961, the GE Zonline® PTAC began making its way into hotels and motels across the country, changing the face of comfort on the road.

Now, over 50 years later, GE Zonline has been reinvented in Louisville, Kentucky, to meet the changing needs of America's hotel industry. The newest GE Zonline PTACs are engineered to be more reliable, efficient, quieter and incredibly easy to install and maintain.





KEY BENEFITS HOTELIERS WILL LOVE

*The new GE Zoneline leads the
industry in four categories:*

RELIABLE

QUIET

EFFICIENT

NEW APPEARANCE



RELIABLE

With over one million units installed across the U.S. and remarkably low service issues, GE Zoneline® PTACs offer unrivaled reliability, consistent performance and constant guest comfort.

UNMATCHED SERVICE & SUPPORT

GE Appliances is the only manufacturer with a dedicated factory service network and field team. Our technicians service your Zoneline—and any other GE appliances you have—in no time, so guest comfort is not compromised.

FEATURE HIGHLIGHTS:

REDESIGNED STRUCTURE | *Simplified and streamlined so servicing is faster and easier than ever before.*

PREMIUM GUARD CORROSION PROTECTION | *Special coatings keep each part performing at peak condition, longer.*

EASY TO SERVICE | *New Zonelines have integrated structural components for easy maintenance and support.*

IMPROVED DESIGN | *Rustproof base pan comes standard on all models.*

SERVICE DIAGNOSTICS PORT | *Technicians can quickly diagnose problems.*

QUICK CONNECT | *The thermostat, central desk control and external fan can be connected in seconds for faster installation and servicing.*

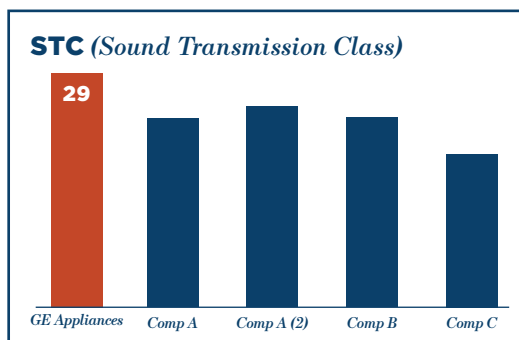


QUIET

Quiet operation has always been a strong suit of Zoneline®. It's the quietest PTAC when compared to leading competitors*, so you know your guests will always get a good night's rest.

WHERE IT COUNTS

Typical outdoor noises such as those from traffic or airports present challenges to hotel owners every day. When tested against leading competitors, GE Zonelines block the most outdoor noise with a sound transmission class of 29*—that's the highest PTAC STC on the market. That means Zonelines help guests sleep better and can support high guest ratings for hotel and motel properties.



Guests who are dissatisfied with the room noise or temperature:

33%
ARE NOT LIKELY
TO RECOMMEND
THE HOTEL**

66%
ARE NOT LIKELY
TO RETURN TO
THE HOTEL**

GE Appliances Zonelines provide quiet comfort for hotel rooms.

FEATURE HIGHLIGHTS:

BAKED-ON MASTIC | A heavy-duty barrier covers the back of the unit for superior sound insulation.

WEATHER BARRIER SYSTEM SEAL | A seal around the perimeter of the unit keeps noise and dirt outside.

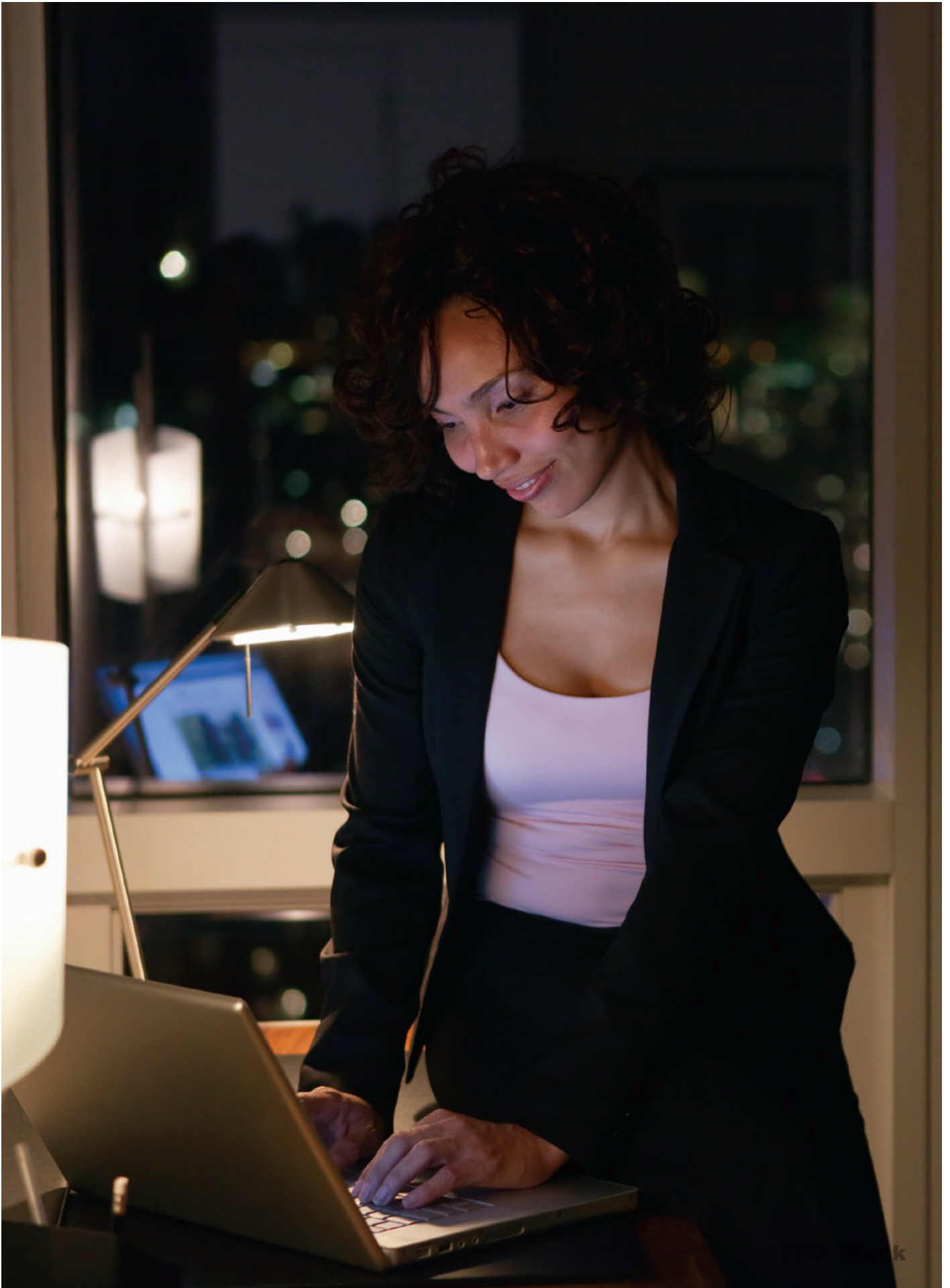
TWO DC FAN MOTORS | A motor for each fan reduces noise by dialing in the exact airflow needed for each heating and cooling function.

LARGE CROSS-FLOW BLOWER | Airflow is optimized for a low, balanced sound that is hardly noticeable.

SMART FAN COOLING/HEATING | Allows the fan to run in either continuous mode during hot weather or cycle mode during the winter months, saving energy and improving guest comfort.

*12,000 BTU/h heat pump models tested by independent third-party testing at a national acoustical lab, conducted March 2015 and October 2015, in accordance with ASTM and AHRI standards. The higher the STC rating, the better the unit blocks outside noise.

**Clarabridge Ratings and Reviews, for hospitality data collected July 2013 – June 2014. "Americans' biggest complaints about hotels" Forbes Magazine, July 27, 2012 issue.



FPD Work

EFFICIENT

GE Zonline® PTACs are highly efficient. Zonline heat pumps can save a property hundreds of dollars per month in utility expenses.* On average, Zonline is 8% more efficient than the leading competitor for 7,000 BTUh and 9,000 BTUh electric resistance heat models, for more savings per room, per year.** That all adds up to lower operation costs.

WHY IT MATTERS

Decreasing the energy usage of your properties can save you a lot of money. Since Zonline PTACs are one of the industry leaders in efficient operation, you'll be able to cut utility bills without compromising the comfort of your guests.

FEATURE HIGHLIGHTS:

REVERSE CYCLE DEFROST | *Prolongs heat pump operation, saving energy and money.*

ELECTRONIC TEMPERATURE LIMITING | *Limits are preset to save energy and avoid excessive temperature swings.*

HEAT & FREEZE SENTINELS | *Specially designed sentinels protect your property by preventing overheating or freezing.*

EXTENSIVE HEAT SOURCE LOGIC | *Smart technology lets each unit automatically select the right heat source to efficiently meet guest needs.*

SMART PROGRAMMING | *Every unit is programmed to balance guest comfort with efficient operation.*

*Savings depend on region, equipment, structure and other factors.

**GE Zonline AZ45 and AZ65 Series models for 7,000 BTUh and 9,000 BTUh electric resistance models, vs. leading competitor for comparable models with average EER values of listed models, per AHRI listing October 2015.



NEW APPEARANCE

The Zoneline® boasts a slimmer room front, sleek appearance and fresh color, providing an updated look that blends in seamlessly with any hotel décor and room design. Even though it has the same footprint for easy replacement, it also has the industry's slimmest room front, so Zoneline provides more open space for guests to enjoy.



STREAMLINED, INSIDE AND OUT

The new Zoneline looks sleeker on the outside, but is also more efficiently engineered inside.

FEATURE HIGHLIGHTS:

BACKLIT, COVERLESS CONTROL PANEL | *Improved display with large, white LED lights and no lid cover keep this unit looking like new.*

SLEEK APPEARANCE | *Enjoy the same case dimensions with a shallower depth for more usable room space.*

FRESH COLOR | *Perfectly blends in with modern interior designs.*

DIMMING DISPLAY | *Automatic dimming feature makes sure LED lights are never too bright at night.*



FEATURE HIGHLIGHTS

The new Zoneline® continues a legacy of energy efficiency and guest comfort, thanks to innovative features that property managers love.



BLOWER & DC MOTORS

Cross-flow blower, two DC fan motors and smart fan cooling and heating keep the unit quiet while providing efficient heating and cooling performance



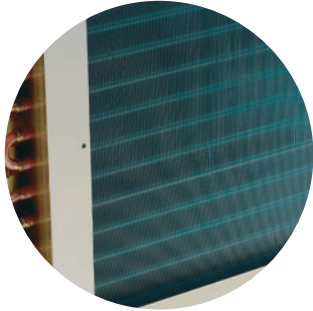
HEAT & FREEZE SENTINEL

Keeps room from overheating or freezing to increase efficiency and comfort while decreasing operating and maintenance costs



SYSTEM COMPATIBILITY

Compatible with a wide variety of thermostats and energy management systems, including central desk control



PREMIUM GUARD CORROSION PROTECTION*

Special coatings, paintings and stainless steel ensure lasting performance in challenging environments such as oceanfront properties

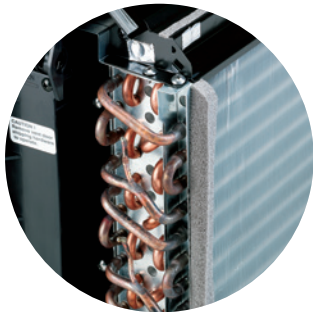


HEAT PUMP FEATURES

Reverse cycle defrost increases efficiency and allows unit to run in heat pump mode longer

Backup resistance heat delivers quick heating comfort

Internal Condensate Removal (ICR) also available on select models



DRY AIR 25°

Patented dehumidifier heat pipe removes up to 25% more humidity from a room

Ideal for properties in ocean environments and high-humidity areas



ELECTRONIC TOUCH CONTROLS

Easy-to-use controls with clear LED readout provide a user-friendly experience



WEATHER BARRIER SYSTEM SEAL

Keeps noise, dirt and grime outside

Creates a quieter room and more efficient operation

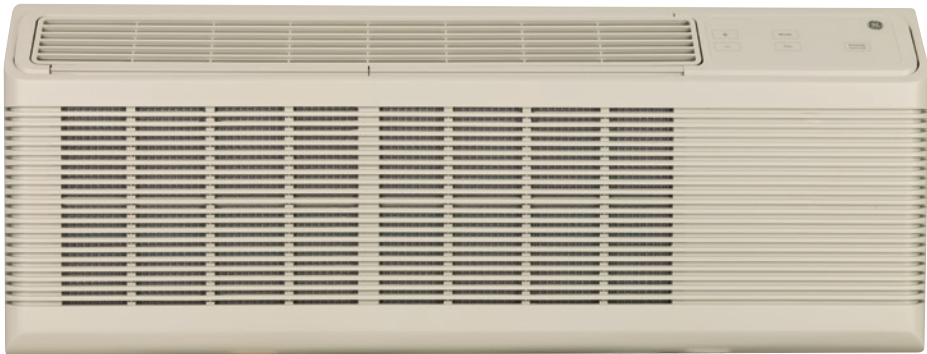


ELECTRONIC TEMPERATURE LIMITING

Prevents expensive overcooling and overheating of rooms

Limits are automatically set, so seasonal adjustments aren't necessary

RESISTANCE HEAT



4500 SERIES
RESISTANCE HEAT UNITS*

- Digital LED display
- Solid-state thermostat
- Variable vent control
- Automatic indoor frost control
- 2 DC fan motors
- Heat & Freeze Sentinel
- Remote thermostat capability
- Models with Premium Guard Corrosion Protection are also available*



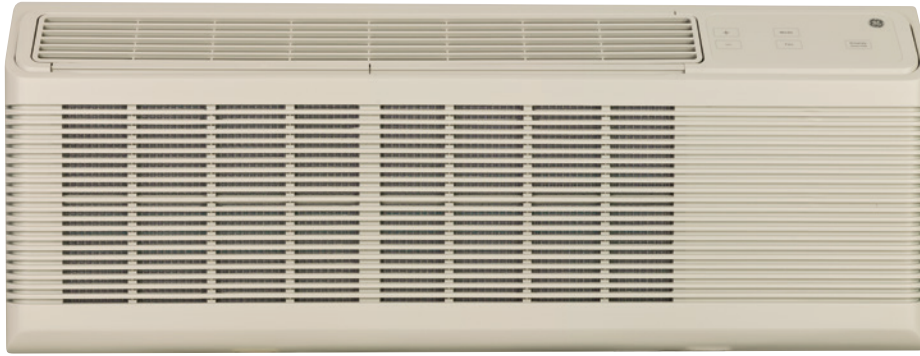
4500 SERIES | COOLING & ELECTRIC RESISTANCE HEAT

230/208V MODELS	AZ45E07D	AZ45E09D	AZ45E12D	AZ45E15D
Cooling BTUh	7,200/7,000	9700/9600	11,800/11,500	14,900/14,800
EER (BTUh/Watt)	13.4/13.4	12.1/12.1	11.8/11.8	10.5/10.5
Dehumidification Pts/Hr	1.7	2.7	3.5	4.6
Refrigerant type	R-410A	R-410A	R-410A	R-410A
CFM, indoor fan high	290	340	420	409
CFM, indoor fan low	218	229	323	324
Power factor	89%	93%	93%	90%/92%
Sensible heat ratio @ 230 volts	80%	75%	70%	70%
Watts	535/520	800/790	1,010/1,000	1,415/1,405
Cooling amperes, F.L.	2.5/2.5	3.6/3.9	4.7/5.0	6.4/6.8
Amperes, L.R.	13.5	21.0	29.5	31.5
Weight (Net/Ship)	89/103	100/113	99/112	100.3/113.3

265V MODELS	AZ45E07E	AZ45E09E	AZ45E12E	AZ45E15E
Cooling BTUh	7,200	9,400	11,800	14,300
EER (BTUh/Watt)	12.3	12.0	11.1	10.3
Dehumidification Pts/Hr	1.7	2.7	3.5	4.6
CFM, indoor fan high	290	340	420	406
CFM, indoor fan low	215	229	323	324
Power factor	90%	91%	92%	92%
Sensible heat ratio @ 265 volts	80%	75%	70%	70%
Watts	580	805	1,025	1,385
Cooling amperes, F.L.	2.4	3.2	4.1	5.7
Amperes, L.R.	11.7	16.5	23.5	26.0
Weight (Net/Ship)	92/105	101/114	100/113	101/114

Specifications subject to change.
*Premium Guard Corrosion Protection model BTUh and watts may vary.

RESISTANCE HEAT



4500 SERIES DRY AIR 25 RESISTANCE HEAT UNITS

- Digital LED display
- Solid-state thermostat
- Variable vent control
- Automatic indoor frost control
- 2 DC fan motors
- Heat & Freeze Sentinel
- Remote thermostat capability
- Premium Guard Corrosion Protection standard on all Dry Air 25 models



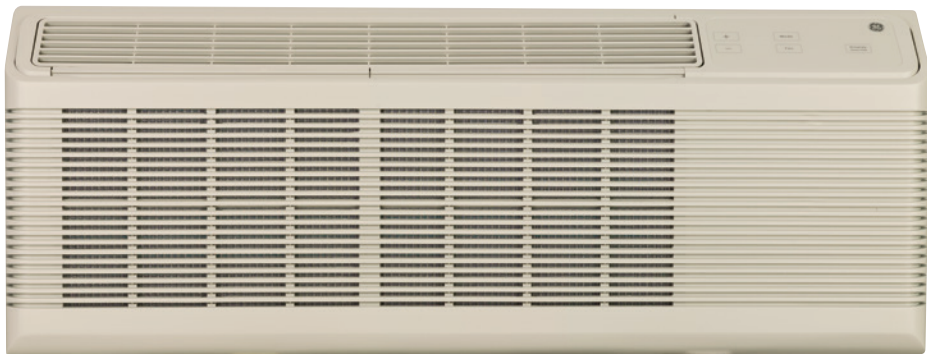
DRY AIR 25 SERIES | COOLING & ELECTRIC RESISTANCE HEAT

230/208V MODELS	AZ45E07DAP	AZ45E09DAP	AZ45E12DAP
Cooling BTUh	6,500/6,300	9,200/8,800	11,200/11,000
EER (BTUh/Watt)	11.9/11.9	11.5/11.5	10.8/10.8
Dehumidification Pts/Hr	2.3	3.4	4.4
Refrigerant type	R-410A	R-410A	R-410A
CFM, indoor fan high	220	280	330
CFM, indoor fan low	190	208	270
Power factor	86%/87%	92%	92%
Sensible heat ratio @ 230 volts	60%	60%	60%
Watts	555/535	790/765	1,035/1,015
Cooling amperes, F.L.	2.8/3.0	3.6/3.9	4.7/5.1
Amperes, L.R.	19.5	21.0	29.5
Weight (Net/Ship)	97.0/110.0	106/121	114/129

265V MODELS	AZ45E09EAP	AZ45E12EAP
Cooling BTUh	9,200	11,200
EER (BTUh/Watt)	11.5	10.8
Dehumidification Pts/Hr	2.7	3.5
CFM, indoor fan high	340	420
CFM, indoor fan low	229	323
Vent CFM (full open/partial open)	70/45	75/45
Power factor	91%	92%
Sensible heat ratio @ 265 volts	60%	60%
Watts	805	1,025
Cooling amperes, F.L.	3.2	4.1
Amperes, L.R.	16.5	23.5
Weight (Net/Ship)	101/114	100/113

Specifications subject to change.

HEAT PUMP



6500 SERIES HEAT PUMP UNITS*

- Staged heating
- Heat pump with resistance heat backup
- Electric resistance heat lockout
- Reverse cycle defrost
- Models with Premium Guard Corrosion Protection and ICR are also available**



6500 SERIES | HEAT PUMP UNITS*

230/208V MODELS	AZ65H07D	AZ65H09D	AZ65H12D	AZ65H15D
Cooling BTUh	7,100/6,900	9,700/9,600	12,100/11,900	14,400/14,200
EER (BTUh/Watt)	12.8/12.8	12.2/12.2	11.9/11.9	10.6/10.6
Dehumidification Pts/Hr	1.7	2.7	3.5	4.5
Refrigerant type	R-410A	R-410A	R-410A	R-410A
CFM, indoor fan high	340	360	370	370
CFM, indoor fan low	194	212	284	290
Power factor	91%	92%	92%	91%/92%
Cooling watts	545/535	795/785	1,015/1,000	1,355/1,335
Cooling amperes, F.L.	2.5/2.7	3.6/3.8	4.5/4.9	6.1/6.5
Amperes, L.R.	13.5	21.0	29.5	31.5
Reverse cycle heat BTU	6,200/6,100	8,100/8,000	10,500/10,400	13,400/13,300
COP	3.9/3.9	3.7/3.7	3.6/3.6	3.3/3.3
Heating watts	465/455	650/635	855/835	1,190/1,180
Heating amperes	2.2/2.3	3.1/3.3	4.1/4.5	5.2/5.6
Weight (Net/Ship)	94/107	101/114	102/115	101/114

265V MODELS	AZ65H07E	AZ65H09E	AZ65H12E	AZ65H15E
Cooling BTUh	7,000	9,400	11,700	14,400
EER (BTUh/Watt)	12.8	12.2	11.6	10.6
Dehumidification Pts/Hr	1.7	2.7	3.5	4.5
Refrigerant type	R-410A	R-410A	R-410A	R-410A
CFM, indoor fan high	340	360	370	370
CFM, indoor fan low	194	211	284	290
Vent CFM (full open/partial open)	50/40	70/45	75/45	75/45
Power factor	92%	90%	92%	93%
Sensible heat ratio @ 265 volts	85%	75%	70%	65%
Cooling watts	540	760	1,015	1,355
Cooling amperes, F.L.	2.2	3.1	4.0	5.4
Amperes, L.R.	11.7	16.5	23.5	26.0
Reverse cycle heat BTU	6,200	8,100	10,700	13,500
COP	3.9	3.6	3.6	3.3
Heating watts	455	665	880	1,270
Heating amperes	2.0	2.7	3.6	5.0
Weight (Net/Ship)**	97/117	106/119	107/120	106/119

*Premium Guard Corrosion Protection model BTUh and watts may vary.

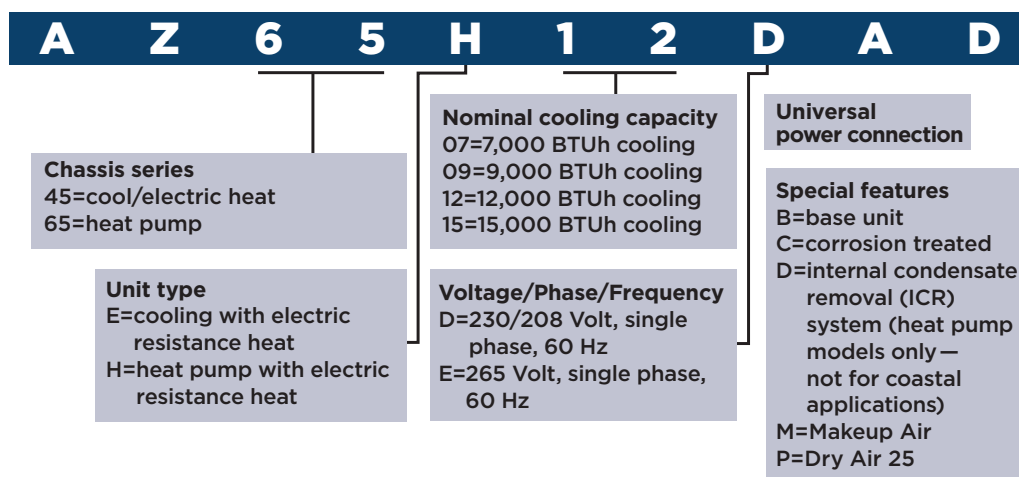
**ICR adds 3 pounds to unit weight.

Specifications subject to change.

GE APPLIANCES ZONELINE® WARRANTY

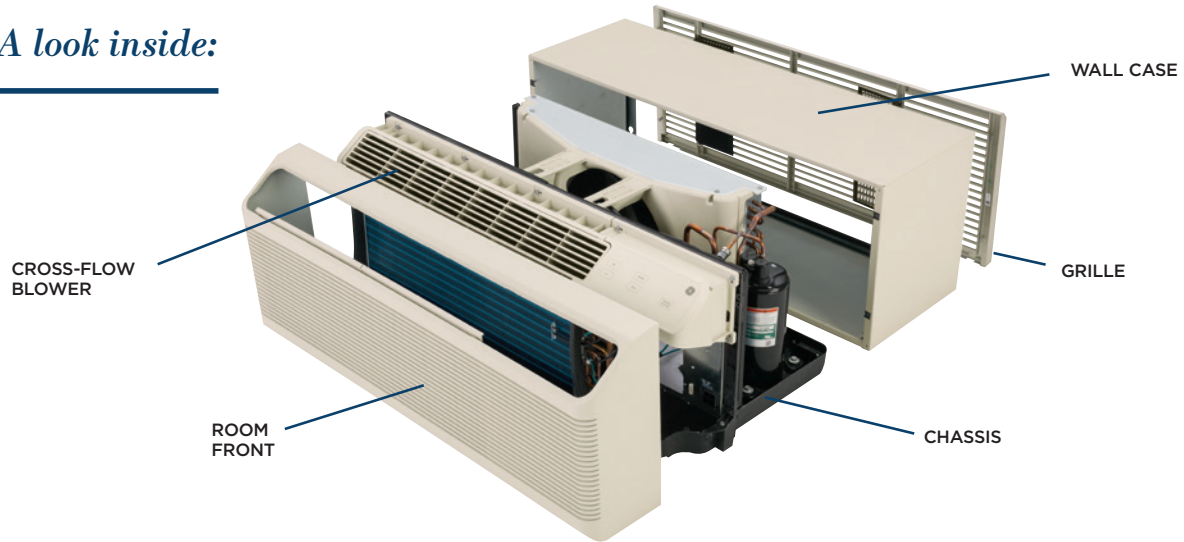
FOR THE PERIOD OF	GE APPLIANCES WILL REPLACE
ONE YEAR <i>From the date of the original purchase</i>	Any part of the air conditioner which fails due to a defect in materials or workmanship. During this limited one-year warranty , GE will provide, free of charge , all labor and related service costs to replace the defective part.
FIVE YEARS <i>From the date of the original purchase</i>	Sealed Refrigerating System , if any part of the Sealed Refrigerating System (the compressor, condenser, evaporator, and all connecting tubing) should fail due to a defect in materials or workmanship. During this limited five-year warranty , GE will provide, free of charge , all labor and related service costs to replace the defective part.
SECOND THROUGH FIFTH YEAR <i>From the date of the original purchase</i>	Fan Motors, Switches, Thermostat, Heater, Heater Protectors, Compressor Overload, Solenoids, Circuit Boards, Auxiliary Controls, Thermistors, Freeze Sentinel, Frost Controls, ICR Pump, Capacitors, Varistors and Indoor Blower Bearing, if any of these parts should fail due to a defect in materials or workmanship. During this additional four-year limited warranty , the customer will be responsible for any labor and related service costs.

ZONELINE® CHASSIS NOMENCLATURE



ACCESSORIES

A look inside:



WALL CASE OPTIONS

RAB71B, RAB77B

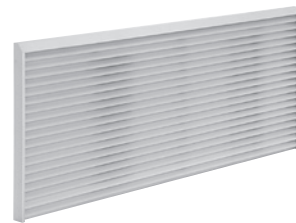
Extended sleeves available in 16" and 24" depths



THERMOSTATS

Digital – **RAK148D2, RAK164D2**

Programmable – **RAK148P2, RAK164P2**



GRILLE OPTIONS

Architectural rear grille

Extruded aluminum – **RAG67**

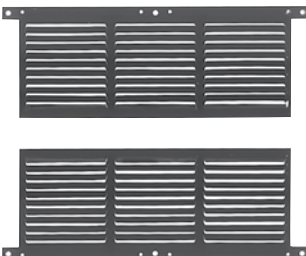
Stamped aluminum – **RAG60**

High-impact polymer grille

Beige – **RAG61**

Maple – **RAG62**

Bittersweet – **RAG63**



RETROFIT KITS

RAK40 Deflector kit



STANDARD SUB-BASE WITH POWER CORD INCLUDED

RAK204D15PA

RAK204D20PA

RAK204D30PA

POWER CONNECTION KITS ARE REQUIRED ON ALL ZONELINE CHASSIS. (See chart below)

The correct kit for the installation is determined by the voltage and amperage of the electrical circuit and the means of connecting the unit to the building wiring. If the unit is to be plugged into a receptacle, a line cord kit would be used; if the unit is to be permanently connected, a permanent connection kit would be used. Cord set units of 265 volts must be installed in compliance with National Electrical Code.®

POWER CONNECTION KITS

Required on all models. See specification information below for heater kWh and branch circuit ampacity.



RAK315P/320P/330P

230/208 volt line cord connection kit

Also available with short power cords



RAK315D/320D/330D

230/208 volt universal power supply kit



RAK515D/520D/530D

265 volt universal power supply kit

7,000/9,000 BTUH			
230/208 VOLT	LINE CORD CONNECTED UNITS		
LCDI Power Connection Kit	RAK315P	RAK320P	RAK330P
Heater kWh	2.4/1.99	3.42/2.83	4.83/3.98
Watts	2,401/1,989	3,418/2,825	4,827/3,984*
BTU	8,187/6,782	11,655/9,633	16,460/13,585
Amps	10.4/9.6	14.9/13.6	21.0/19.2
Min. circuit amps	15	20	30
Recommended protective device	15 amp time-delay fuse or breaker	20 amp time-delay fuse or breaker	30 amp time-delay fuse or breaker

7,000/9,000 BTUH		
265 VOLT PERMANENT CONNECTED UNITS** (CORD SET)		
RAK515P	RAK520P	RAK530P
2.4	3.4	4.8
2,400	3,400	4,800
8,150	11,550	16,350
9.6	13.3	18.6
15	20	30
15 amp time-delay fuse or breaker	20 amp time-delay fuse or breaker	30 amp time-delay fuse or breaker

7,000/9,000 BTUH			
230/208 VOLT	DIRECT CONNECTION KIT†		
	RAK315D	RAK320D	RAK330D
Heater kWh	2.4/1.99	3.42/2.83	4.83/3.98
Watts	2,401/1,989	3,418/2,825	4,827/3,984*
BTU	8,187/6,782	11,655/9,633	16,460/13,585
Amps	10.4/9.6	14.9/13.6	21.0/19.2
Min. circuit amps	15	20	30
Recommended protective device	15 amp time-delay fuse or breaker	20 amp time-delay fuse or breaker	30 amp time-delay fuse or breaker

7,000/9,000 BTUH		
265 VOLT DIRECT CONNECTION KIT†		
RAK515D	RAK520D	RAK530D
2.4	3.4	4.8
2,400	3,400	4,800*
8,150	11,550	16,350
9.6	13.3	18.6
15	20	30
15 amp time-delay fuse or breaker	20 amp time-delay fuse or breaker	30 amp time-delay fuse or breaker

*Wattage less when in low fan.

**To be used with sub-base.

†To be used with sub-base or connection to building wiring.

Specifications subject to change.

Wall case and exterior grille are also required for new construction.

Specs may vary for 12,000/9,000 BTUH models.

ADDITIONAL ACCESSORIES AVAILABLE

For example, drain kits, adapter, exterior air deflector kits and filters. Visit Zoneline.com for full listing.



GE APPLIANCES

Appliance Park
Louisville, KY 40225
geappliances.com
zoneline.com
888.231.2548