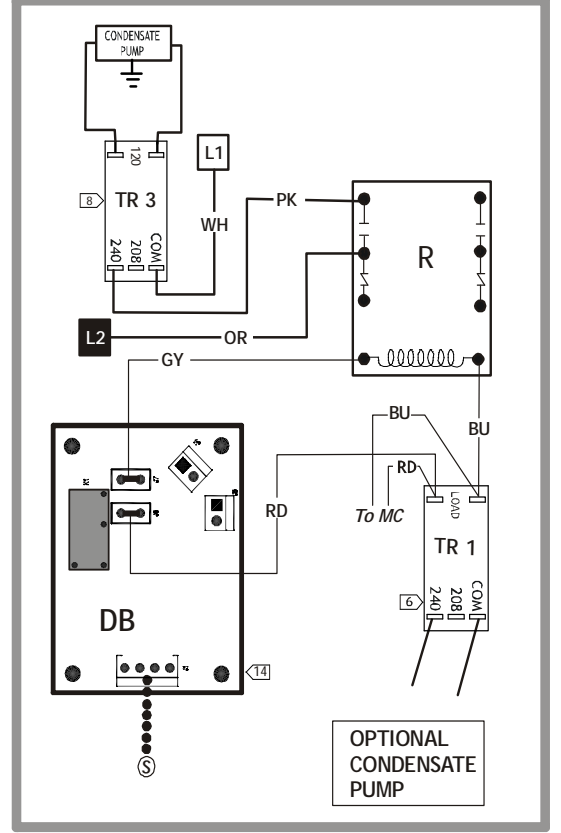
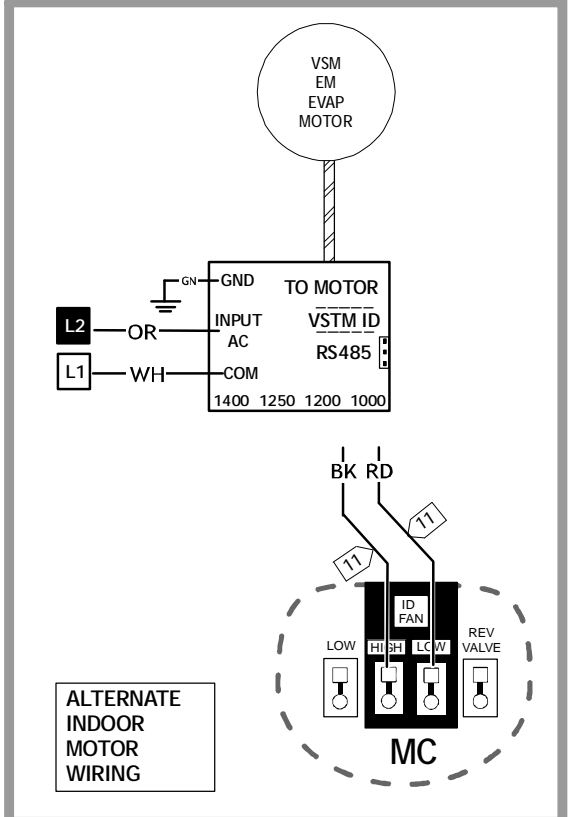
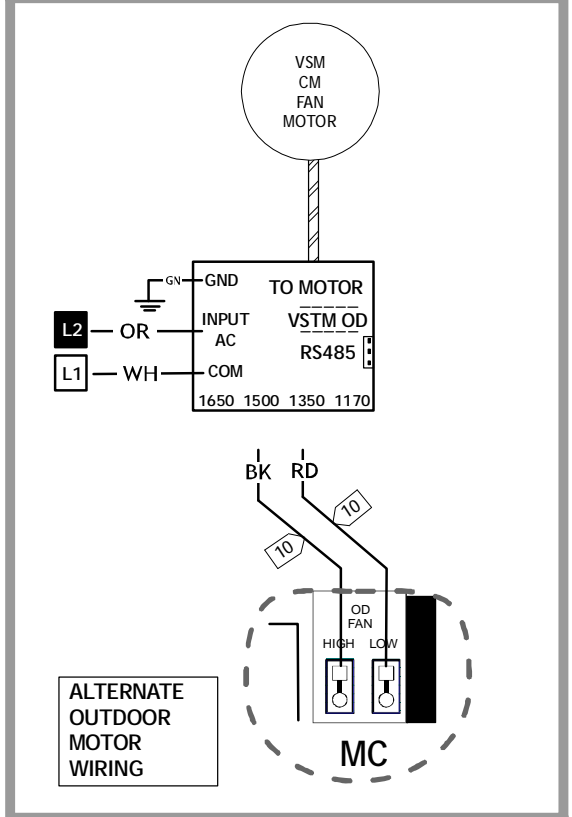
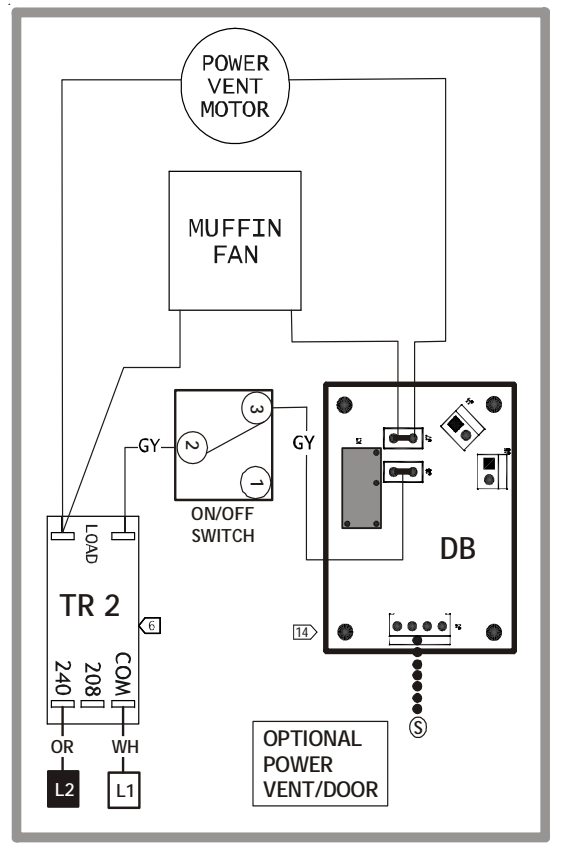
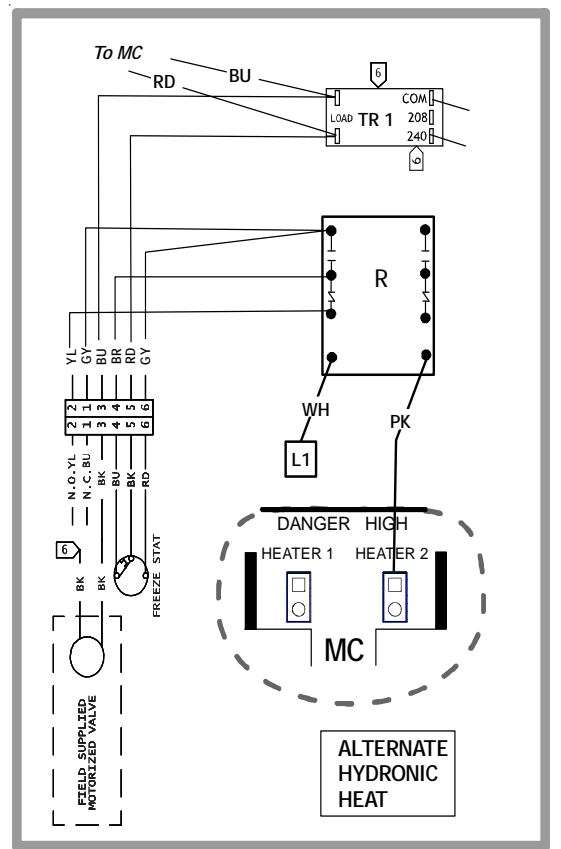
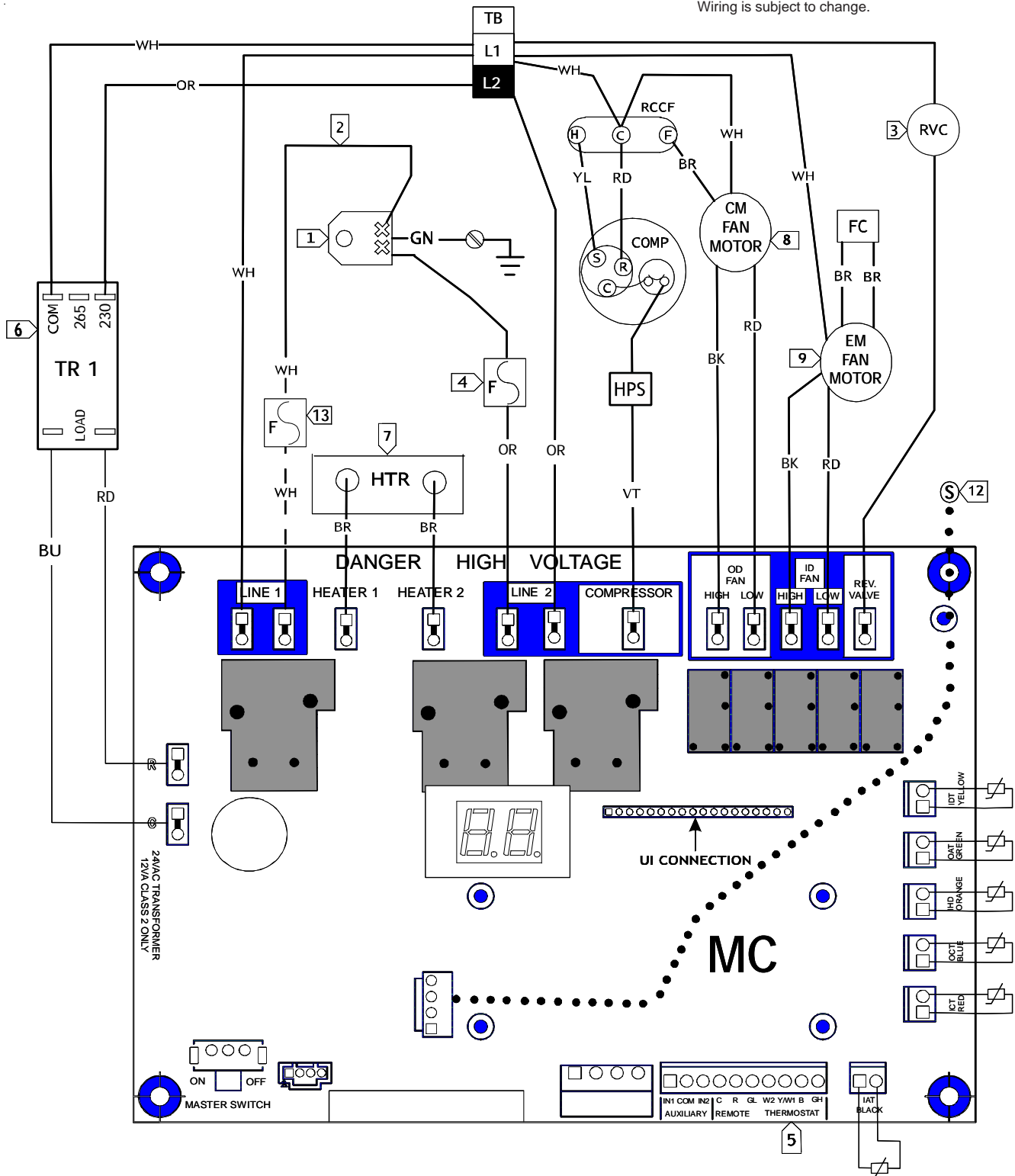


WIRING DIAGRAM

WARNING

HIGH VOLTAGE!
DISCONNECT ALL POWER BEFORE SERVICING OR INSTALLING THIS UNIT. MULTIPLE POWER SOURCE MAY BE PRESENT. FAILURE TO DO SO MAY CAUSE PROPERTY DAMAGE, PERSONAL INJURY OR DEATH.

Wiring is subject to change.



REMOTE THERMOSTAT OPERATION	
COOLING UNIT W/ELECTRIC HEAT	
FUNCTION	CONNECT R TO:
OFF	-----
FAN	G ^{**}
COOL	G, Y/W1
HEAT	G, W2 OR G, B, Y/W1 [†]
HEAT PUMP W/AUXILIARY ELECTRIC HEAT	
FUNCTION	CONNECT R TO:
OFF	-----
FAN	G ^{**}
COOL	G, Y/W1
1ST STAGE HEAT	G, B, Y/W1
2ND STAGE HEAT	G, W2

- NOTES:**
- 1 **WARNING: DISCONNECT POWER BEFORE SERVICING.** WIRING TO UNIT MUST BE PROPERLY POLARIZED (FOR 265V) AND GROUNDED.
 - 2 WHITE WIRE MUST BE CONNECTED AS SHOWN.
 - 3 ON HEAT PUMP MODELS ONLY.
 - 4 "OR" ON LINE 2 WITH FUSE SHOWN CONNECTED FOR 265V. OPTIONAL FOR 230V & 115 V, CONNECT POWER CORD TO LINE 2.
 - 5 FOR REMOTE OPERATION, SEE CONFIGURATION CHART.
 - 6 IF SUPPLY VOLTAGE IS 208V/230V, USE THE 230V OR 240V TAP ON TRANSFORMER.
IF SUPPLY VOLTAGE IS 265V, USE THE 265V TAP ON TRANSFORMER. 115V TRANSFORMER NOT SHOWN.
 - 7 SEE OPTIONAL HYDRONIC HEAT DIAGRAM FOR HOT WATER STEAM HEAT.
 - 8 SEE ALTERNATE WIRING FOR DC OUTDOOR MOTORS.
 - 9 SEE ALTERNATE WIRING FOR DC INDOOR MOTORS.
 - 10 SEE TABLE FOR OUTDOOR MOTOR SPEED SELECTION.
 - 11 SEE TABLE FOR INDOOR MOTOR SPEED SELECTION.
 - 12 SEE OPTIONAL WIRING DIAGRAMS FOR SERIAL CABLE CONNECTIONS.
 - 13 OPTIONAL FOR 208/230V.
 - 14 SET DIP SWITCHES PER TABLE.

- CM OUTDOOR FAN MOTOR
- COMP COMPRESSOR
- DB DAUGHTER BOARD
- EM EVAPORATOR MOTOR
- FC FAN CAPACITOR
- F FUSE
- HPS HIGH PRESSURE SWITCH
- HTR HEATER ELEMENT
- MC MAIN CONTROL
- R RELAY
- RCCF RUN CAPACITOR FOR COMPRESSOR AND FAN
- RVC REVERSING VALVE
- TR TRANSFORMER
- TB TERMINAL BLOCK
- VSM VARIABLE SPEED MOTOR
- VSTM VARIABLE SPEED TERMINAL BOARD

USE COPPER CONDUCTORS ONLY

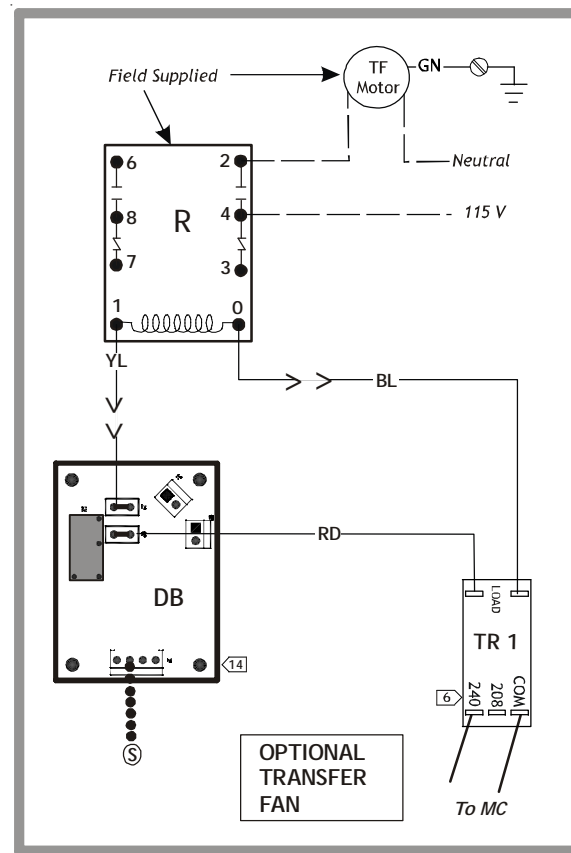
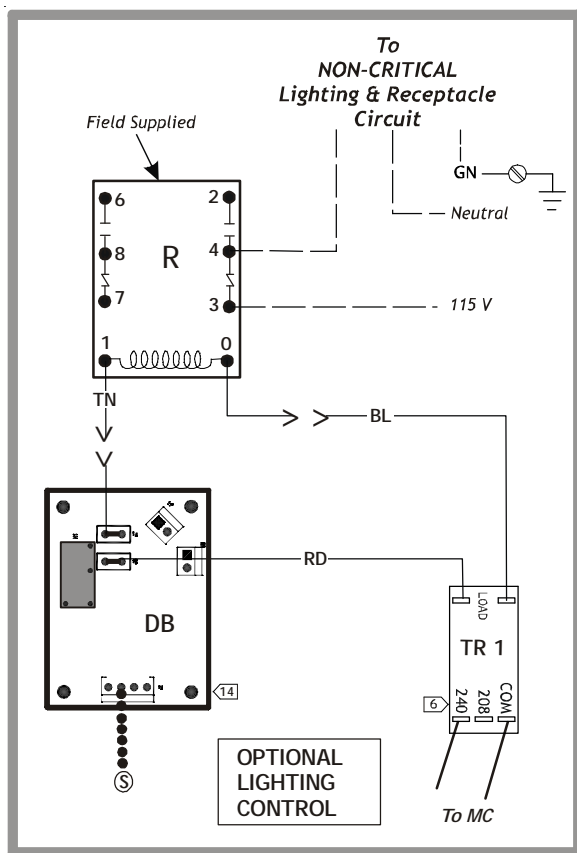
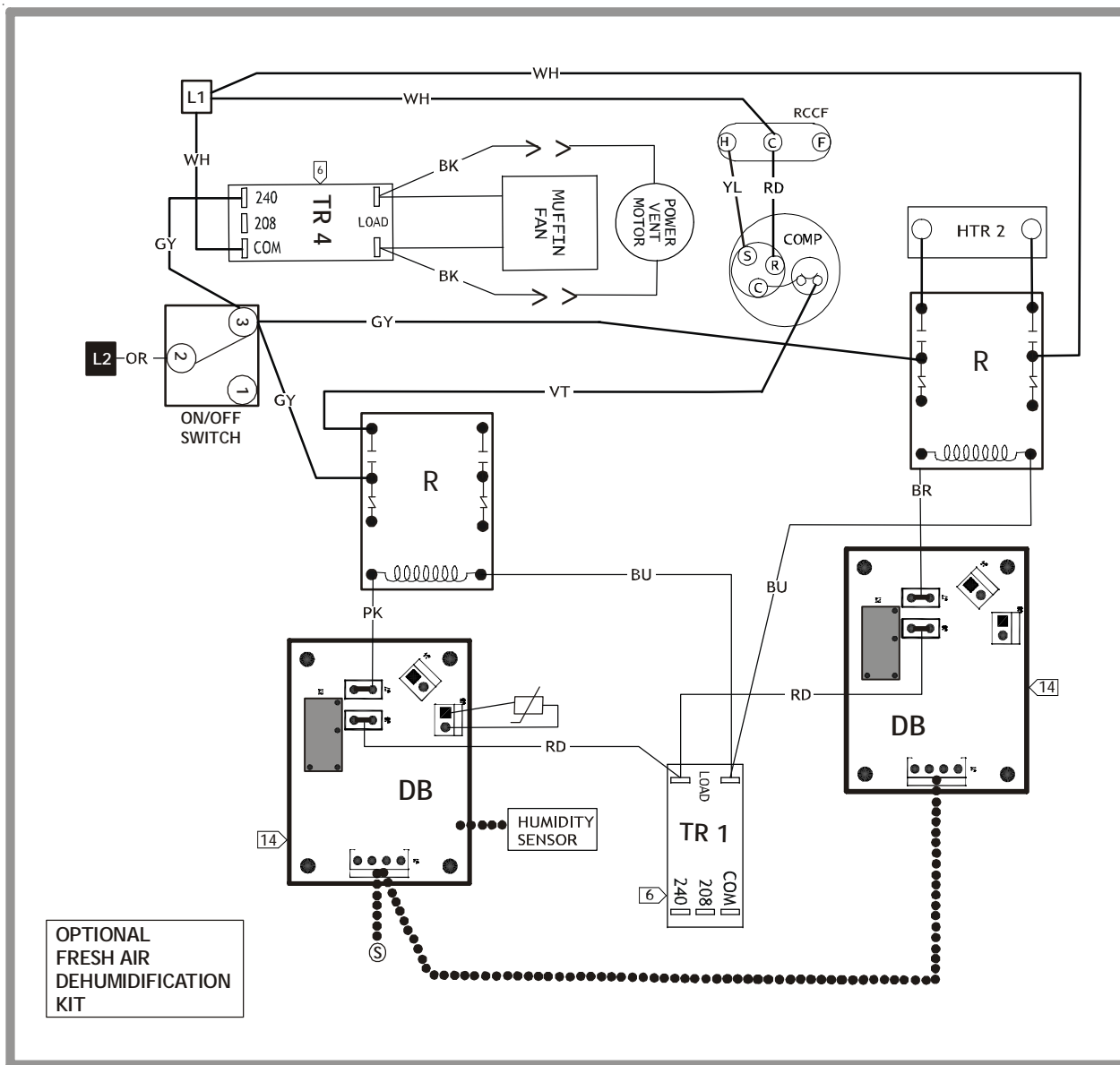
CHASSIS (GND) CONTROL PANEL

WIRE LEGEND

- HIGH VOLTAGE (FACTORY)
- HIGH VOLTAGE (FACTORY OR FIELD)
- LOW VOLTAGE (FACTORY OR FIELD)
- HIGH VOLTAGE DC HARNESS (FACTORY)



* FOR A HEAT PUMP THERMOSTAT USED ON A STRAIGHT COOL UNIT.
** GL - LOW SPEED
GH - HIGH SPEED



10

Outdoor Motor Speed Selection		
Model Starts With	High Speed VSTM Tap (Black Wire)	Low Speed VSTM Tap (Red Wire)
DRY093G(00 to 35)	1350	1170
DRY094G(00 to 35)	1350	1170
PTC173G	1500	1350

11

Indoor Motor Speed Selection		
Model Starts With	High Speed VSTM Tap (Black Wire)	Low Speed VSTM Tap (Red Wire)
PTH073G(00 to 35)	1250	1000

14

Daughter Board Device	Switch 1	Switch 2	Switch 3	Switch 4	Switch 5
Small Vent	0	0	0	0	1
Power Door / Vent	0	0	0	1	0
Transfer Fan	0	0	1	0	0
Condensate Pump	0	0	1	0	1
Lighting Control	0	1	0	0	0
DigiAIR™ Vent Comperssor	0	1	0	0	1
DigiAIR™Kit Heater	0	1	0	1	0

