

SUBMITTAL DATA SHEET

Air Handler Heat Pump System - BMTA24ENA-BNG1A18ACN

Location:	Approval:
Engineer:	Date:
Submitted to:	Construction:
Submitted by:	Unit #:
Reference:	Drawing #:



INDOOR SPECIFICATION

Dimension (W×D×H)	inch	14.49 x 20.98 x 17.99
	mm	368×533×457
Package (W×D×H)	inch	17.52 x 25.39 x 20.67
	mm	445×645×525
Net/Gross Weight	lbs	42/50
	kg	19/22.5

OUTDOOR SPECIFICATION

Compressor Type		ROTARY
Compressor Model		KSN140D58UFZ
Refrigerant		R454B
Refrigerant Oil Charge(mL)		440
Refrigerant Oil		VG74
Outdoor Air Flow (Max) (CFM)		1,413
Outdoor Noise Level (dBA)		54
Dimension (W×D×H)	inch	31.69 x 12.99 x 21.81
	mm	805×330×554
Package (W×D×H)	inch	36.02 x 14.57 x 24.21
	mm	915×370×615
Net/Gross Weight	lbs	66.80/73.41
	kg	30.3/33.3

EFFICIENCY

Heating			
SEER2	16	HSPF2-4	/
EER2	11.2	COP	/

PERFORMANCE of Cooling

Rated Capacity	18,000
Min/Max Capacity	5,100~21,100
Moisture Removal(L/h)	2.17
Standard Operating Range(℉/°C)	-13~122(-25~50)
Rated Cooling Conditions:	Indoor: 80℉ DB/67℉ WB Outdoor: 95℉ DB/75℉ WB

PERFORMANCE of Heating

Heating (Btu/hr)	
1. @ 47℉ Rated	/
1. @ 47℉ Min/Max Capacity	/
2. @ 17℉ Rated	/
3. @ 5℉ Rated: Capacity / COP	///
3. @ 5℉ Max: Capacity	/
Standard Operating Range(℉/°C)	/(/)
1. Rated Heating Conditions:	Indoor: 70℉ DB/60℉ WB Outdoor: 47℉ DB/43℉ WB

ELECTRICAL

Indoor Power Supply	24V,60Hz,1Ph
Indoor MCA 115V/(208/230V)	/
Indoor MOP	/
Outdoor Power Supply	208/230,60Hz,1Ph
Outdoor MCA	16
Outdoor MOP	20
Communication Wiring	AWG 20-2
Compressor RLA	12
Outdoor Fan Motor RLA	0.5
Outdoor Fan Motor W	/
Indoor Fan Motor RLA	/
Indoor Fan Motor W	/
System Power Input @ Cooling (W)	1,608(440 ~ 2,300)
System Power Input @ Heating (W)	/(/)
MCA: Min. circuit amps (A)	MOCP: Max. over current protection (A)
RLA: Rated load amps (A)	W: Fan motor rated output (W)

PIPING

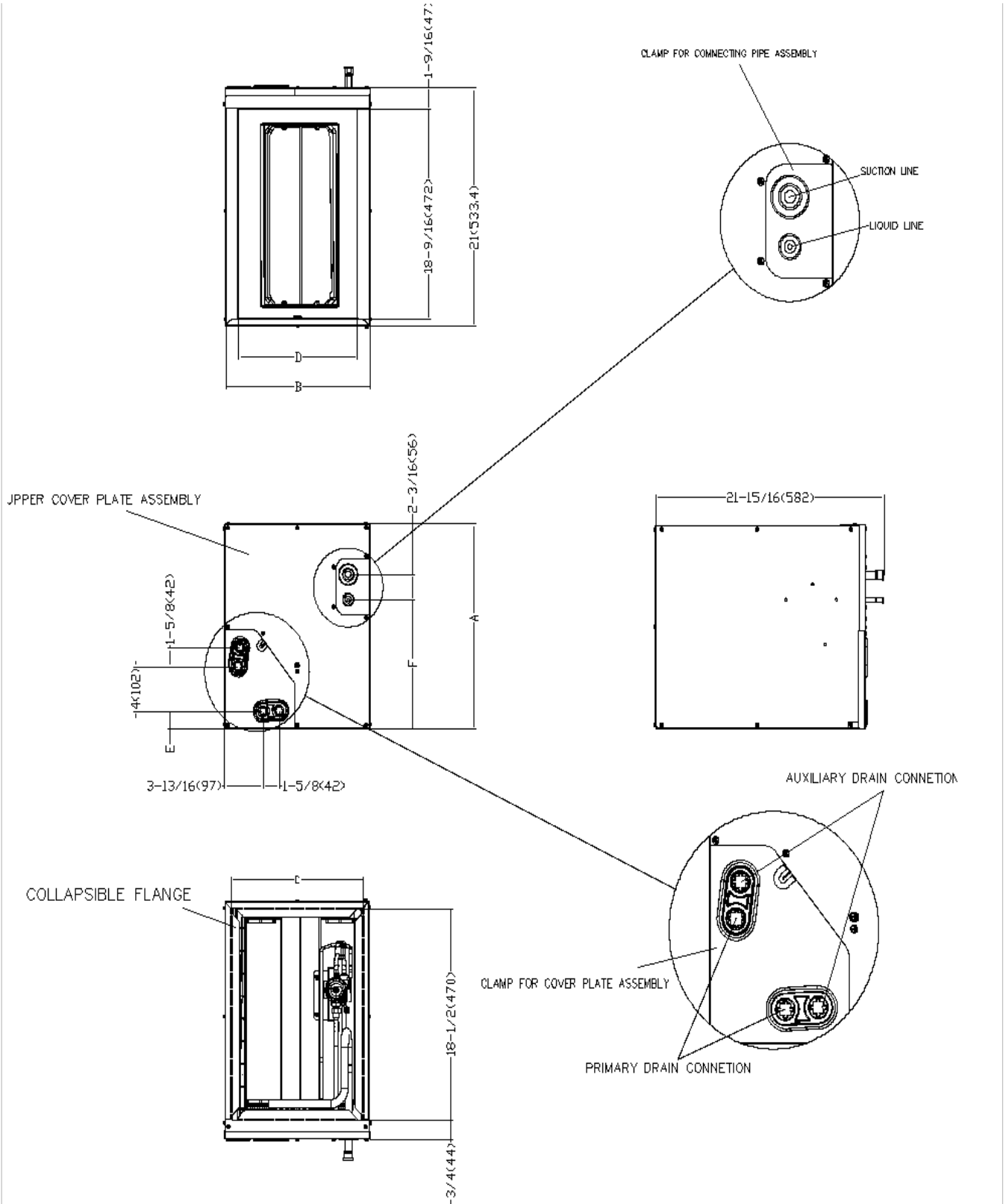
Throttle type(Indoor)	TXV
Throttle type(Outdoor)	/
Liquid Size	9.52mm(3/8in)
Gas Size	19mm(3/4in)
Max. Piping Length(ft/m)	98(30)

2. Rated Heating Conditions: Indoor: 70°F DB/60°F WB
 Outdoor: 17°F DB/15°F WB

3. Heating Conditions, Compressor Operating at Max. Frequency Indoor: 70°F DB/60°F WB
 Outdoor: 5°F DB/5°F WB

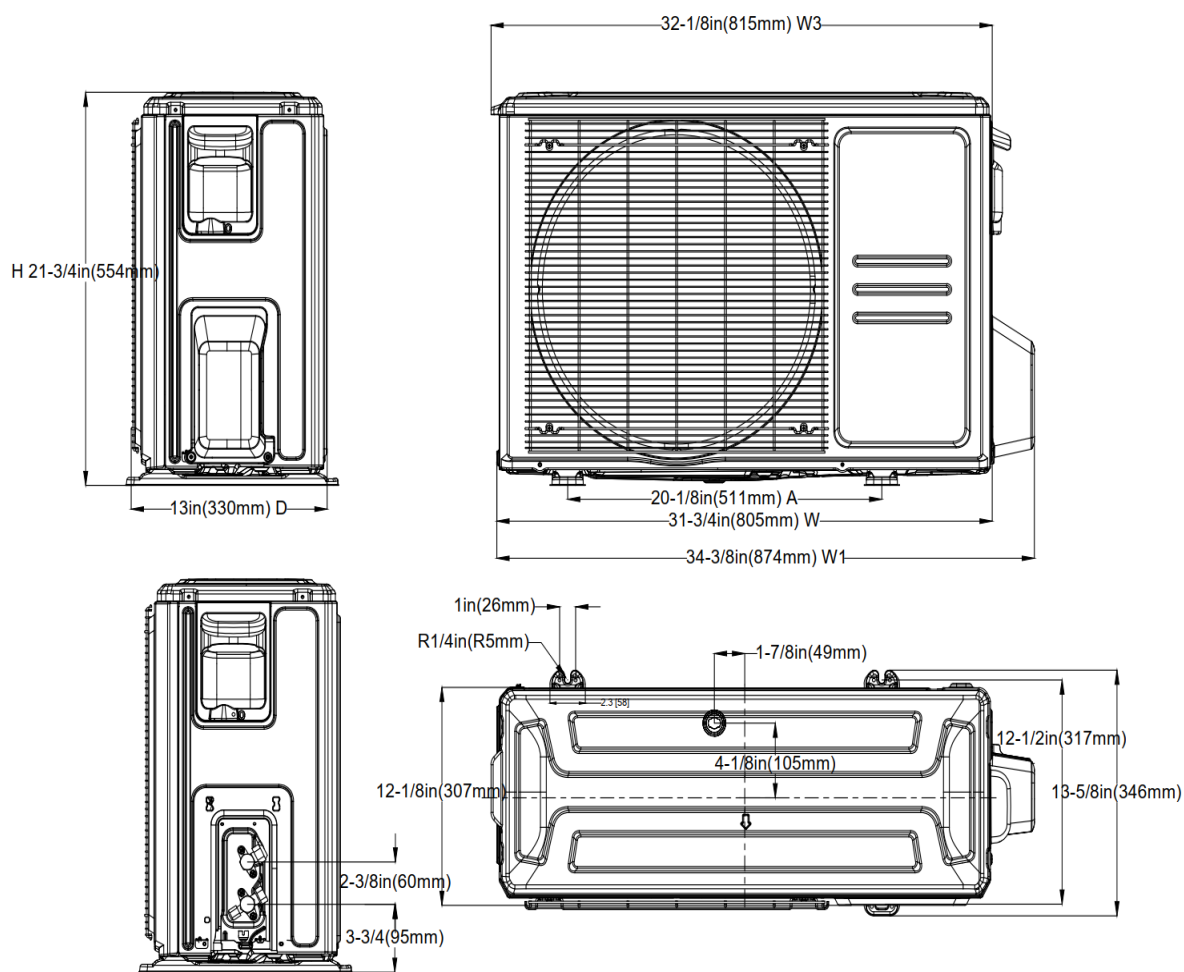
Max. Height Difference(ft/m)	66(20)
Max. Pre-charged Length(ft/m)	24.6(7.5)
Refrigerant Pre-charged Amount(oz/kg)	42.33(1.20)
Additional Charge of Refrigerant((oz/ft)/(g/m)	0.7(65)
Connection Method	Flared

Indoor Unit Dimension

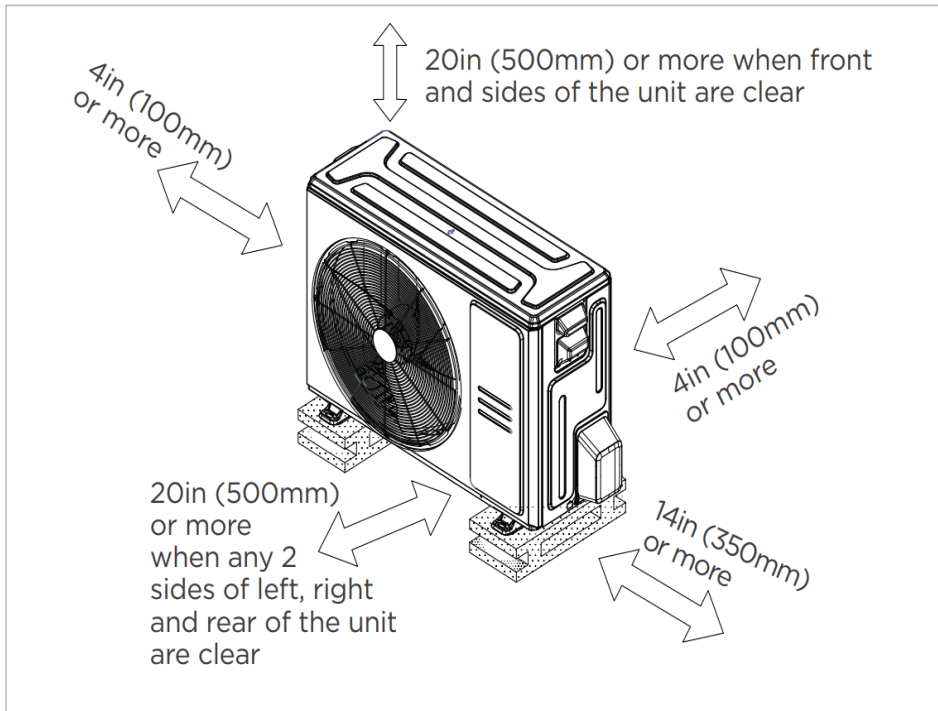


Dimensions / Model		MVBM-24B18T3N10		MVBM-24A18T3N10		MVBM-36A24T4N10		MVBM-36B24T4N10		MVBM-36C24T4N10		MVBM-60D28T6N10	
		inch	mm	inch	mm	inch	mm	inch	mm	inch	mm	inch	mm
A	Model Height	18	457	18	457	23-5/16	592	23-9/16	599	24	611	28	711
B	Model Width	17-1/2	445	14-1/2	368	14-1/2	368	17-1/2	445	21	534	24-1/2	622
C	Supply Air Opening Width	16-3/16	411	13-1/4	336	13-1/4	336	16-3/16	411	19-3/4	502	23-1/4	591
D	Return Air Opening Width	14-15/16	380	11-15/16	303	11-15/16	303	14-15/16	380	19-1/2	498	23-1/8	587
E	Condensate Drains Height	1-7/16	1-7/16	1-7/16	38	1-7/16	38	1-7/16	38	2-3/16	55	2-3/16	55
F	Liquid Line Height	11-3/8	290	11-3/8	290	17-15/16	455	16-3/8	417	17-1/2	445	21-7/16	545

Outdoor Unit Dimension



Installation Instruction For Outdoor Unit



Meets all spatial requirements shown in Installation Clearance Requirements above.

Features

- Multi-position installation: horizontal(left or right), vertical(up or down)
- Aluminum Coil
- R454B refrigerant sensor
- Easy Maintenance
- Multiple control options available:
 - Two way communication wired controller with built-in WiFi:120N(X6W)
 - Third-Party 24V Thermostat

