



Max. flow
40L/h (10.6GPH)



Sound level
16dB(A)@1M (3.3ft)



Max. discharge head
20 M (65.6ft)

CONDENSATE PUMP

- Capacitive sensor
- Variable flow rate
- Diagnostic LED
- Quick and simple installation
- Built-in operation tracking
- Ultra-quiet operation
- Up to 46 kw / 157,000 Btu/h

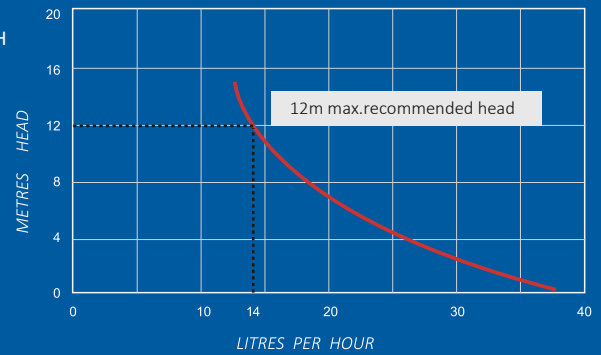
Thank you for purchasing our new condensate pump .

It uses a capacitive sensor to detect water instead of the traditional float and hall element. Automatic flow adjustment greatly reduces the function noise and extend the service life of the pump and electronic components, and with counter to record runing time and alarm.

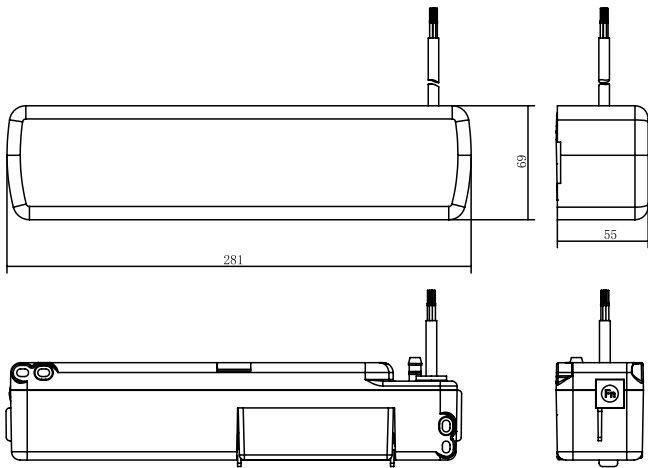
> TECHNICAL DATA

TYPICAL PERFORMANCE <

- Power supply: 100-240V AC 50/60Hz <4W
- Max. flow: 40L/h (10.6GPH), range from 20-40L/H (5.3-10.6GPH)
- Sound level: 16dB(A)@1M (3.3ft)
- Max. discharge head: 20 M (65.6ft)
- Max. suction lift: 2 M (6.6ft)
- Max. unit output: 46 kw / 157,000 Btu/h
- Safety switch: 3A Normally closed
- Max. water temperature: 40 °C
- Discharge tube: 6mmID
- Class: II appliance
- Protection: Fully potted, IP-45
- L×W×H: 281mm × 55mm × 69mm

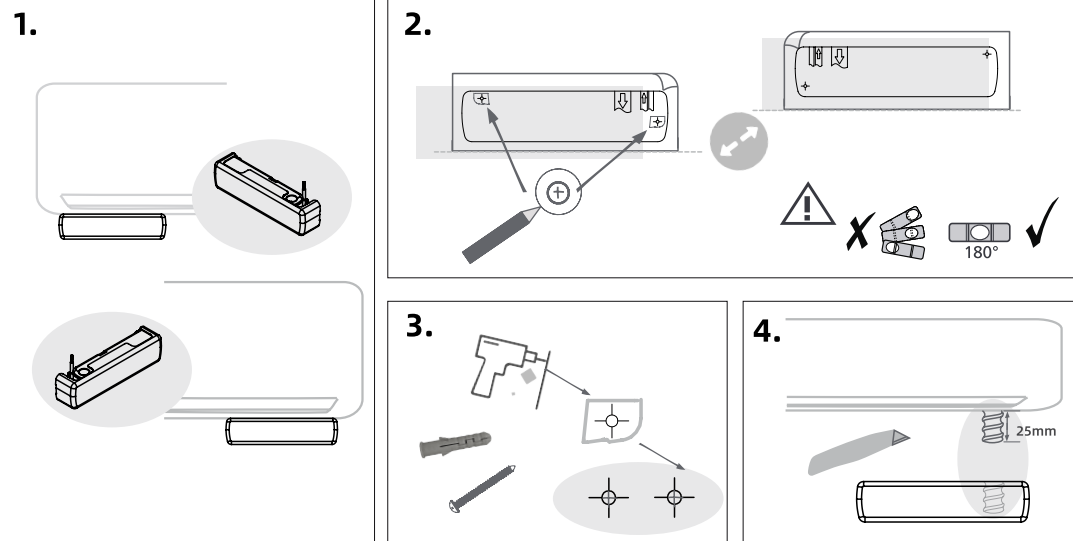


① IN THE BOX

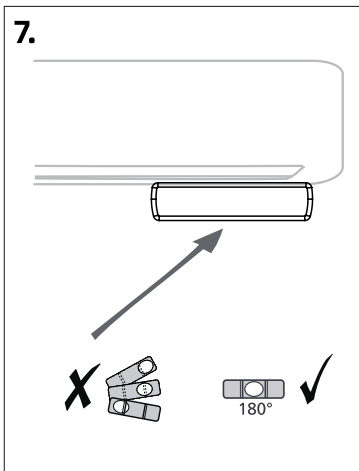
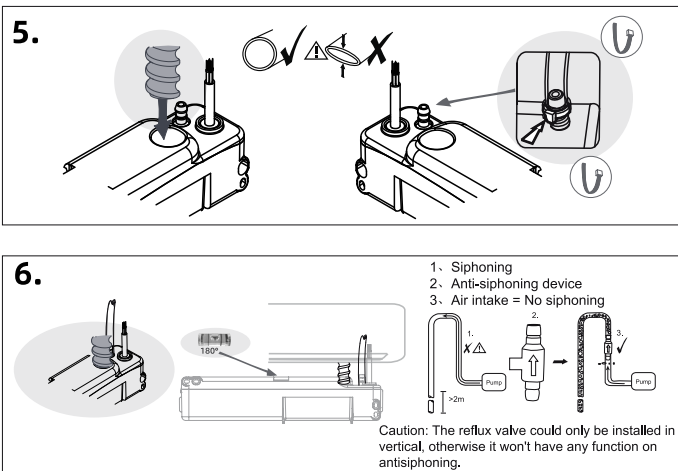


- 1A fuse × 1
- Installation screw × 2
- Expansion plug × 2
- Level gauge × 1
- Connection clamp × 1
- Nylon clamps 200mmx4mm × 2
- Drilling schematic template × 1
- Anti-siphon valve × 1

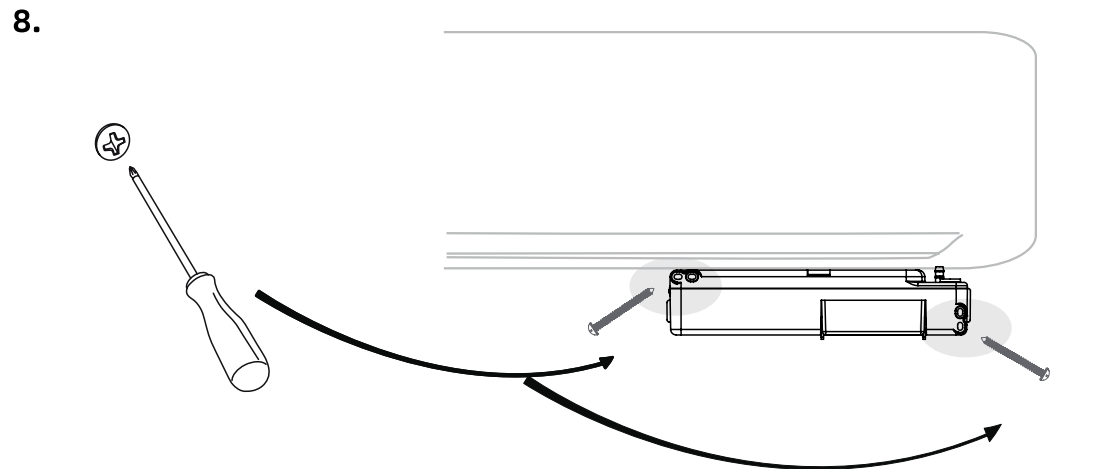
② INSTALLATION



② INSTALLATION



② INSTALLATION



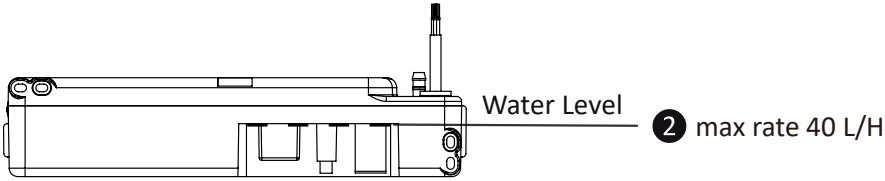
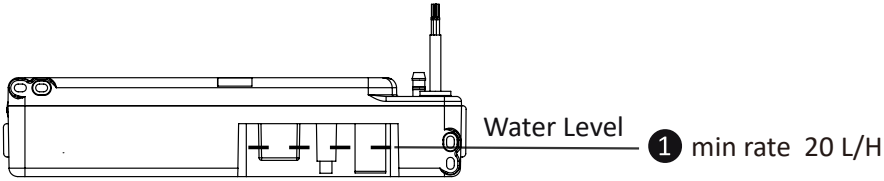
CONDENSATE PUMP

+1 (800) 865-5931 | www.alpinehomeair.com



③ FUNCTION

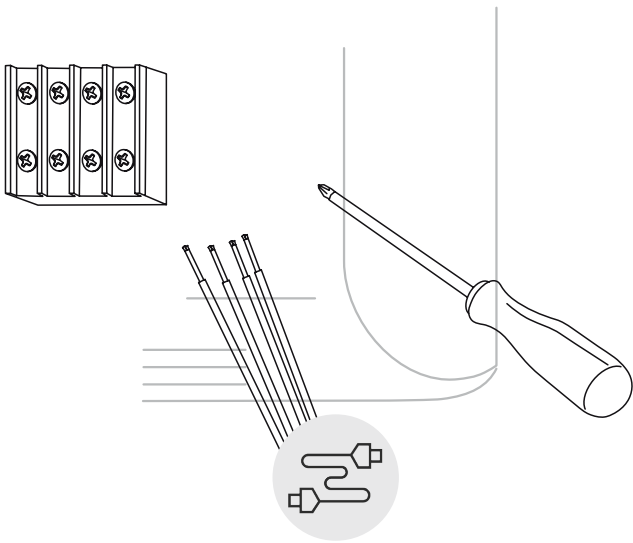
The pump's flow rate automatically adjusts with changes in water level.



Ⓢ for Manual drainage.

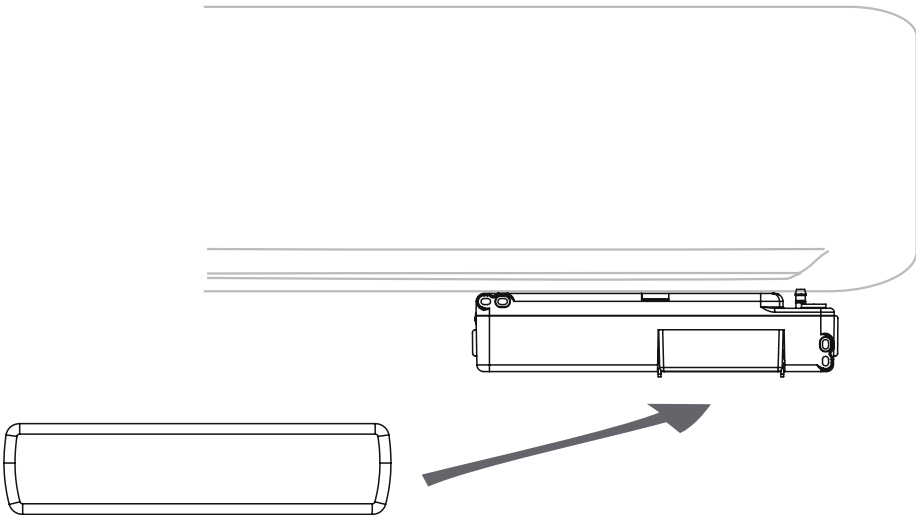
② INSTALLATION

9.



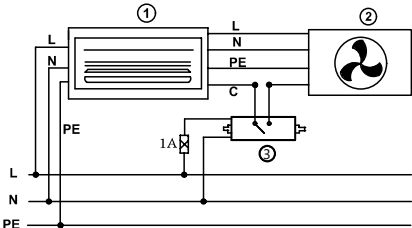
② INSTALLATION

10.



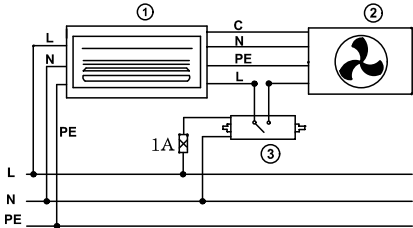
④ INSTALLATION

(1) Signal-line connection



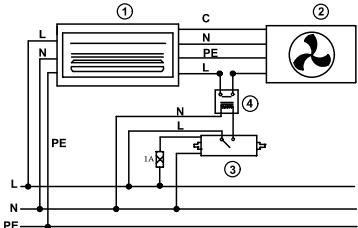
100-240V AC 50/60Hz

(2) Strong electric control connection (current <3A)



100-240V AC 50/60Hz

(3) Strong electric control connection (current >3A)




100-240V AC 50/60Hz

L: brown
N: blue
NC: black
C: black

- ① indoor unit
- ② outdoor unit
- ③ pump unit
- ④ contactor relay (normally open)


⑤ SAFETY INSTRUCTIONS


 Read instructions carefully before attempting to install, operate or service. pump installation, connections or any other service should be done by qualified engineers.

This pump has not been investigated for use in swimming pool or marine areas.

Do not install or use the pump if the supply cord or pump itself is broken.

The condensate pump has been evaluated for use with water only.

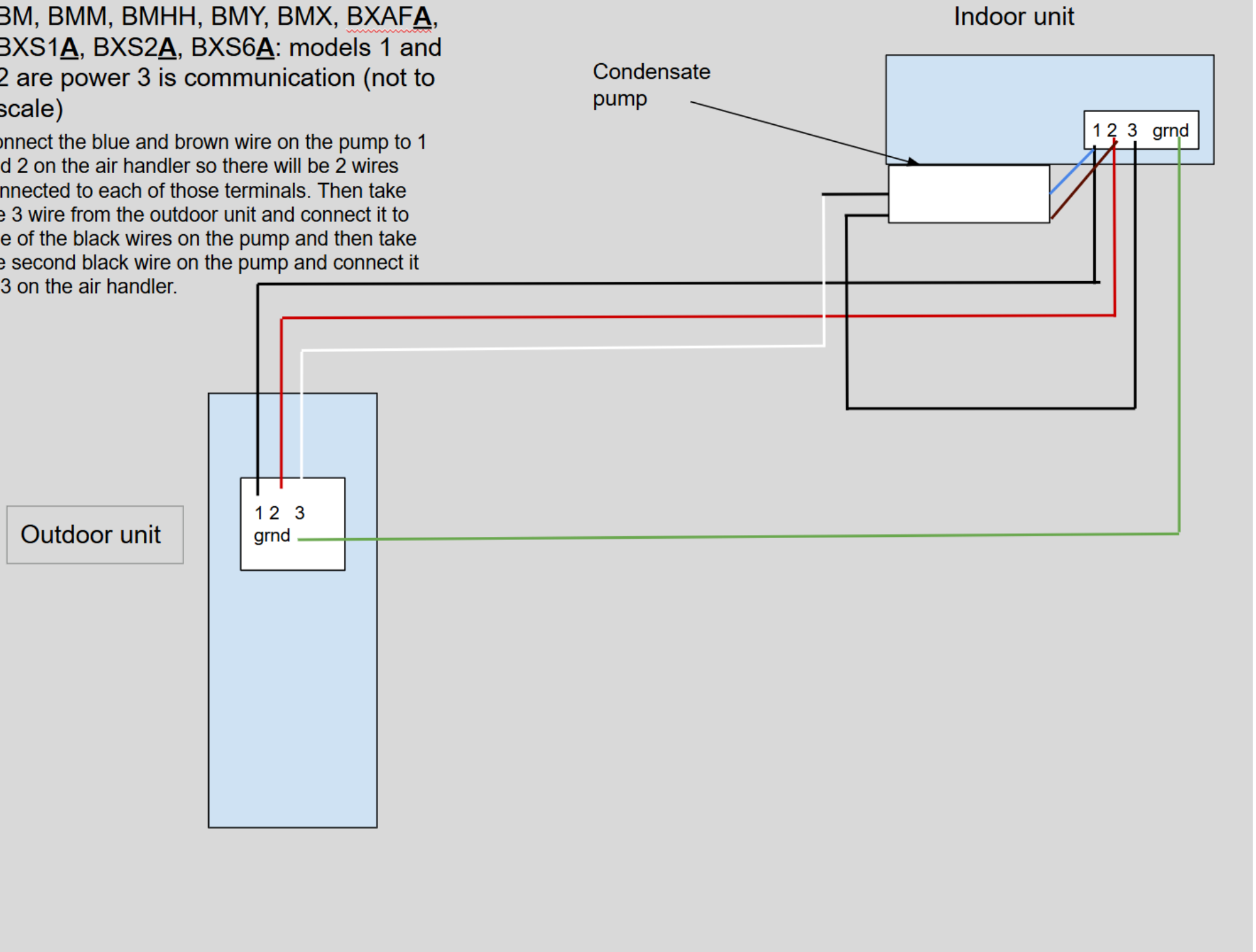
 Ensure the pump is disconnected from the mains supply before carrying out any adjustments or servicing

 Suitable for indoor use only

Supplemental Wiring Diagrams 1

BM, BMM, BMHH, BMY, BMX, BXAFA, BXS1A, BXS2A, BXS6A: models 1 and 2 are power 3 is communication (not to scale)

Connect the blue and brown wire on the pump to 1 and 2 on the air handler so there will be 2 wires connected to each of those terminals. Then take the 3 wire from the outdoor unit and connect it to one of the black wires on the pump and then take the second black wire on the pump and connect it to 3 on the air handler.

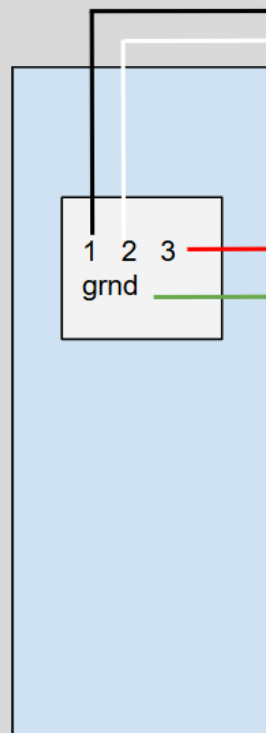


Supplemental Wiring Diagrams 2

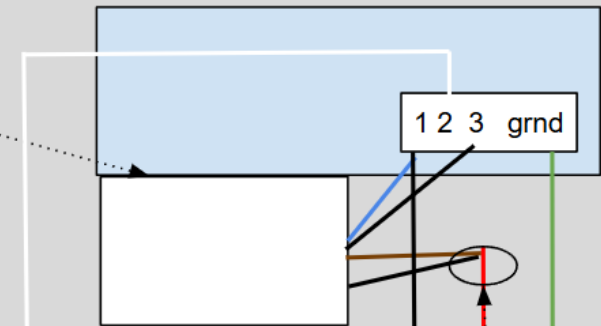
BMKH, BXS1Z, BXS2Z, BXS4Z, BXAFZ
models 1 and 3 are power 2 is
communication (not to scale)

Connect 1 on the outdoor unit to 1 on the indoor unit. Then also connect the blue wire from the pump to 1 on the indoor unit. Connect 2 on the outdoor unit to 2 on the indoor unit. Wire nut one black wire and the brown wire of the pump to the 3 wire coming from the outdoor unit. Then run the second black wire from the pump to the 3 terminal on the indoor unit. Connect ground on the outdoor unit to ground on the indoor unit.

Outdoor unit



Condensate
pump



Indoor unit

Wire nut one
black and the
brown wire
from the
pump to the 3
wire from the
outdoor unit.