

# **REMOTE CONTROLLER**

# **OWNER'S MANUAL**



## **IMPORTANT NOTE:**

Thank you for purchasing our air conditioner. Please read this manual carefully before operating your new air conditioning unit. Make sure to save this manual for future reference.



# Table of Contents

**Remote Controller Specifications .....02**

**Handling the Remote Controller .....03**

**Buttons and Functions .....04**

**Remote Screen Indicators .....05**

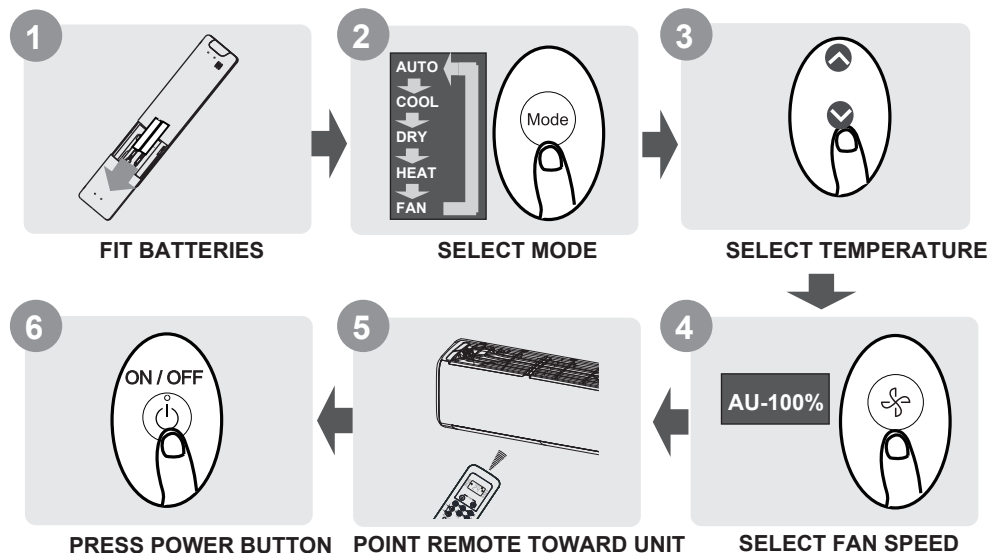
**How to Use Basic Functions .....07**

**How to Use Advanced Functions .....09**

## Remote Controller Specifications

Model	RG10L5(M2HS)/BGEFU1, RG10L6(M2HS)/BGEFU1
Rated Voltage	3.0V( Dry batteries R03/LR03×2)
Signal Receiving Range	8m
Environment	23~140°F(-5 ~ 60°C)

### Quick Start Guide



#### NOT SURE WHAT A FUNCTION DOES?

Refer to the **How to Use Basic Functions** and **How to Use Advanced Functions** sections of this manual for a detailed description of how to use your air conditioner.

#### SPECIAL NOTE

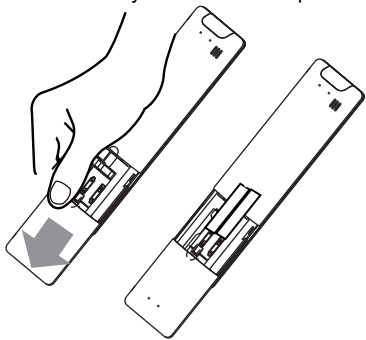
- Button designs on your unit may differ slightly from the example shown.
- If the indoor unit does not have a particular function, pressing that function's button on the remote control will have no effect.
- When there are wide differences between "Remote controller Manual" and "Owner's Manual" on function description, the description of "Owner's Manual" shall prevail.

# Handling the Remote Controller

## Inserting and Replacing Batteries

Your air conditioning unit may come with two batteries(some units). Put the batteries in the remote control before use.

1. Slide the back cover from the remote control downward, exposing the battery compartment.
2. Insert the batteries, paying attention to match up the (+) and (-) ends of the batteries with the symbols inside the battery compartment.
3. Slide the battery cover back into place.



## ! BATTERY NOTES

For optimum product performance:

- Do not mix old and new batteries, or batteries of different types.
- Do not leave batteries in the remote control if you don't plan on using the device for more than 2 months.



## BATTERY DISPOSAL

Do not dispose of batteries as unsorted municipal waste. Refer to local laws for proper disposal of batteries.

## TIPS FOR USING REMOTE CONTROL

- The remote control must be used within 8 meters of the unit.
- The unit will beep when remote signal is received.
- Curtains, other materials and direct sunlight can interfere with the infrared signal receiver.
- Remove batteries if the remote will not be used more than 2 months.

## NOTES FOR USING REMOTE CONTROL

The device could comply with the local national regulations.

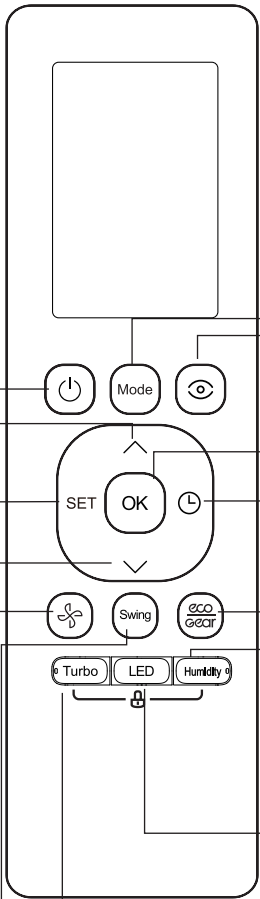
- In Canada, it should comply with CAN ICES-3(B)/NMB-3(B).
- In USA, this device complies with part 15 of the FCC Rules. Operation is subject to the following two conditions:
  - (1) This device may not cause harmful interference, and
  - (2) this device must accept any interference received, including interference that may cause undesired operation.

This equipment has been tested and found to comply with the limits for a Class B digital device, pursuant to part 15 of the FCC Rules. These limits are designed to provide reasonable protection against harmful interference in a residential installation. This equipment generates, uses and can radiate radio frequency energy and, if not installed and used in accordance with the instructions, may cause harmful interference to radio communications. However, there is no guarantee that interference will not occur in a particular installation. If this equipment does cause harmful interference to radio or television reception, which can be determined by turning the equipment off and on, the user is encouraged to try to correct the interference by one or more of the following measures:

- Reorient or relocate the receiving antenna.
- Increase the separation between the equipment and receiver.
- Connect the equipment into an outlet on a circuit different from that to which the receiver is connected.
- Consult the dealer or an experienced radio/TV technician for help.
- Changes or modifications not approved by the party responsible for compliance could void user's authority to operate the equipment.

## Buttons and Functions

Before you begin using your new air conditioner, make sure to familiarize yourself with its remote control. The following is a brief introduction to the remote control itself. For instructions on how to operate your air conditioner, refer to the **How to Use Basic Functions** section of this manual.



**ON/OFF**  
Turns the unit on or off.

**TEMP ^**  
Increases temperature in 0.5°C (1°F) increments. Max. temperature is 30°C (86°F).  
**Note:** Press together ∨ & ^ buttons at the same time for 3 seconds will alternate the temperature display between the °C & °F.

**SET**  
Scrolls through operation functions as follows:  
Breeze away\* (🌀) → Active clean\* (🧼) → Fresh/UV-C lamp\* (💡) → Sleep\* (😴) → Follow Me (👤) → AP mode\* (📶)  
The selected symbol will flash on the display area, press the OK button to confirm.  
[\*] Only available for the unit with this feature

**TEMP ∨**  
Decreases temperature in 0.5°C (1°F) increments. Min. temperature is 16°C (60°F).

**FAN SPEED**  
Selects fan speeds in the following order: AU → 20% → 40% → 60% → 80% → 100%.  
Press the TEMP ^ or ∨ button to increase/decrease the fan speed in 1% increments.

**SWING**  
Starts and stops the horizontal louver movement. Hold down for 2 seconds to initiate vertical louver auto swing feature.

**MODE**  
Scrolls through operation modes as follows: **AUTO** → **COOL** → **DRY** → **HEAT** → **FAN**  
**NOTE:** HEAT mode is not supported by the cooling only appliance.

**Eco Intelligent eye**  
Used to detect the people activities in the room to save energy.

**OK**  
Used to confirm the selected functions.

**TIMER**  
Set timer to turn unit on or off

**ECO/GEAR**  
Press this button to enter the energy efficient mode in a sequence of following:  
ECO → GEAR(75%) → GEAR(50%) → Previous setting mode.

**HUMIDITY**  
Adjust the room humidity during Dry operation in a range of 35%~85%. Press this button to increase the humidity in 5% increments.  
**NOTE:** After setting, the humidity settings will display on the screen.

**LED**  
Turns indoor unit's LED display and air conditioner buzzer on and off, which create a comfortable and quiet environment.

**TURBO**  
Enables unit to reach present temperature in shortest possible time. Keep pressing this button more than 5 seconds in heating mode to active Super heat operation. To stop this feature, keep pressing this button more than 3 seconds.

Model:RG10L5(M2HS)/BGEFU1

**ON/OFF**  
Turns the unit on or off.

**TEMP ^**  
Increases temperature in 0.5°C (1°F) increments. Max. temperature is 30°C (86°F).  
Note: Press together **^** & **SET** buttons at the same time for 3 seconds will alternate the temperature display between the °C & °F.

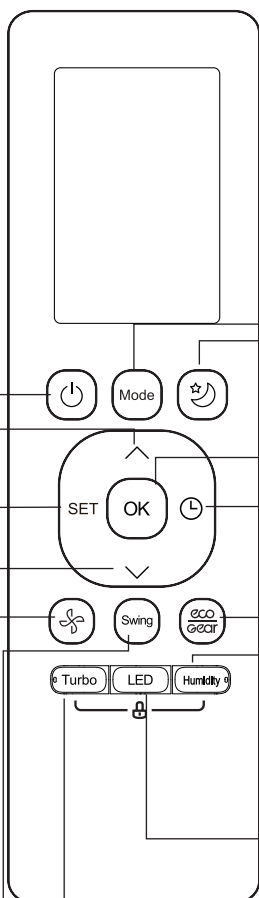
**SET**  
Scrolls through operation functions as follows:  
Breeze away\* (🌀) → Active clean (🧼) → Fresh/UV-C lamp\* (💡) → Follow Me (👤) → AP mode\* (📶)  
The selected symbol will flash on the display area, press the OK button to confirm.

[\*] Only available for the unit with this feature

**TEMP v**  
Decreases temperature in 0.5°C (1°F) increments. Min. temperature is 16°C (60°F).

**FAN SPEED**  
Selects fan speeds in the following order: AU → 20% → 40% → 60% → 80% → 100%.  
Press the **TEMP ^** or **TEMP v** button to increase/decrease the fan speed in 1% increments.

**SWING**  
Starts and stops the horizontal louver movement. Hold down for 2 seconds to initiate vertical louver auto swing feature.



**MODE**  
Scrolls through operation modes as follows: **AUTO** → **COOL** → **DRY** → **HEAT** → **FAN**  
Note: HEAT mode is not supported by the cooling only appliance.

**SLEEP**  
Saves energy during sleeping hours.

**OK**  
Used to confirm the selected functions.

**TIMER**  
Set timer to turn unit on or off

**ECO/GEAR**  
Press this button to enter the energy efficient mode in a sequence of following:  
ECO → GEAR(75%) → GEAR(50%) → Previous setting mode

**HUMIDITY**  
Adjust the room humidity during Dry operation in a range of 35%~85%. Press this button to increase the humidity in 5% increments.  
**NOTE:** After setting, the humidity settings will display on the screen.

**LED**  
Turns indoor unit's LED display and air conditioner buzzer on and off, which create a comfortable and quiet environment.

**Turbo**  
Enables unit to reach present temperature in shortest possible time. Keep pressing this button more than 5 seconds in heating mode to active Super heat operation. To stop this feature, keep pressing this button more than 3 seconds.

Model:RG10L6(M2HS)/BGEFU1

## Remote Screen Indicators

Information are displayed when the remote controller is power up.

- |  |  |  |   |
|--|--|--|---|
|  | Wind flow follow people (some units)     |  | Active clean feature display                  |
|  | Breeze Away display                      |  | Fresh/UV-C lamp feature display               |
|  | Not applicable for this unit             |  | Sleep mode display                            |
|  | Not applicable for this unit             |  | Follow me feature display                     |
|  | ECO intelligent eye display (some units) |  | Wireless control feature display (some units) |
|  |  |  | Low battery detection display (If flashes)    |

**Transmission Indicator**  
Lights up when remote sends signal to indoor unit

**ON**  
**TIMER ON display**

**OFF**  
**TIMER OFF display**

**Silence feature display**

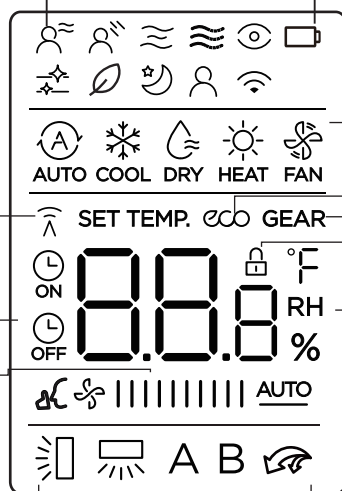
**FAN SPEED display**

Displays selected fan speed:

Silence		1%
		2%-20%
LOW		21%-40%
MED		41%-60%
		61%-80%
HIGH		81%-100%

AUTO **AUTO**

This fan speed can not be adjusted in AUTO or DRY mode.



**MODE display**

Displays the current mode, including:

**AUTO** **COOL** **DRY** **HEAT** **FAN**

**ECO display**

Displays when ECO feature is activated

**GEAR display**

Displays when GEAR feature is activated

**LOCK display**

Displays when LOCK feature is activated.

**Temperature/Timer/Fan speed display**

Displays the set temperature by default, or fan speed or timer setting when using TIMER ON/OFF functions.

- Temperature range: 60-86°F/16-30°C

- Timer setting range: 0-24 hours

- Fan speed setting range: AU -100%

- Humidity setting range: 35% -85%

This display is blank when operating in FAN mode.

**Horizontal louver swing display (some units)**



**Vertical louver auto swing display**



**Turbo mode display**

**A**

Not applicable for this unit

**B**

### NOTE:

All indicators shown in the figure are for the purpose of clear presentation. But during the actual operation, only the relative function signs are shown on the display window.

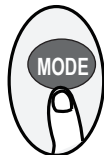


## How to Use Basic Functions

**! ATTENTION** Before operation, please ensure the unit is plugged in and power is available.

### AUTO Mode

Select AUTO mode



Set your desired temperature



Turn on the air conditioner

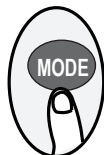


#### NOTE:

1. In AUTO mode, the unit will automatically select the COOL, FAN, or HEAT function based on the set temperature.
2. In AUTO mode, fan speed can not be set.

### COOL or HEAT Mode

Select COOL/HEAT mode



Set the temperature



Set the fan speed

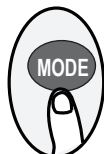


Turn on the air conditioner



### DRY Mode

Select DRY mode



Set your desired temperature



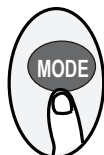
Turn on the air conditioner



**NOTE:** In DRY mode, fan speed can not be set since it has already been automatically controlled.

### FAN Mode

Select FAN mode



Set the fan speed



Turn on the air conditioner



**Note:** In FAN mode, you can't set the temperature. As a result, no temperature displays in remote screen.

## Setting the TIMER

**TIMER ON/OFF** - Set the amount of time after which the unit will automatically turn on/off.

### TIMER ON setting

Press TIMER button to initiate the ON time sequence.



Press Temp. up or down button for multiple times to set the desired time to turn on the unit.



Point remote to unit and wait 1sec, the TIMER ON will be activated.



### TIMER OFF setting

Press TIMER button to initiate the OFF time sequence.



Press Temp. up or down button for multiple times to set the desired time to turn off the unit.



Point remote to unit and wait 1sec, the TIMER OFF will be activated.

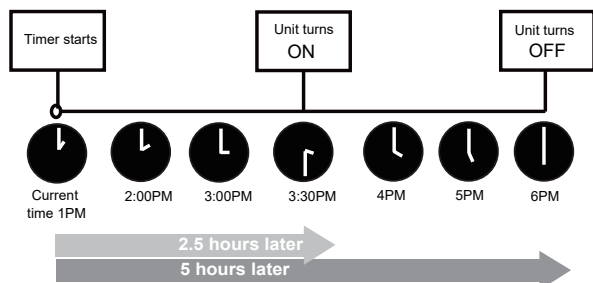
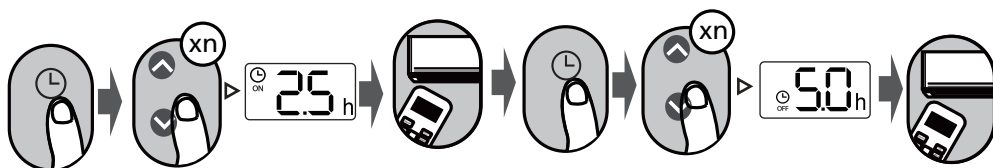


#### NOTE:

1. When setting the TIMER ON or TIMER OFF, the time will increase by 30 minutes increments with each press, up to 10 hours. After 10 hours and up to 24, it will increase in 1 hour increments. (For example, press 5 times to get 2.5h, and press 10 times to get 5h.) The timer will revert to 0.0 after 24.
2. Cancel either function by setting its timer to 0.0h.

### TIMER ON & OFF setting(example)

Keep in mind that the time periods you set for both functions refer to hours after the current time.

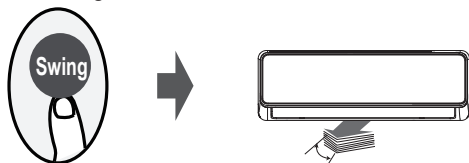


Example: If current timer is 1:00PM, to set the timer as above steps, the unit will turn on 2.5h later (3:30PM) and turn off at 6:00PM.

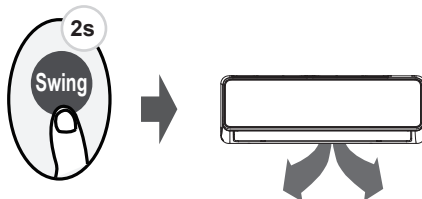
# How to Use Advanced Functions

## Swing function

Press Swing button

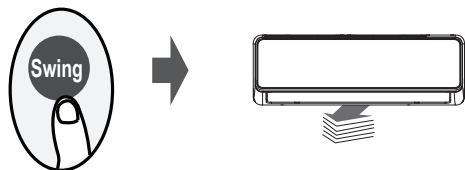


The horizontal louver will swing up and down automatically when pressing Swing button. Press again to make it stop.



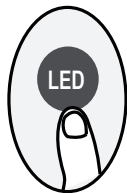
Keep pressing this button more than 2 seconds, the vertical louver swing function is activated. (Model dependent)

## Airflow direction

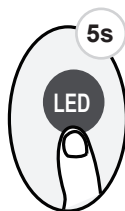


If continue to press the SWING button, five different airflow directions can be set. The louver can be move at a certain range each time you press the button. Press the button until the direction you prefer is reached(some units only).

## LED DISPLAY



Press this button to turn on and turn off the display on the indoor unit.



Press this button more than 5 seconds(some units)

Keep pressing this button more than 5 seconds, the indoor unit will display the actual room temperature. Press more than 5 seconds again will revert back to display the setting temperature.

## ECO/GEAR function



Press this button to enter the energy efficient mode in a sequence of following:

ECO → GEAR(75%) → GEAR(50%) → Previous setting mode → ECO.....

Note: This function is only available under COOL mode.

### ECO operation:

Under cooling mode, press this button, the remote controller will adjust the temperature automatically to 24°C/75°F, fan speed of Auto to save energy (only when the set temperature is less than 24°C/75°F). If the set temperature is above 24°C/75°F, press the ECO button, the fan speed will change to Auto, the set temperature will remain unchanged.

#### NOTE:

Pressing the ECO button, or modifying the mode or adjusting the set temperature to less than 24°C/75°F will stop ECO operation.

Under ECO operation, the set temperature should be 24°C/75°F or above, it may result in insufficient cooling. If you feel uncomfortable, just press the ECO button again to stop it.

### GEAR operation:

Press the ECO/GEAR button to enter the GEAR operation as following:

75%(up to 75% electrical energy consumption)



50%(up to 50% electrical energy consumption)



Previous setting mode.

## ECO Intelligent Eye Function

Press this button



For model RG10L5(M2HS)/BGEFU1:

Under ECO Intelligent eye mode, with the built-in infrared sensor, the unit can detect the people's activities in the room. In Cooling and heating mode, when you are away for 30 minutes, the unit automatically lowers the frequency to save energy (for inverter models only). And the unit will automatically resume operation if sensing human activity again.

## Sleep Function

Press Sleep button



For model RG10L6(M2HS)/BGEFU1:

The Sleep function is used to decrease energy use while you sleep (and don't need the same temperature settings to stay comfortable). This function can only be activated via remote control.

For details, see "Sleep operation" in OWNER'S MANUAL of the machine.

**Note:** The Sleep function is not available in FAN or DRY mode.

## Silence function



Keep pressing Fan button for more than 2 seconds to activate/disable Silence function (Only available for the units with this feature).

Due to low frequency operation of compressor, it may result in insufficient cooling and heating capacity. Press ON/OFF, Mode, Sleep, Turbo or Clean button while operating will cancel silence function.

## FP function

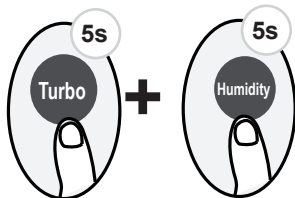
Press this button 2 times during one second under HEAT Mode with setting temperature of 16°C/60°F.



The unit will operate at high fan speed (while compressor on) with temperature automatically set to 8°C/46°F.

**Note:** This function is for heat pump air conditioner only. Press On/Off, Sleep, Mode, Fan and Temp. button while operating will cancel this function.

## LOCK function



Press together **Turbo** button and **Humidity** button at the same time more than 5 seconds to activate Lock function. All buttons will not response except pressing these two buttons for two seconds again to disable locking.

## Turbo Function

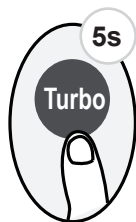
Press Turbo button



When you select Turbo feature in COOL mode, the unit will blow cool air with strongest wind setting to jump-start the cooling process.

When you select Turbo feature in HEAT mode, the unit will blow heat air with strongest wind setting to jump-start the heating process.

For units with Electric heat elements, the Electric HEATER will activate and jump-start the heating process.



### Super heat function

Long press Turbo button for 5 seconds in Heating/Auto heating mode to initiate super heat function. To stop this feature, long press this button for 3 seconds. This function is mainly used to improve the heating speed of the unit at low temperature.

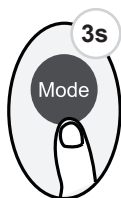
Under super heat mode, the louver will open to its maximum angle to enable unit to reach preset temperature in shortest possible time.

Note: The anti-cold air feature is disabled 5 minutes later after the compressor starts, it may result in low air outlet temperature. You should choose whether to enable this function according to your need.

#### NOTE:

- If the Super heat function is activated, “ **On** ” displays for 3 seconds on the indoor unit display window.
- If the Super heat function is stopped, “ **OF** ” displays for 3 seconds on the indoor unit display window.
- Change the mode or turn the unit off to stop the super heating operation.

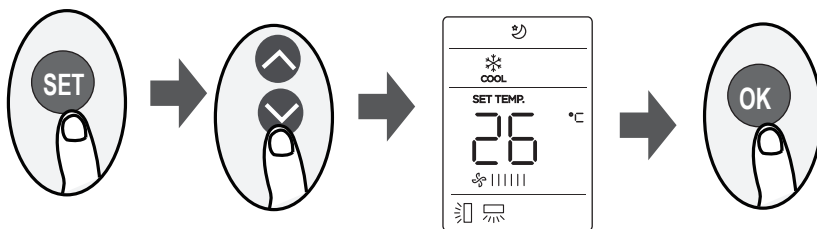
## Lifting panel function



For model RG10L6(M2HS)/BGEFU1:

Press together **Mode** button and “**∨**” button at the same time more than 3 seconds to activate this function, and the remote controller displays “F2”. When setting the panel status, press the “**^**” or “**∨**” buttons of the remote controller to control the rise or fall of the grille, and press any other button to exit the setting.

## SET function



- Press the SET button to enter the function setting, then press SET button or TEMP▼ or TEMP▲ button to select the desired function. The selected symbol will flash on the display area, press the OK button to confirm.
- To cancel the selected function, just perform the same procedures as above.
- Press the SET button to scroll through operation functions as follows:  
Breeze away ( 〰 ) → Active clean ( 洗 ) → Fresh/UV-C lamp\* ( 灯 ) → Sleep ( 睡 ) → Follow Me ( 跟 ) → AP mode\* ( 网 )  
[\*]: Only available for the units with this feature. If your remote controller has Sleep button, you can not use the SET button to select the sleep feature.

### Breeze Away function :

This feature avoids direct air flow blowing on the body and makes you feel indulging in silky coolness.

**Note:** This feature is available under cool, Fan and Dry mode only.

### Active clean function :

The Active Clean Technology washes away dust, mold, and grease that may cause odors when it adheres to the heat exchanger by automatically freezing and then rapidly thawing the frost.

When this function is turned on, the indoor unit display window appears "CL", after 20 to 45 minutes, the unit will turn off automatically and cancel CLEAN function.

### FRESH/UV-C lamp function:

When this function is selected, the ionizer or UV-C lamp(model dependent) will be activated. If has both features, these two features will be activated at the same time. This function will help to purify the air in the room.

### Sleep function(For model RG10L5(M2HS)/BGEFU1):

The SLEEP function is used to decrease energy usage while you sleep (and don't need the same temperature settings to stay comfortable). This function can only be activated via remote control.

For the detail, see "sleep operation" in "Owner's Manual".

**Note:** The SLEEP function is not available in FAN or DRY mode.

### Follow me function :

The FOLLOW ME function enables the remote control to measure the temperature at its current location and send this signal to the air conditioner every 3 minutes interval. When using AUTO, COOL or HEAT modes, measuring ambient temperature from the remote control(instead of from the indoor unit itself) will enable the air conditioner to optimize the temperature around you and ensure maximum comfort.

#### **Note:**

Press the SET button to select Follow Me function, then press OK button to confirm. Pressing the OK button for 3 seconds will start/stop memory feature of Follow Me function.

- If the memory feature is activated, " On " displays for 3 seconds on the screen.
- If the memory feature is stopped, " OF " displays for 3 seconds on the screen.
- While the memory feature is activated, press the ON/OFF button, shift the mode or power failure will not cancel the Follow Me function.

### AP function :

Choose AP mode to do wireless network configuration. For some units, it doesn't work by pressing the SET button. To enter the AP mode, continuously press the LED button seven times in 10 seconds.

# **Supplier's Declaration of Conformity**

## **47 CFR § 2.1077 Compliance Information**

**Unique Identifier:** (BLUERIDGE, RG10L5(M2HS)/BGEFU1)

### **Responsible Party – U.S. Contact Information**

EVEREST COMPANIES, LLC  
C/O: CRAIG P THOMAS, 2902 MCFARLAND  
RD STE 400 ROCKFORD, 61107, ILLINOIS USA

Telephone number or internet contact information: 800 865 5931 x333

### **FCC Compliance Statement**

This device complies with Part 15 of the FCC Rules. Operation is subject to the following two conditions:  
(1) This device may not cause harmful interference, and (2) this device must accept any interference received, including interference that may cause undesired operation.

The design and specifications are subject to change without prior notice for product improvement. Consult with the sales agency or manufacturer for details.



**AlpineHomeAir.com**

**CR333-RG10L5(M2HS)**

**16122000A79125**