

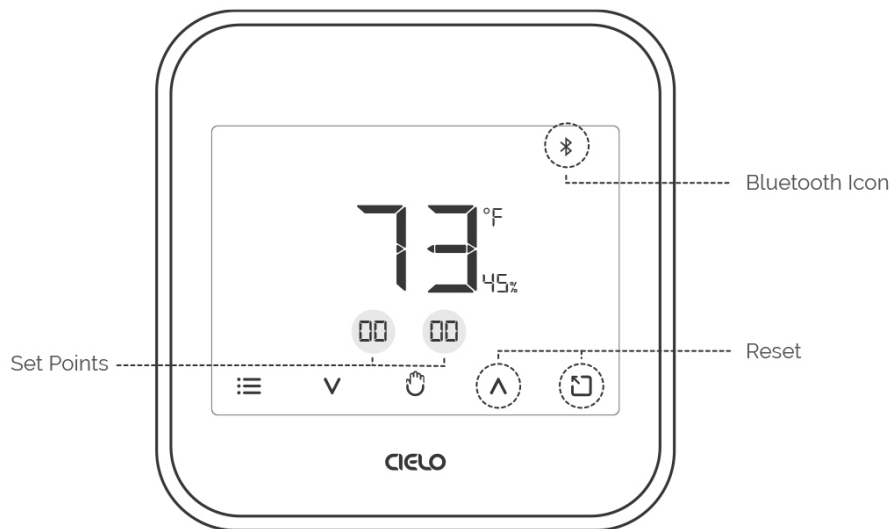
Detailed User Manual - Cielo Smart Thermostat Eco



Registering Your Thermostat via the Cielo Home App

Prior to Registration

First, check that your thermostat setpoints are 00. If not, press and hold the Temperature Up and Presets buttons simultaneously until all the buttons vanish. The Bluetooth icon will start blinking, and you can begin the registration process.



Step 1: Prior to App Installation

For your phone:

- Make sure your smartphone's Bluetooth is turned ON.
- Make sure your smartphone's Wi-Fi is turned ON.
- Make sure your smartphone has internet access.

For your Wi-Fi router:

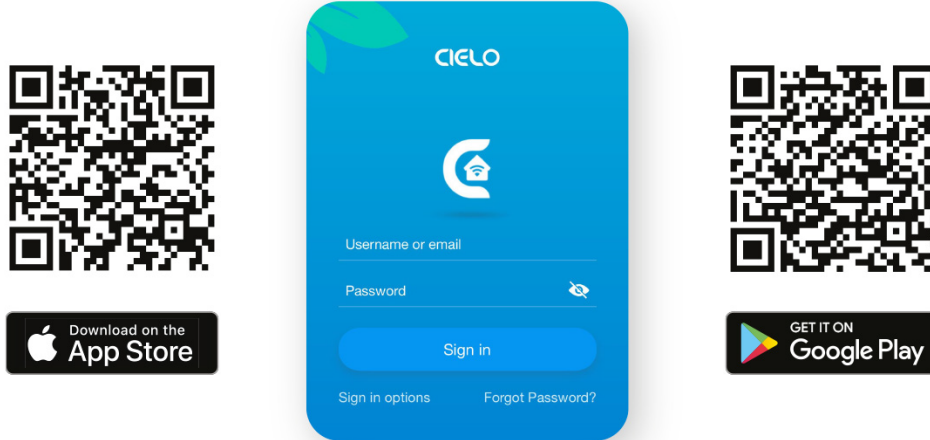
- Make sure you have a working internet connection on your Wi-Fi router.
- Make sure there is no proxy server or authentication server configured on your internet connection.
- Make sure there is no captive portal on your Wi-Fi router.

Important: Make sure IP isolation or client isolation is turned OFF on your Wi-Fi router.

Step 2: App Installation & Registration iOS / Android

Install the 'Cielo Home' app from the App Store/Play Store. Search for the Cielo Home app or scan the QR code provided below.

Log in to the app if you already have an account; otherwise, create one using the sign-up option.



Note for iOS users:

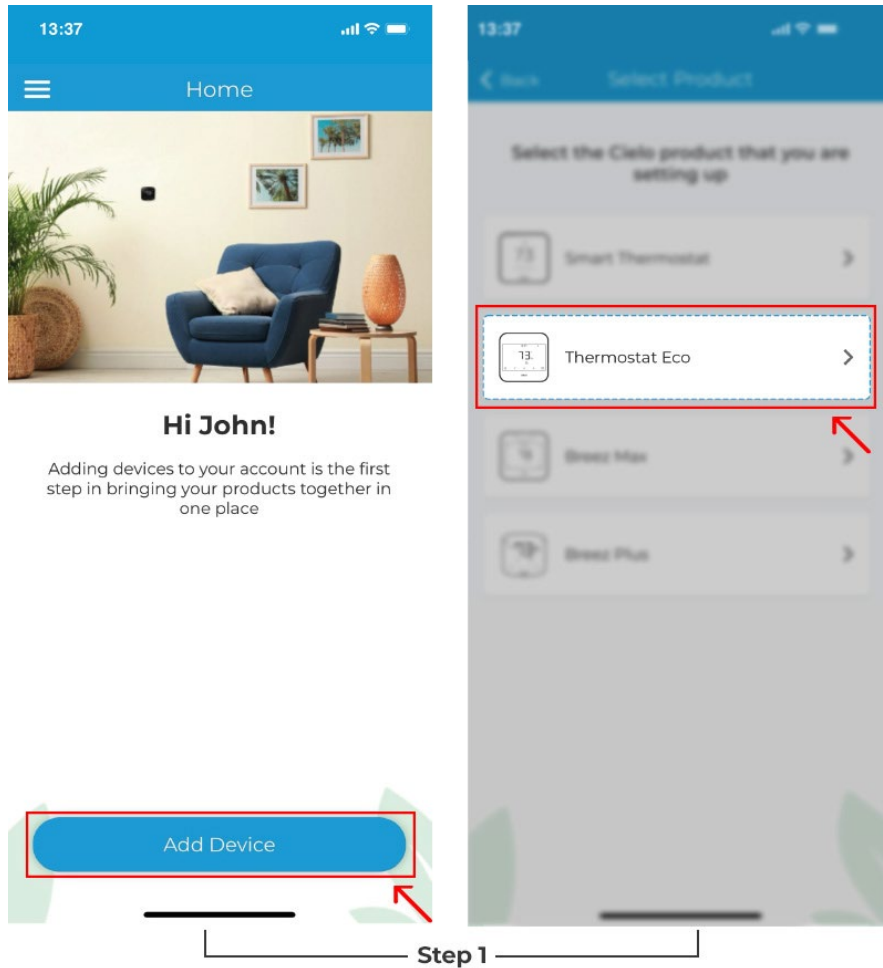
For iOS 13.0 & above, location permission is required to complete the registration process. You may disable it later.

Note for Android users:

For Android OS 8.1 & above, location permission is required to complete the registration process. You may disable it later.

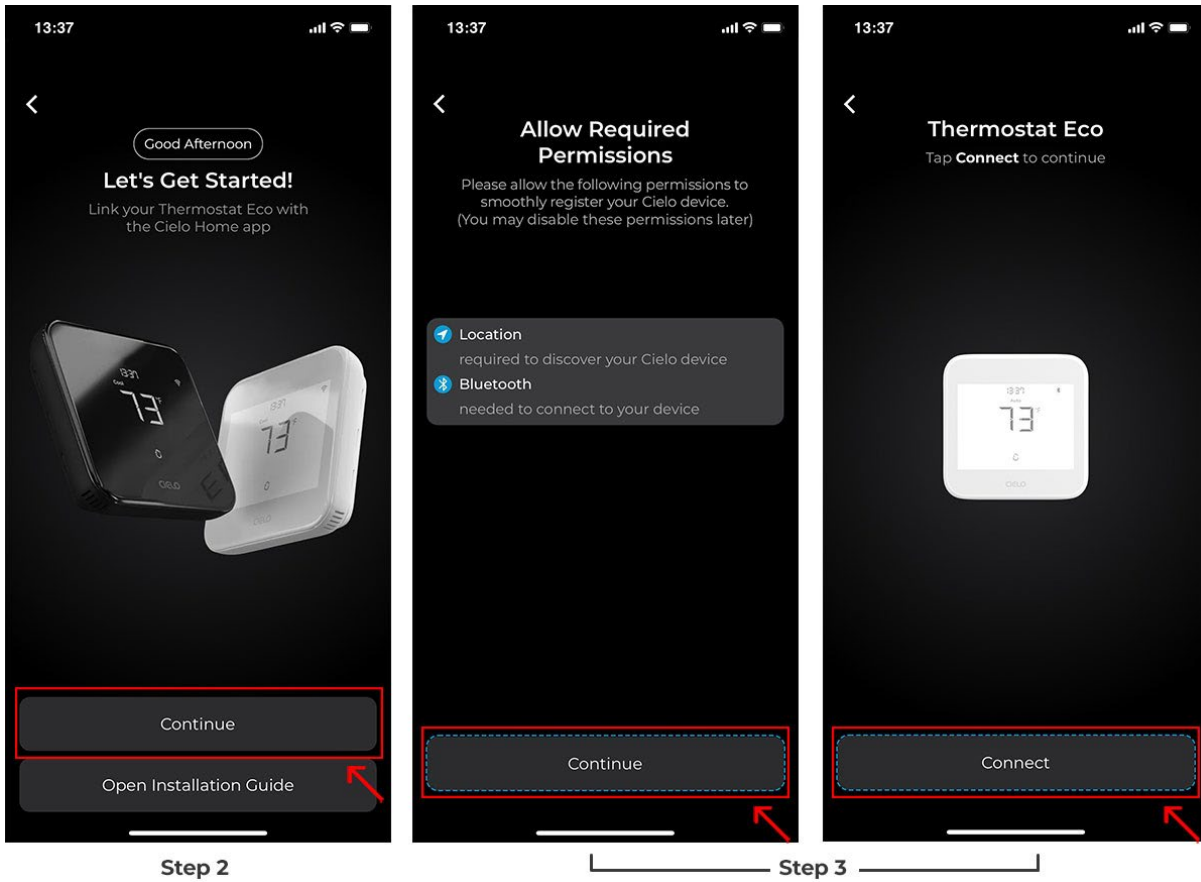
Step 3: Device Registration

Step 1: Open the Cielo Home app, tap 'Add Device' on the home screen, and select Thermostat Eco from the list of devices.



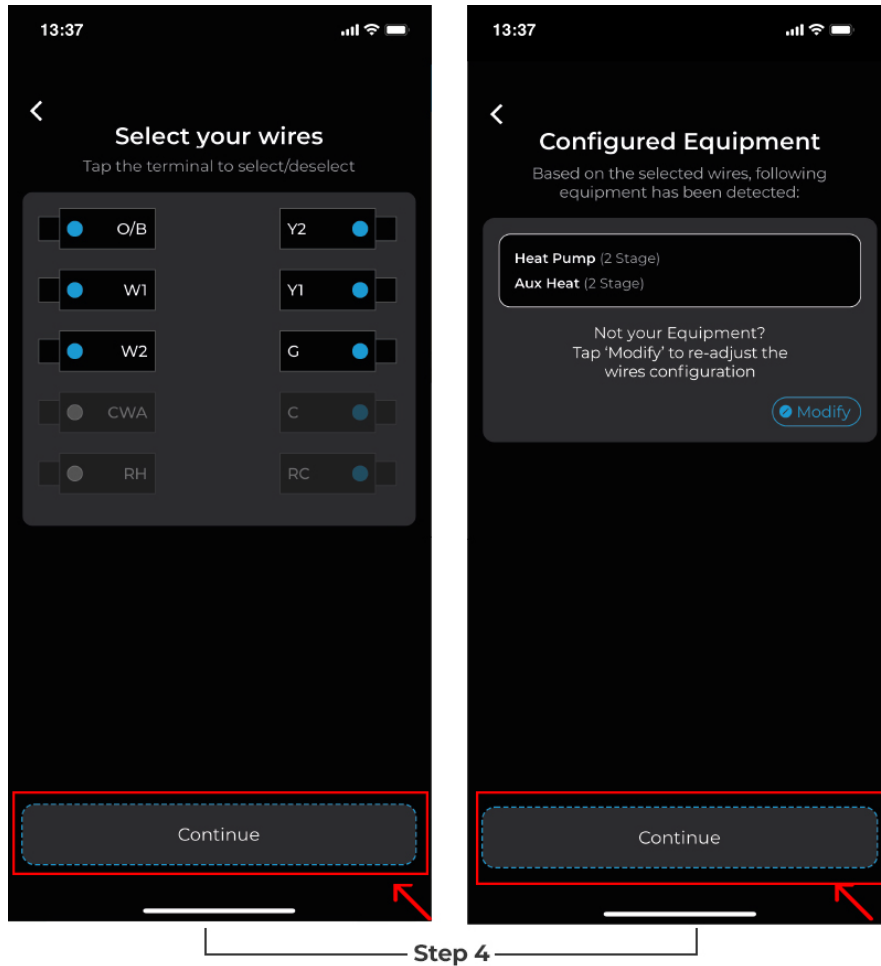
Step 2: Tap on 'Continue' to start the registration process.

Step 3: Please give necessary permissions and tap 'Continue'; your thermostat will appear on the screen. Tap on 'Connect' to move to the next step.



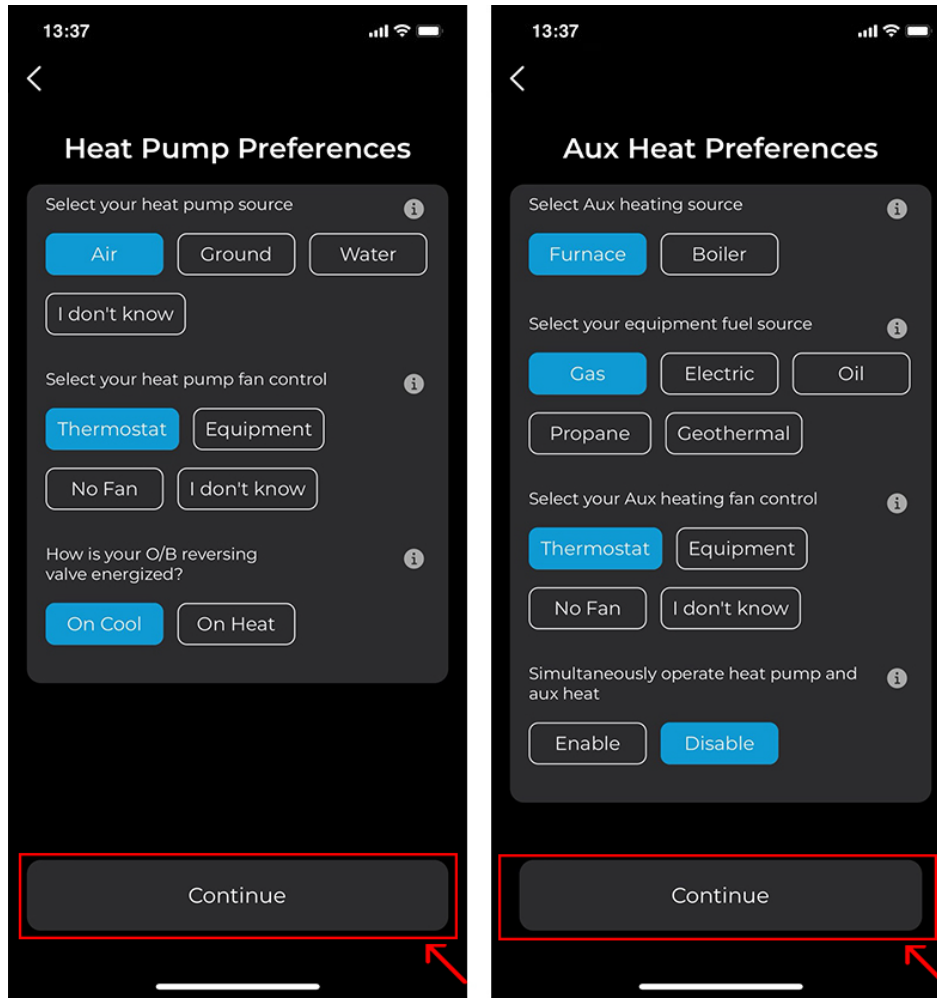
Step 4: Select the wires that you have connected with your thermostat backplate. (Refer to the picture you took while installing your thermostat) Tap on 'Continue', and the Cielo Home app will detect your equipment based on the wires selected. Once the equipment is detected, tap on 'Continue' to go to the next step.

Note: These screens may appear different based on your wires selection.



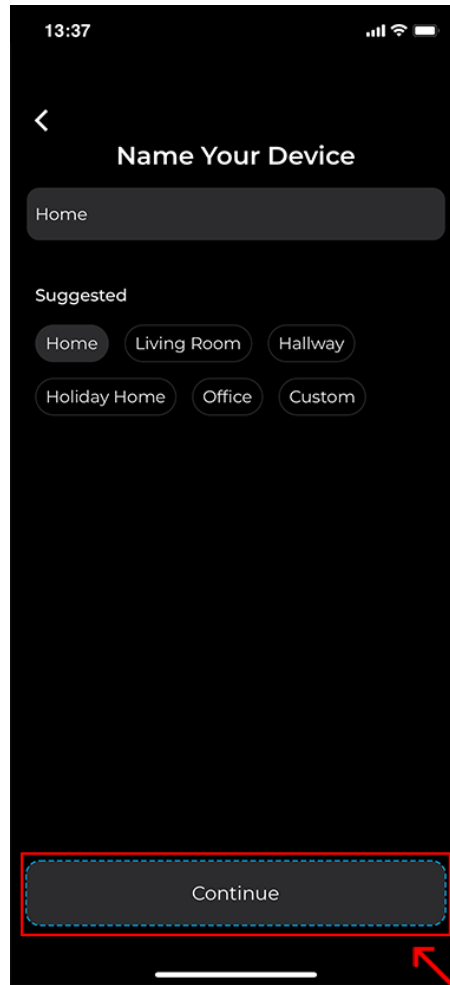
Note: In case the detected equipment is wrong, tap 'Modify' and reselect your wires.

Step 5: Based on your wire selection, this step requires you to select your heating source and determine how you want your system to work. Tap on 'Continue' after you have configured these settings.



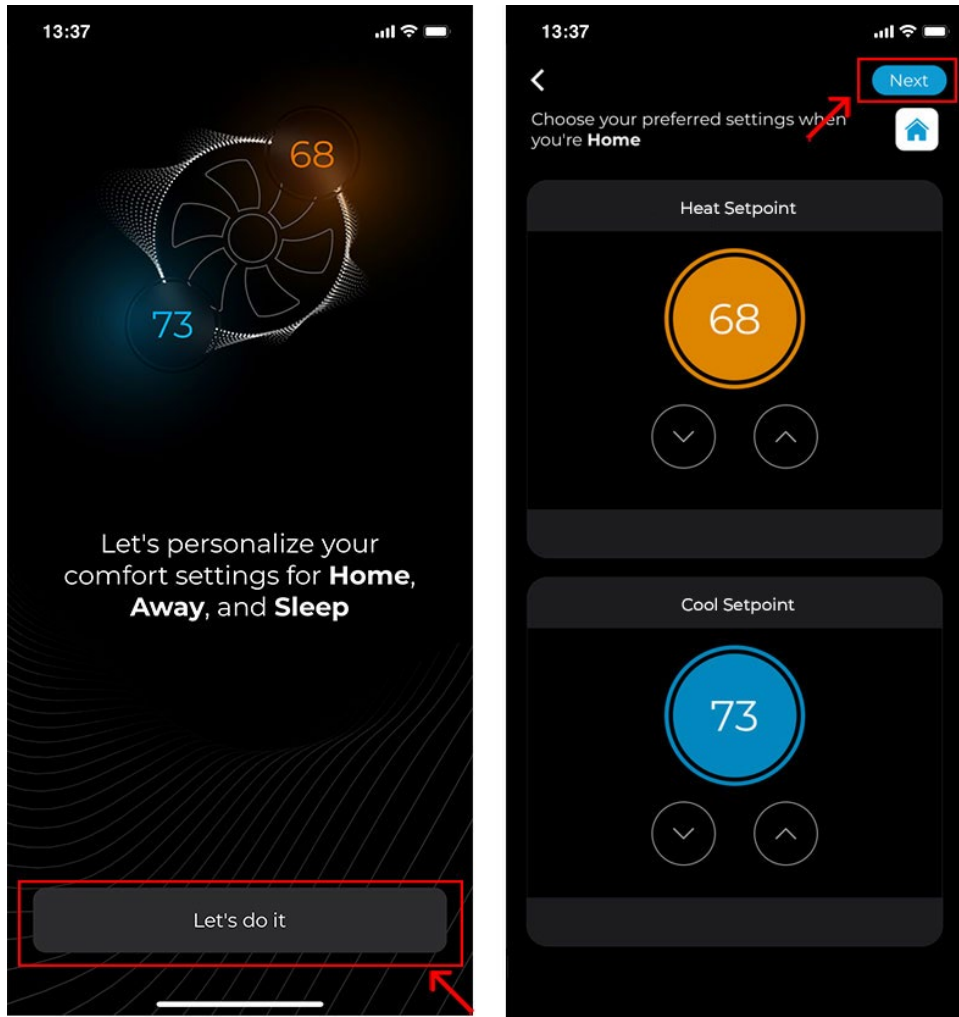
Note: The system preferences screen may appear different based on your HVAC system.

Step 6: Name your thermostat and tap on 'Continue' to move to the next step.



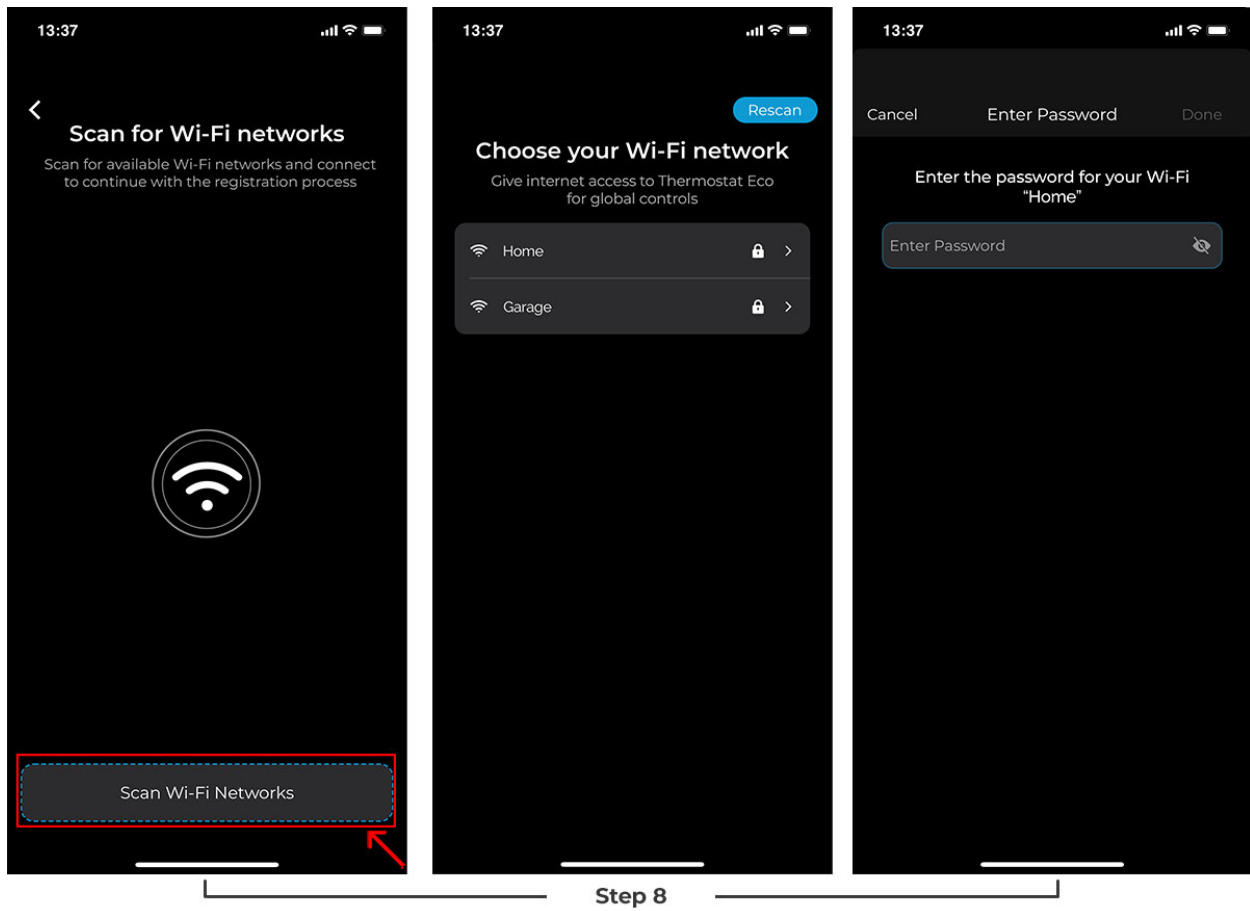
Step 6

Step 7: Next, personalize your desired comfort settings for Home, Away, and Sleep. You can also change these settings later via the app. Tap 'Next' when you are done.

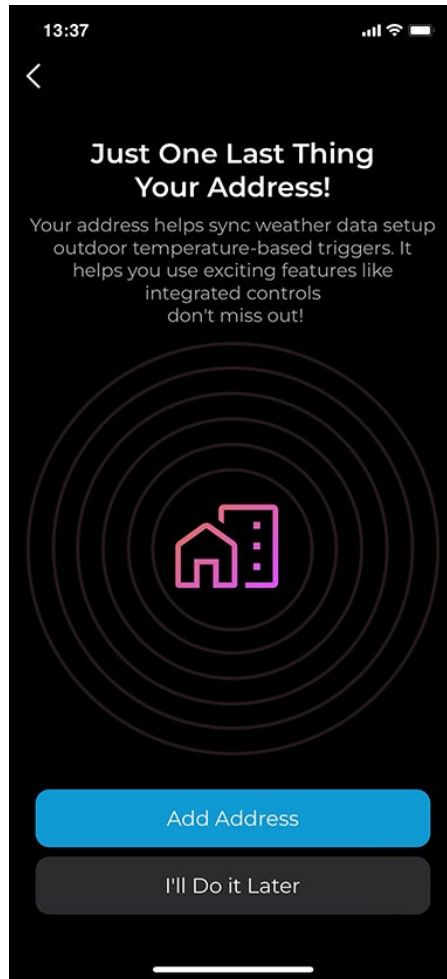


Step 7

Step 8: Tap on 'Scan Wi-Fi Networks' and select your internet connection. Enter your password to connect the smart thermostat to the internet.

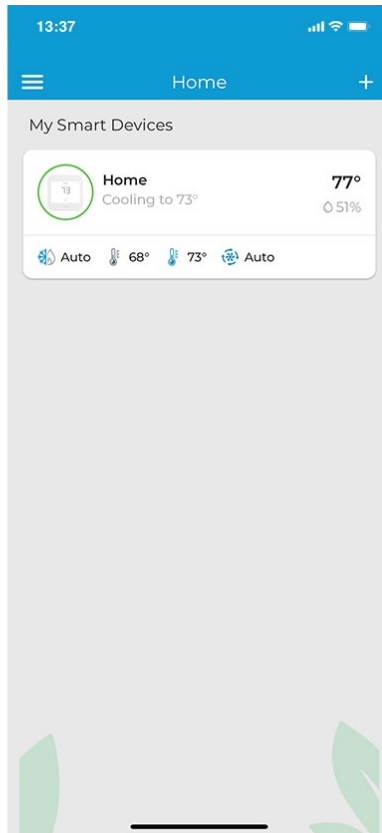
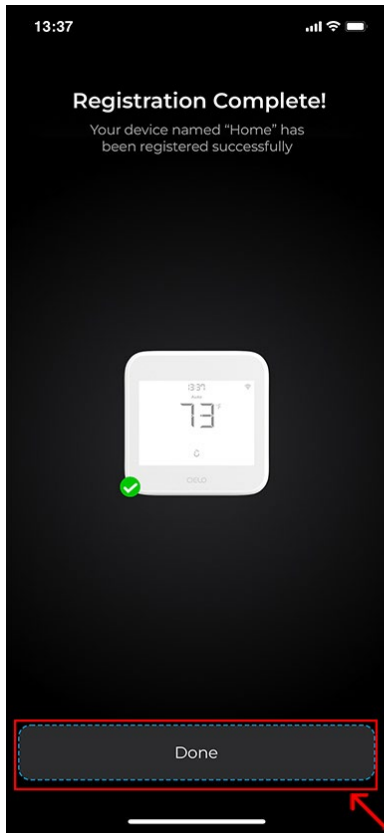


Step 9: Add your address to sync weather data. This will allow you to use exciting features like integrated controls (set-up automation based on outdoor temperature).

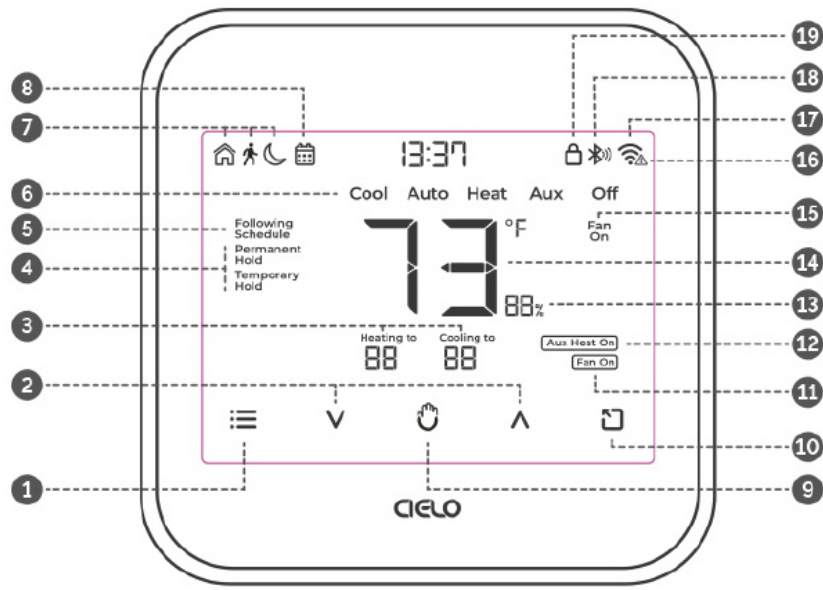


Step 9

The registration process is complete. Tap 'Done', and your Thermostat Eco will appear on the Home Screen.



On-Device Display & Controls:



- | | | |
|----------------------------------|---------------------------------|----------------------------------|
| 1. Menu Button | 8. Schedule Set Indicator | 14. Indoor Temperature |
| 2. Temperature Up & Down Buttons | 9. Wake Up/Hold Settings Button | 15. Fan Settings |
| 3. Set Point Temperatures | 10. Presets Button | 16. No Internet Access |
| 4. Hold Status | 11. Fan Running Indicator | 17. Wi-Fi Indicator |
| 5. Following Schedule Indicator | 12. Auxiliary Heat Indicator | 18. Bluetooth Indicator |
| 6. Modes | 13. Indoor Humidity | 19. Screen Lock/Unlock Indicator |
| 7. Active Preset Indicator | | |

Changing the mode of your HVAC system:

Touch the menu button once. The modes will start blinking. Use the up or down button to select the mode (i.e., Cool, Heat, etc.).

Changing the fan settings:

Touch the menu button twice. The fan settings icon will start blinking. Use the up or down button to change the fan settings (i.e., On, Auto).

Locking/Unlocking the display interface:

Touch and hold the Temperature Up and Down buttons simultaneously until the lock icon on the top right of the screen turns solid or disappears.

Resetting the Wi-Fi of Smart Thermostat Eco:

Touch and hold the Temperature Up and Hold Settings buttons simultaneously until the Wi-Fi icon disappears, and the Bluetooth icon starts blinking.

Wi-Fi Icon:

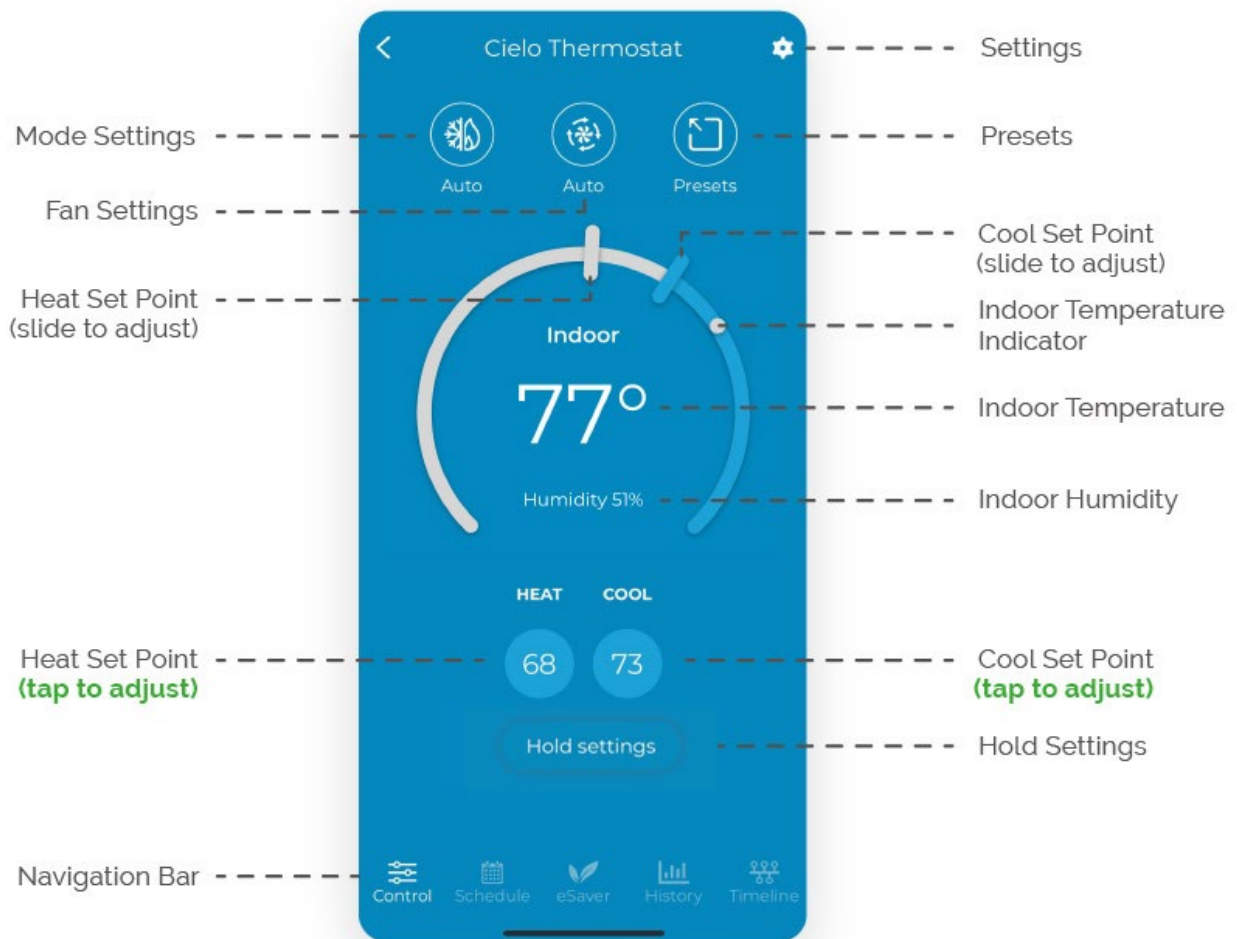
Case 1:- Stable Wi-Fi icon - Device is connected to the internet, showing Wi-Fi strength.

Case 2:- Wi-Fi icon with small triangle - Device is connected to the router but has no internet access. Please ensure you have a working internet connection and restart the device.

Bluetooth Icon:

Blinking Bluetooth icon - Device is in broadcast (AP) mode. Please complete the registration process.

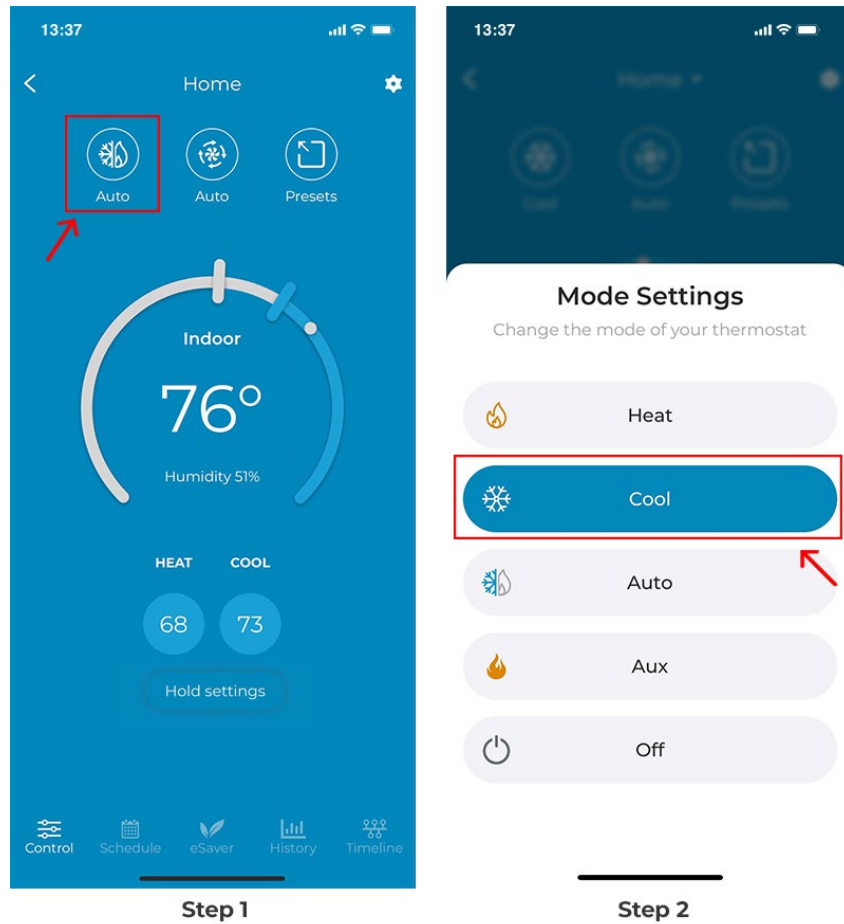
Cielo Home App Controls:



Changing the Mode of Your HVAC System

Step 1: On the Control screen, tap on the 'Mode' icon.

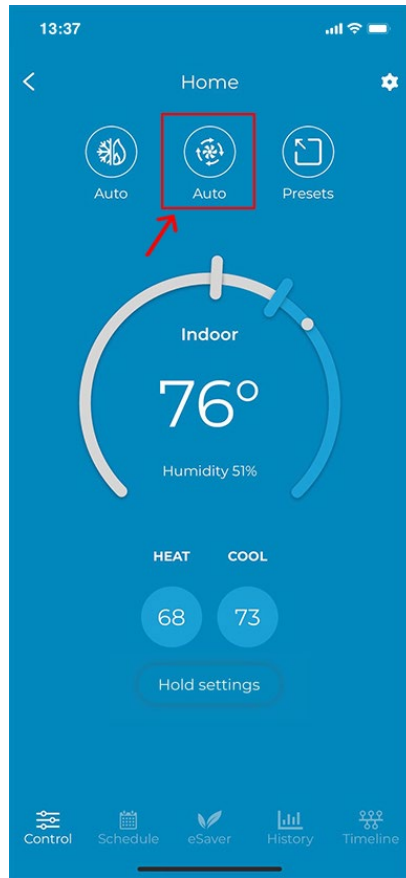
Step 2: You can select your desired mode by tapping on it.



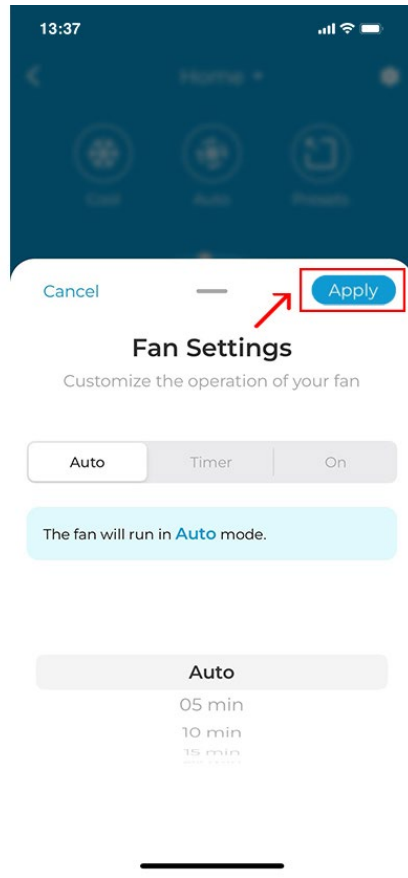
Changing Fan Settings

Step 1: On the Control screen, tap on the fan icon.

Step 2: You have the option to run the fan on Auto, set a timer, or turn it on continuously.



Step 1

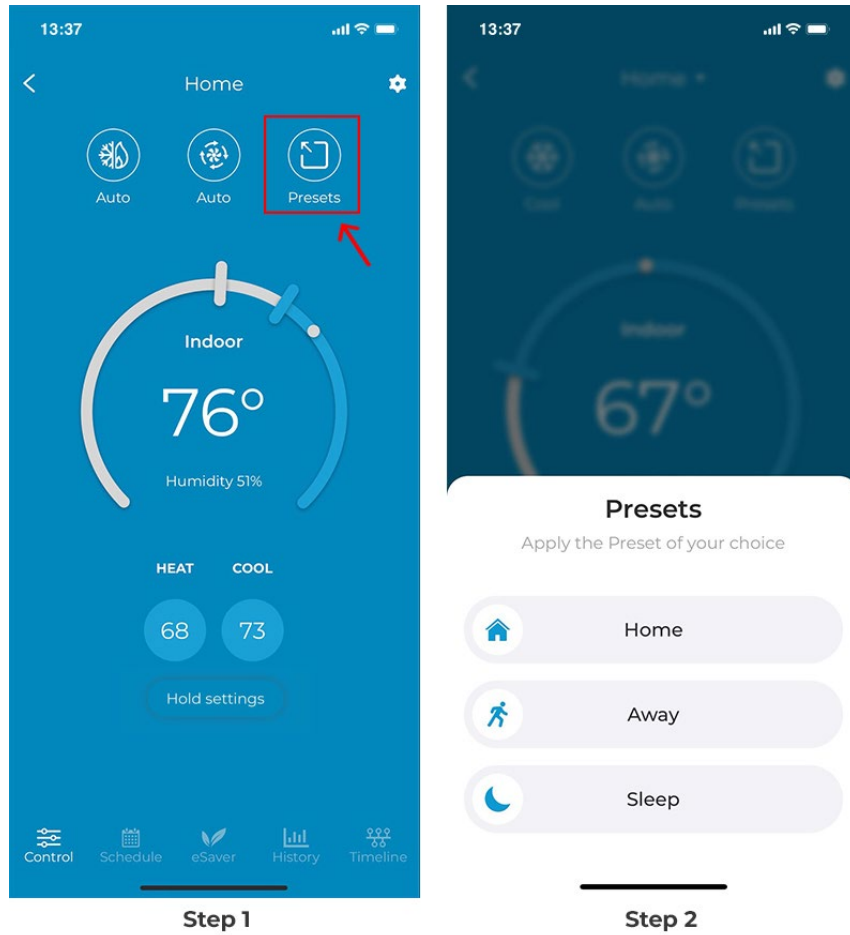


Step 2

Setting a Preset

Step 1: On the Control screen, tap on the 'Preset' icon.

Step 2: You can apply the preset of your choice by tapping on it.

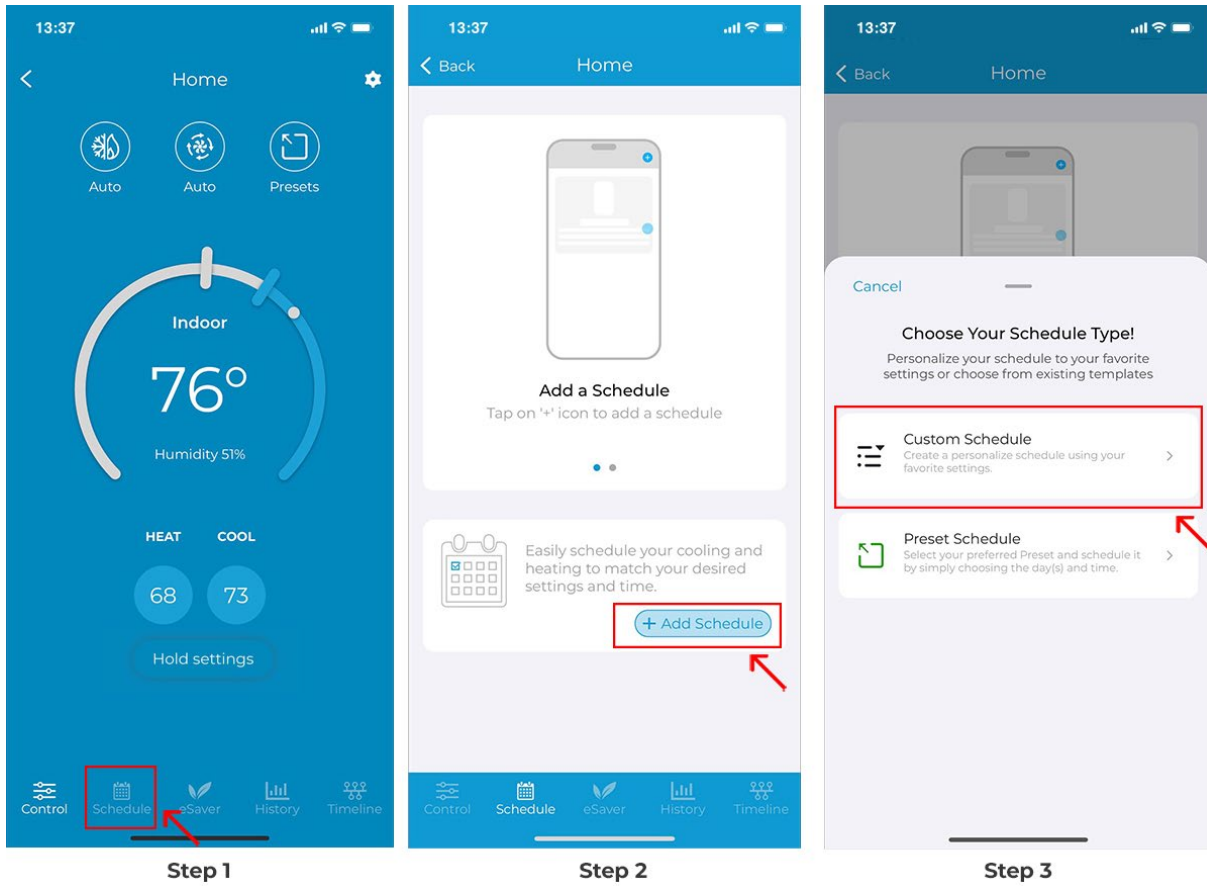


Setting up custom schedules using the Cielo Home app:

Step 1: On the Control screen, tap on 'Schedule' in the navigation bar.

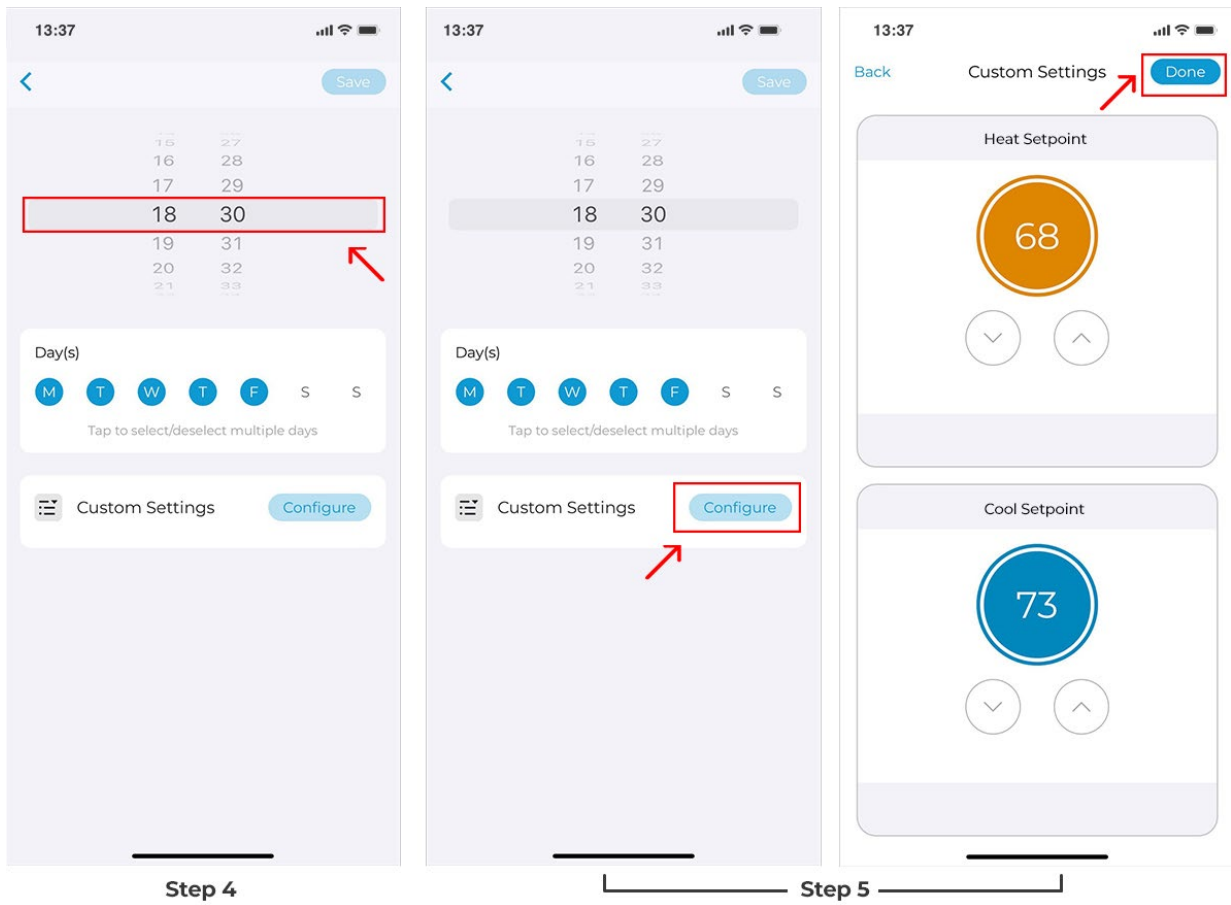
Step 2: Tap on the '+ Add Schedule' icon.

Step 3: Tap on 'Custom Schedule'.



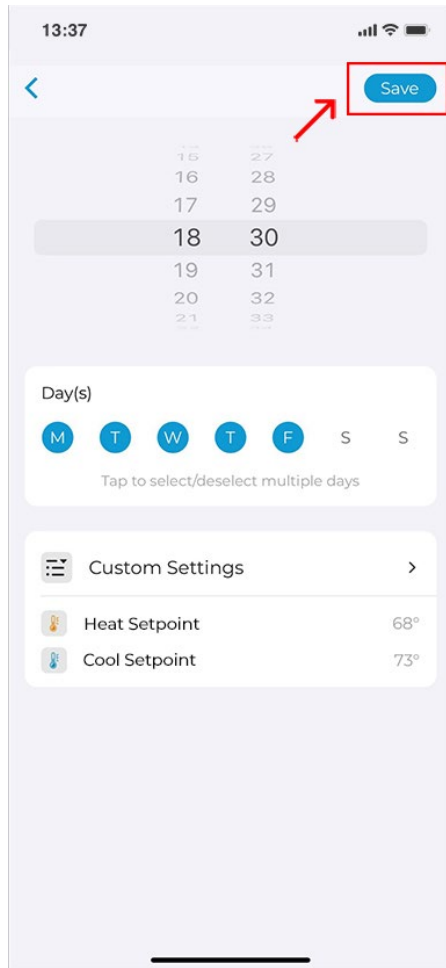
Step 4: Select the time and day(s) on which you want the schedule to run.

Step 5: Tap on 'Configure' and set your Heat and Cool Setpoints as per your preference, then tap 'Done'.

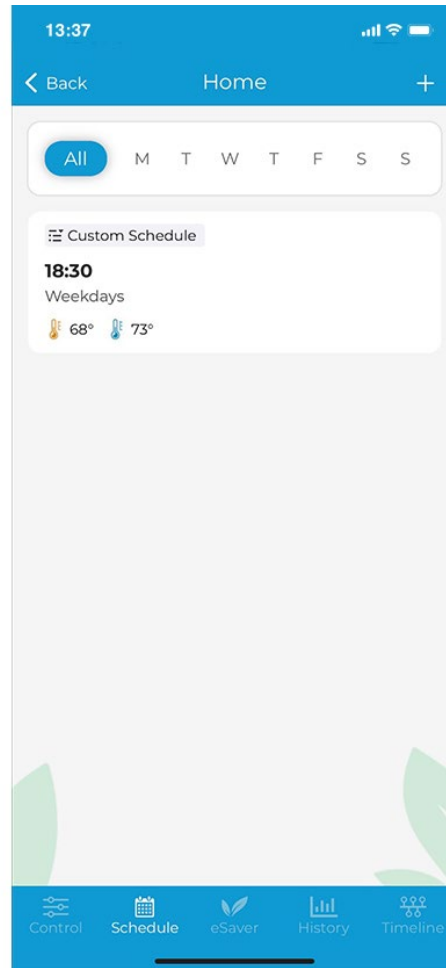


Step 6: Now tap on 'Save'.

Your custom schedule is now set.



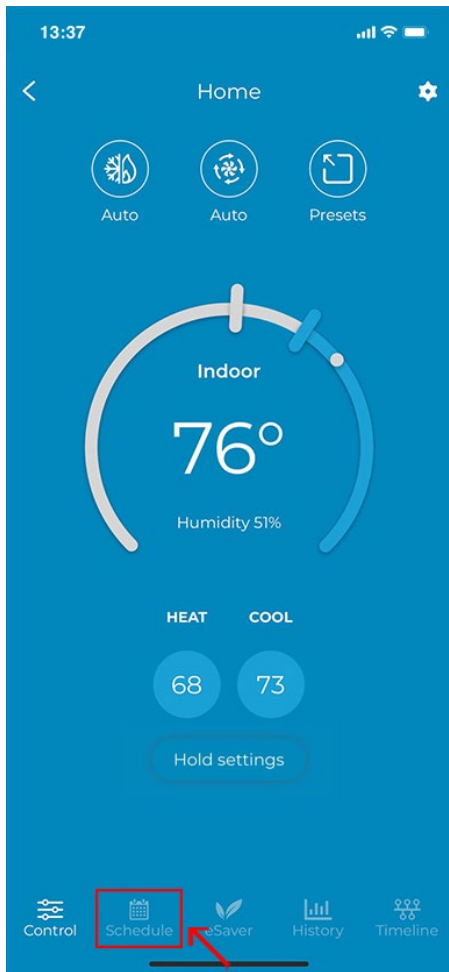
Step 6



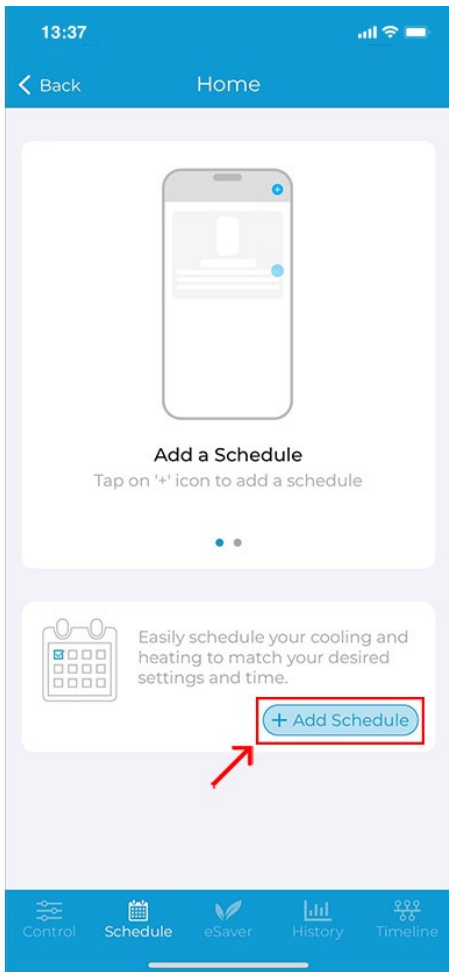
Setting up Preset schedules using the Cielo Home app:

Step 1: On the Control screen, tap on 'Schedule' in the navigation bar.

Step 2: Tap on the '+ Add Schedule' icon.

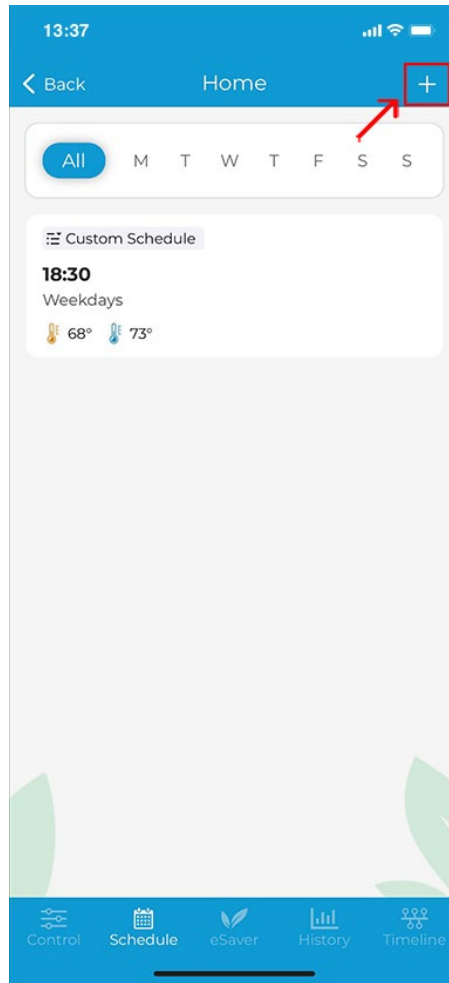


Step 1



Step 2

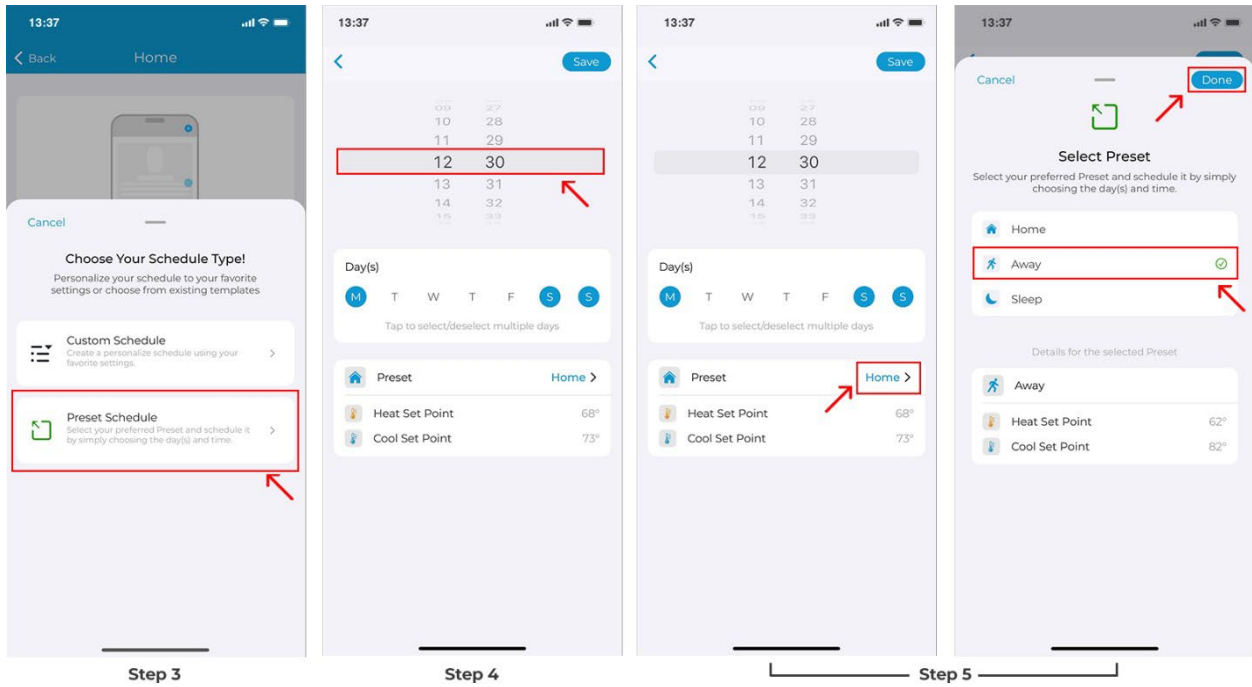
If you already have a schedule added, the '+' icon will appear in the top right corner.



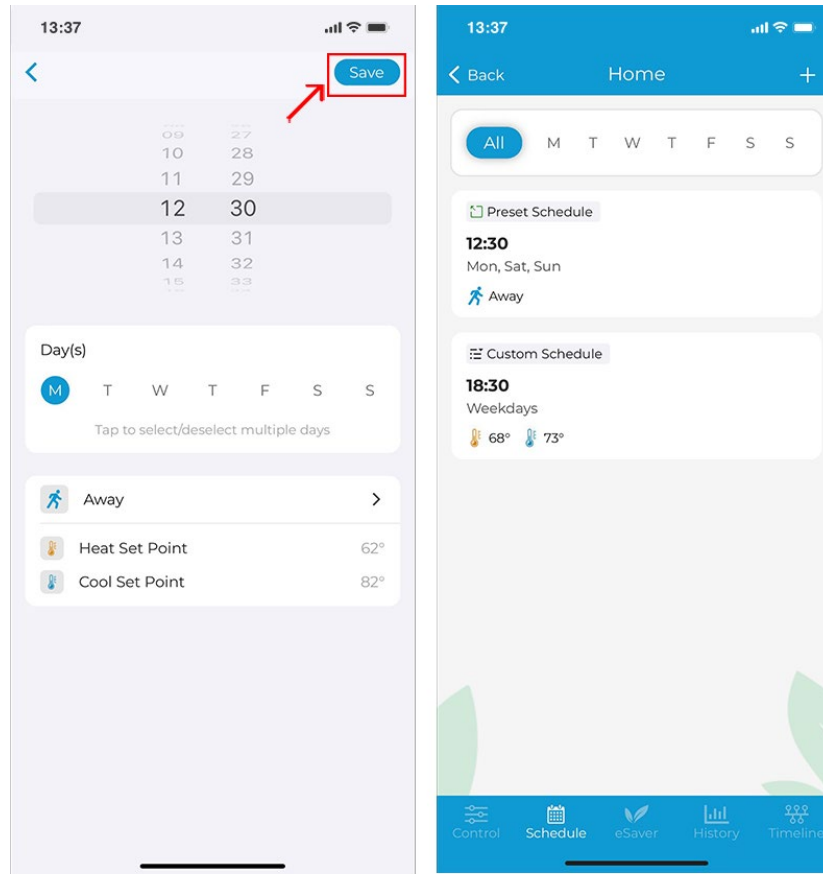
Step 3: Tap on 'Preset Schedule'.

Step 4: Select the time and day(s) on which you want the schedule to run.

Step 5: Select the 'Preset' you want to schedule., i.e., Home, Away, or Sleep. Tap 'Done'.



Step 6: Now tap on 'Save'.
Your preset schedule is now set.



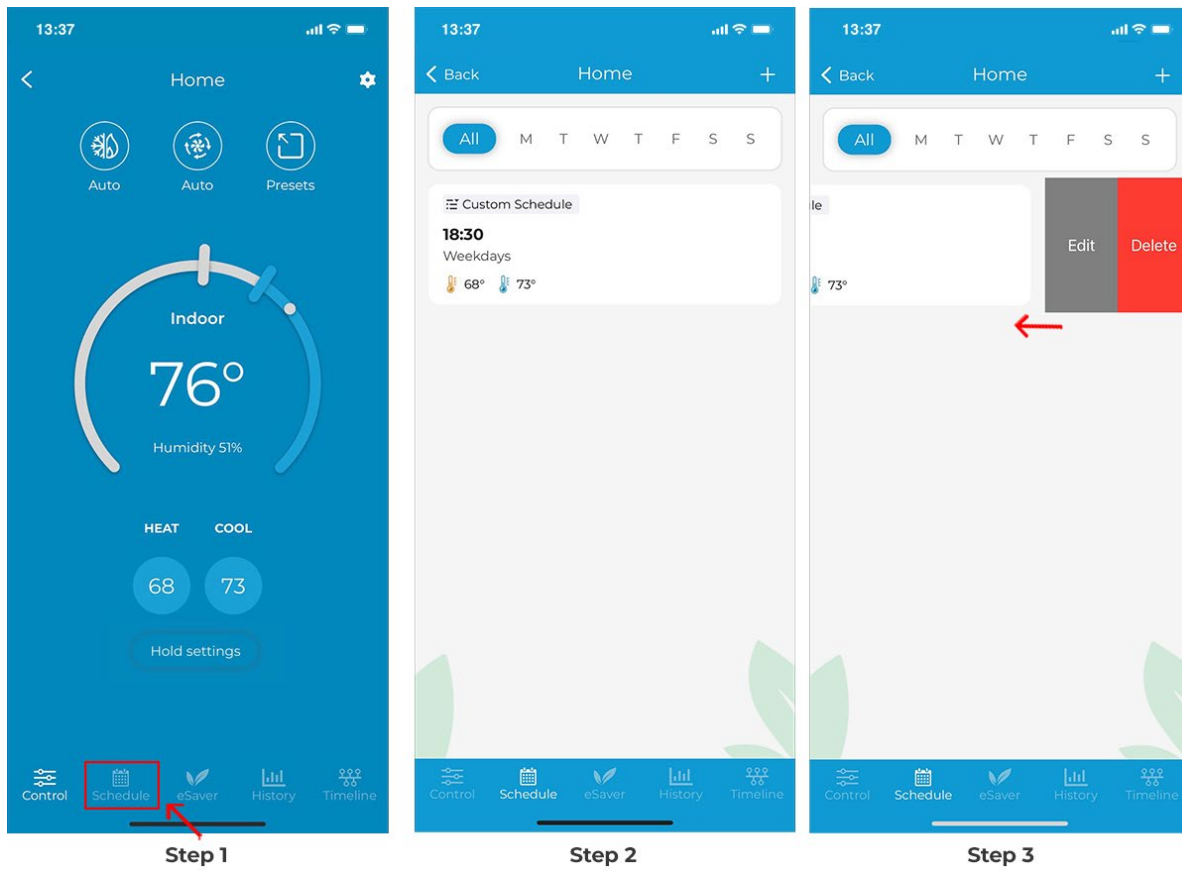
Step 6

Deleting/Editing a schedule

Step 1: On the Control screen, tap on 'Schedules' in the navigation bar.

Step 2: In the 'Schedule' tab, you will see all your set schedules.

Step 3: Swipe left on the schedule you want to edit or delete until both options appear. Choose your desired option and proceed. You can also swipe left to right till the edge of the screen to delete the schedule.



Enabling Location-Based Controls

You can configure location-based controls for your HVAC system by performing these steps via the Cielo Home app:

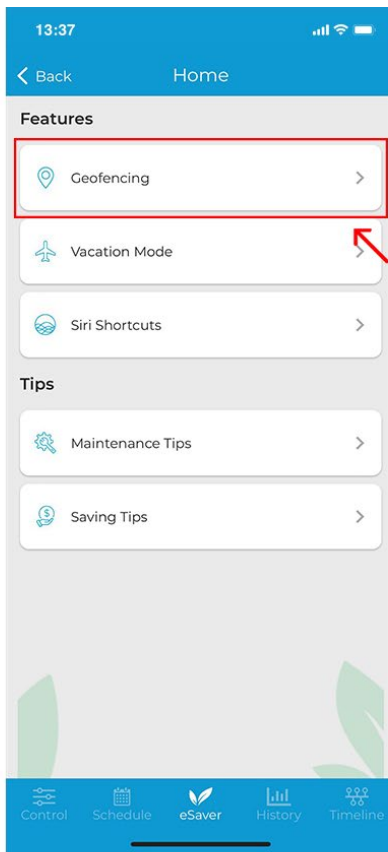
Step 1: On the Control screen, Tap on 'e-saver' in the navigation bar.

Step 2: Tap on 'Geofencing'.

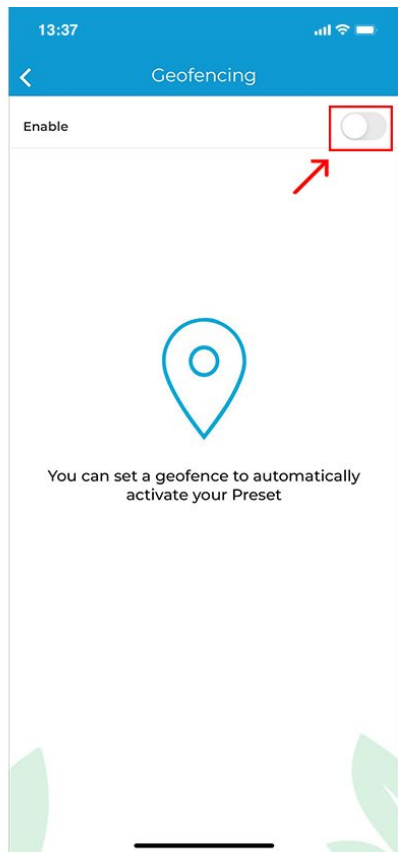
Step 3: Toggle the slider to enable Location-Based controls.



Step 1



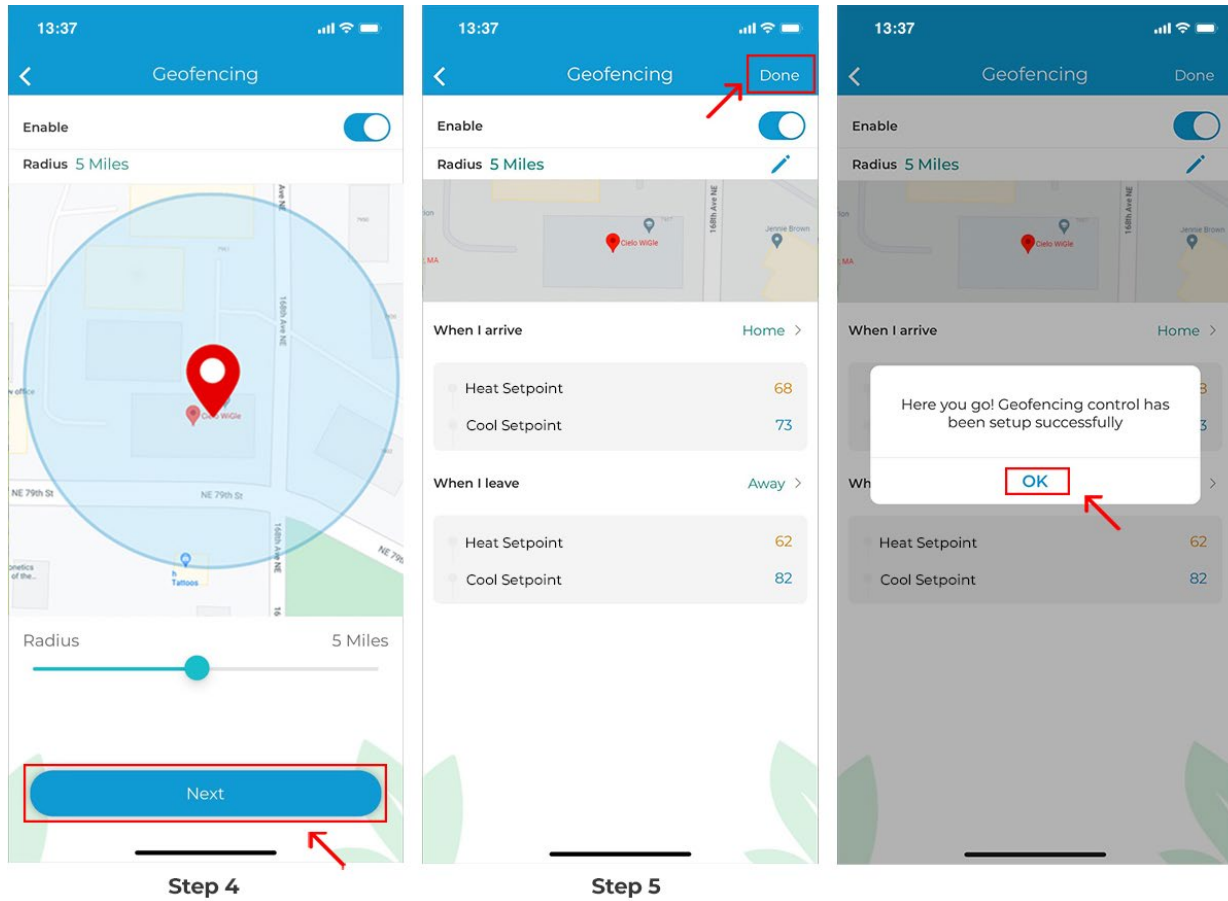
Step 2



Step 3

Step 4: You will see your current location on the map. Set a geofence range between 1 - 10 Miles using the slider. Entering or exiting this range will trigger the Presets. Tap on 'Next'.

Step 5: Select the preset you want to set when you enter or exit the location. Tap on 'Done'. Geofencing has been enabled.



Setting up Vacation Mode

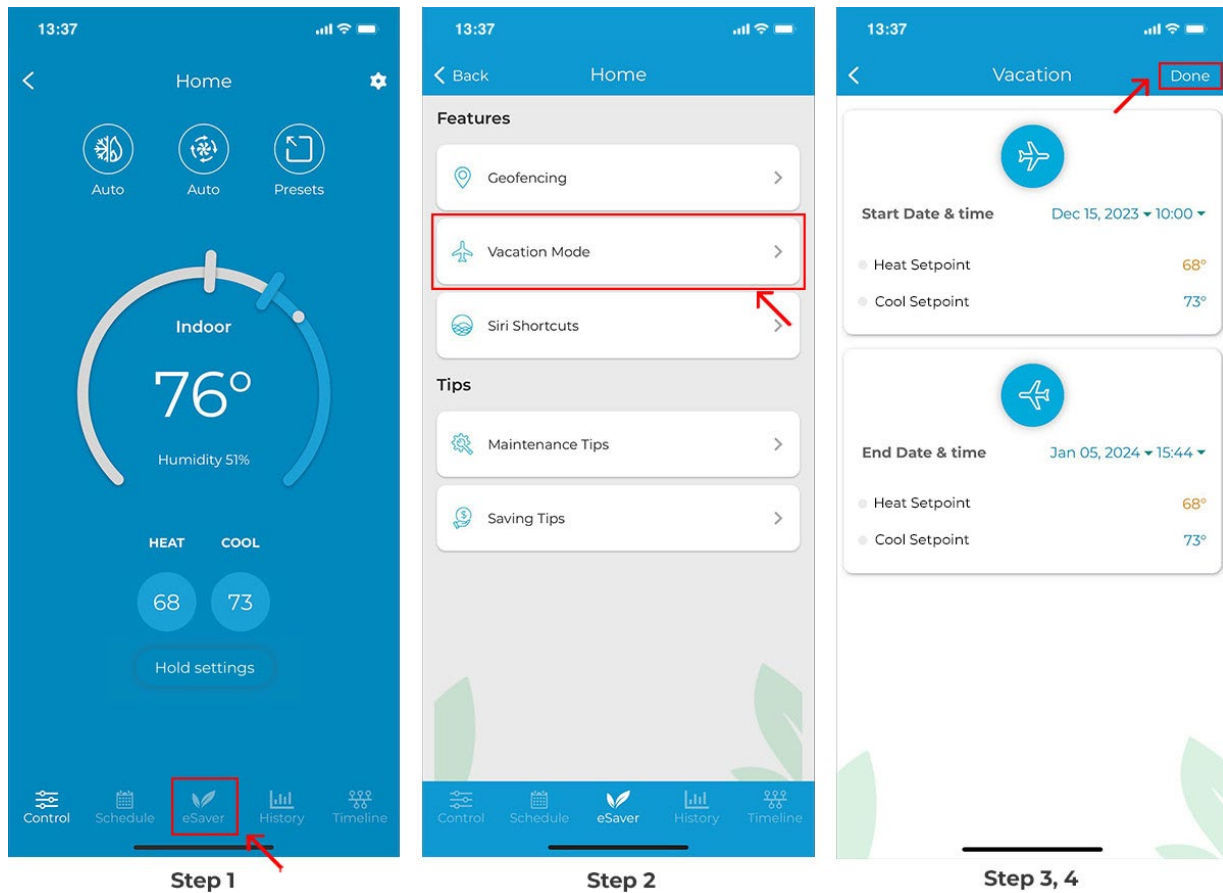
Step 1: On the Control screen, Tap on 'e-saver' in the navigation bar.

Step 2: Tap on 'Vacation Mode'.

Step 3: Set start and end date/time, and set your preferred temperature settings,

Step 4: Tap on 'Done'.

Your vacation settings are now saved.

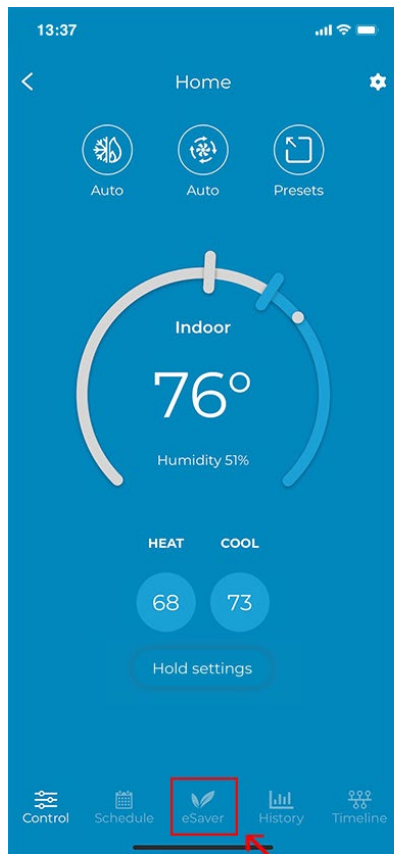


Editing/Deleting Vacation Mode

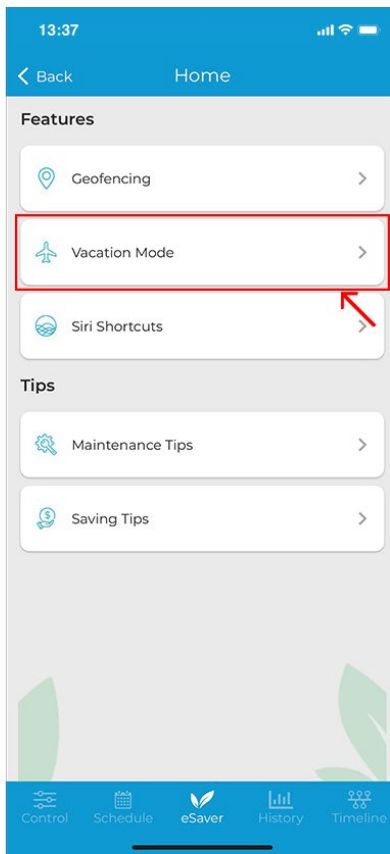
Step 1: On the Control screen, Tap on 'e-saver' in the navigation bar.

Step 2: Tap on 'Vacation Mode'.

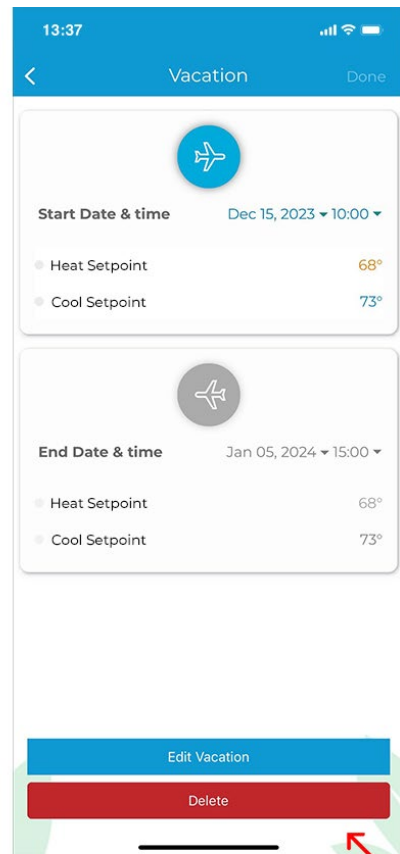
Step 3: You have the option to edit or delete the vacation at the bottom of the screen.



Step 1



Step 2



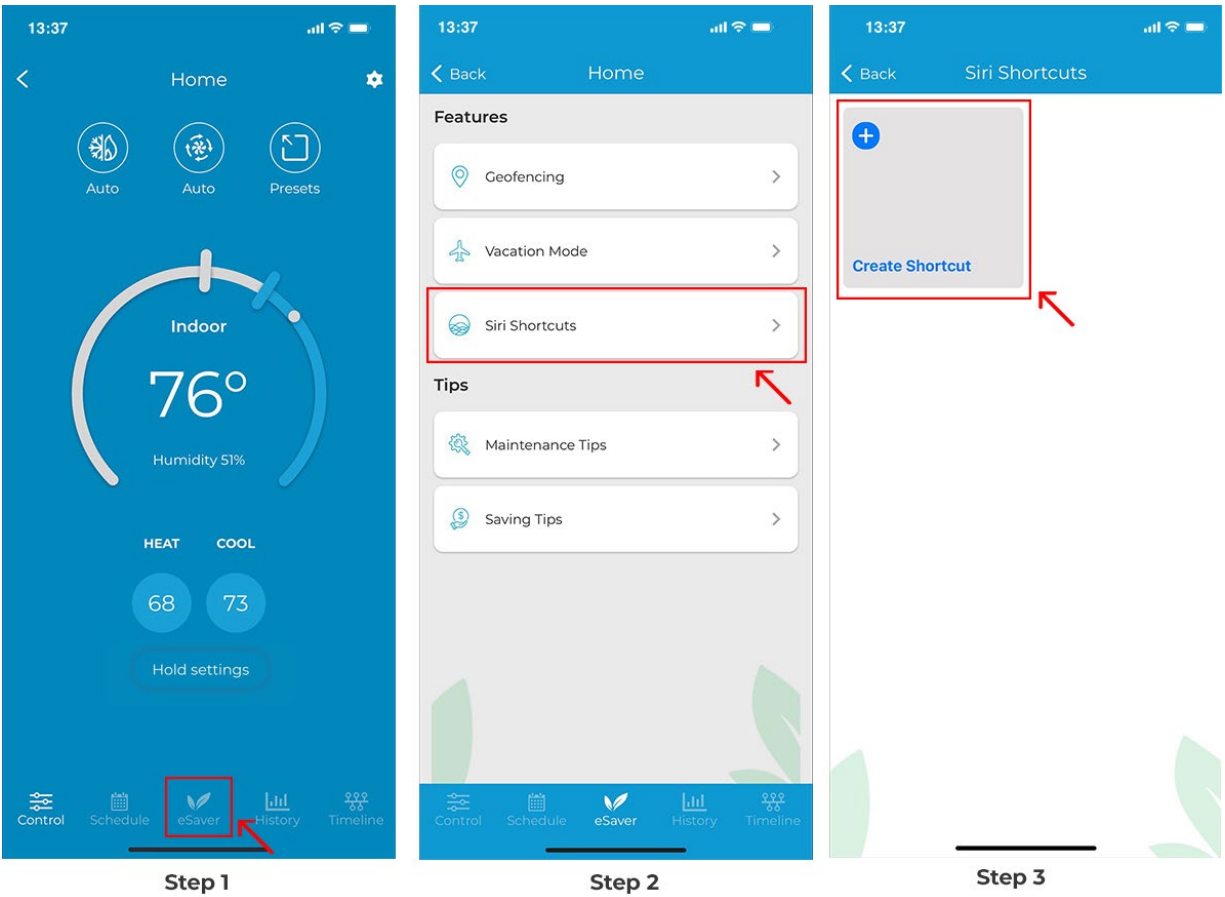
Step 3

Adding Siri Shortcuts (For iOS)

Step 1: On the Control screen, Tap on 'e-saver' in the navigation bar.

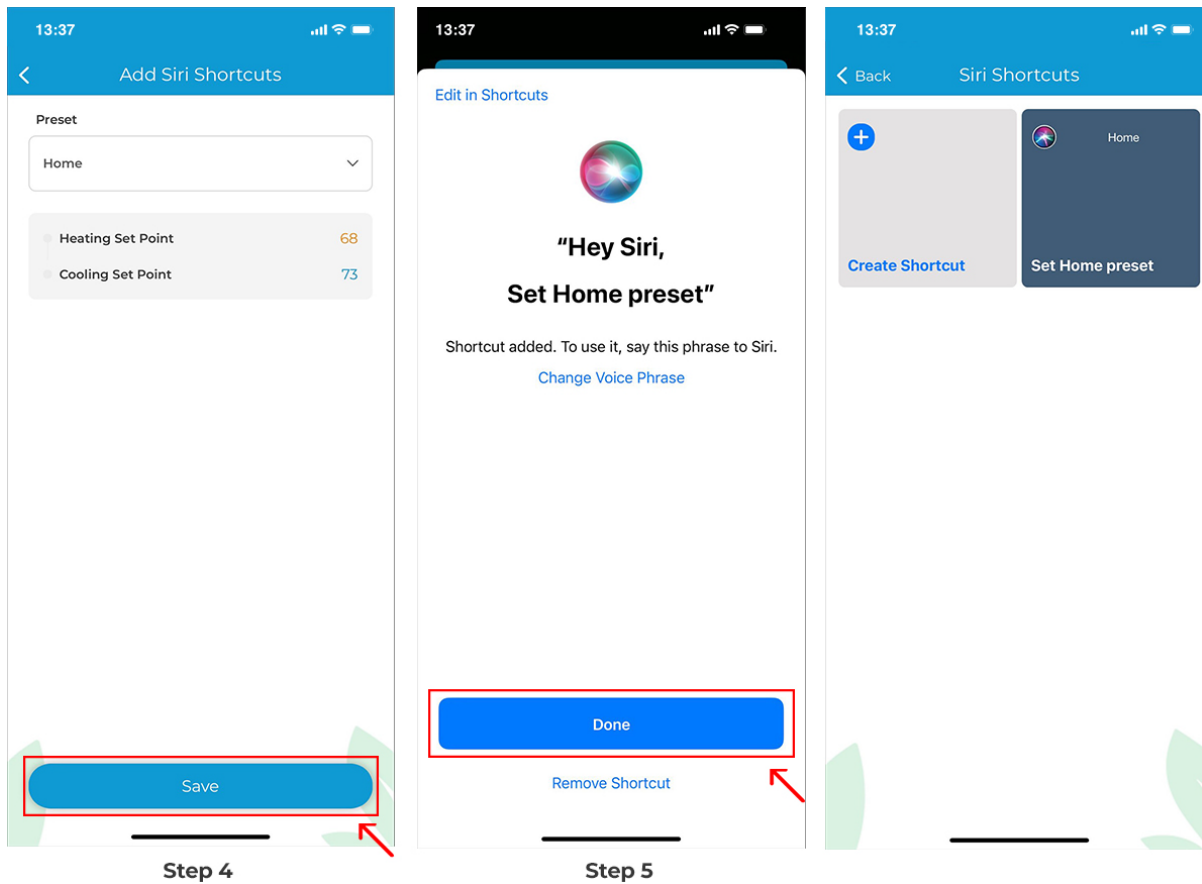
Step 2: Tap on 'Siri Shortcuts'.

Step 3: Tap on 'Create Shortcut'.



Step 4: Choose the Preset you want to add as a shortcut. Tap on 'Save'.

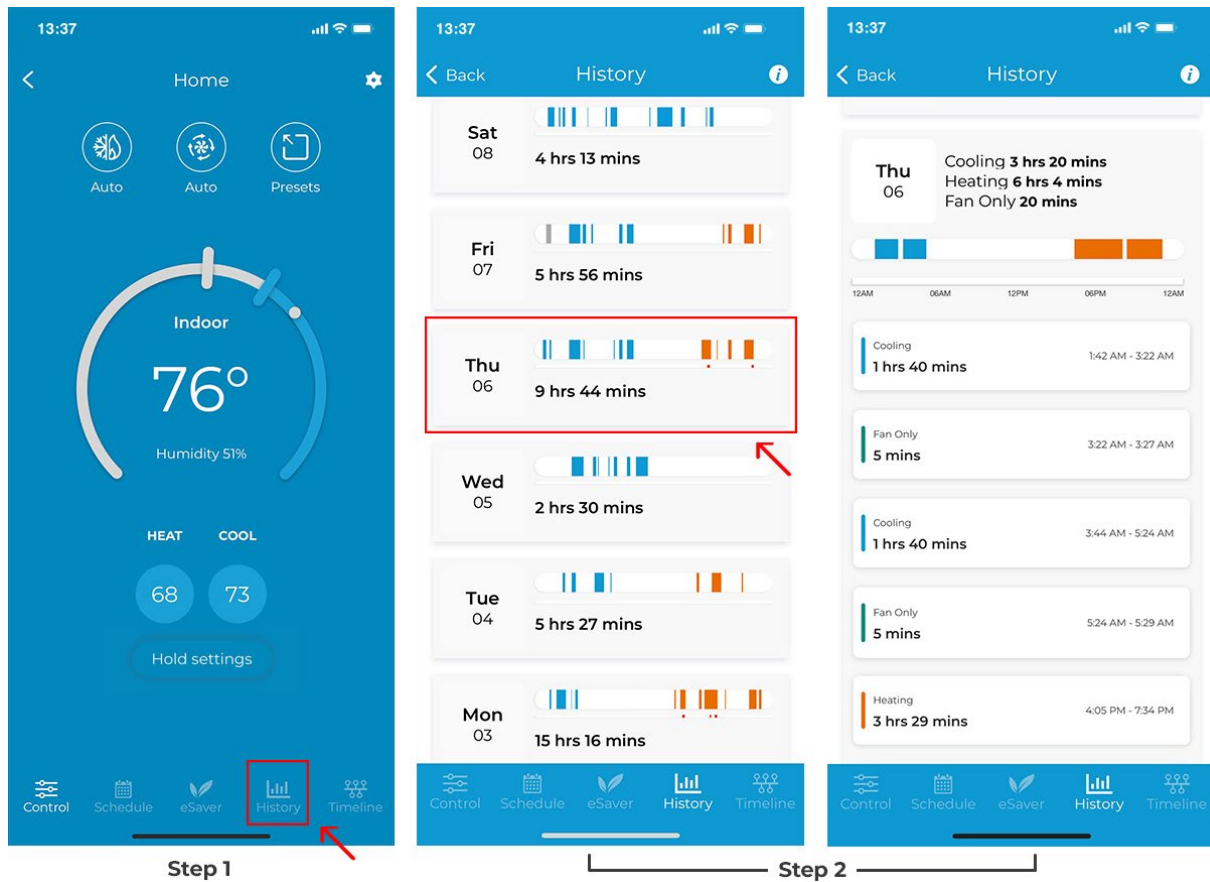
Step 5: Next, enter the phrase on which you want the Shortcut to activate. In this example, Set Home Preset'. Tap on 'Done'.



Checking Usage History

Step 1: On the Control screen, Tap on 'History'.

Step 2: Your last 30-day usage summary should appear on the screen. Tap on any day to learn more details about your detailed usage history.



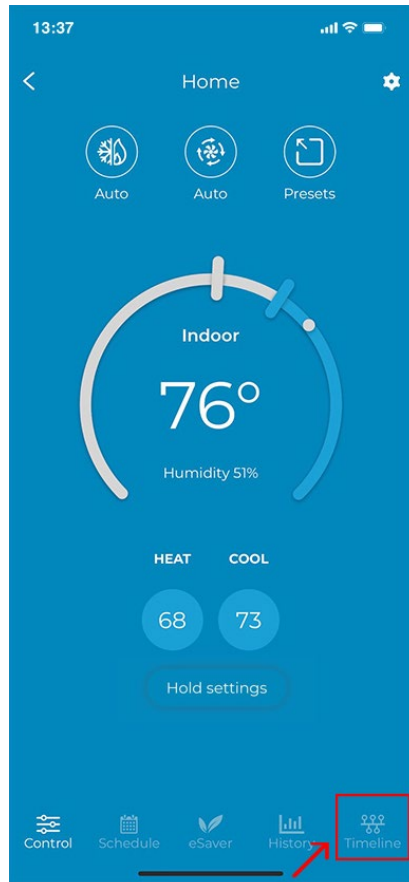
Below is the color legend for the detailed usage statistics:

- Cooling Stage 1
- Cooling Stage 2
- Heating Stage 1
- Heating Stage 2
- Aux Stage 1
- Aux Stage 2
- Fan Only
- Idle
- Offline

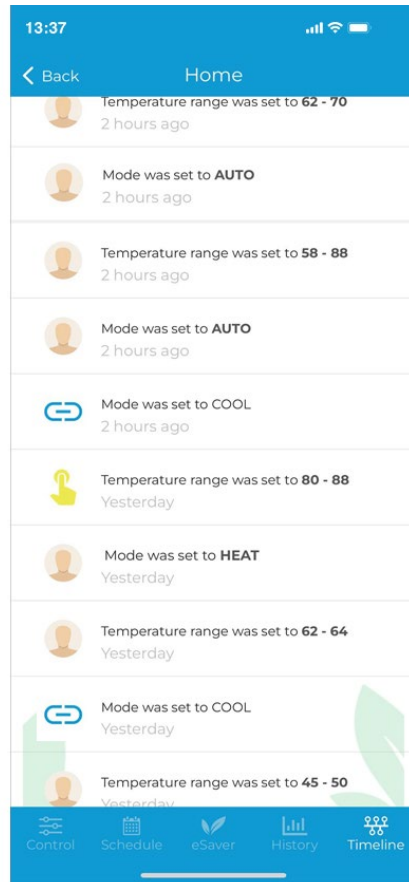
Checking Timeline of Actions

Step 1: On the Control screen, Tap on 'Timeline'.

Step 2: You'll see a complete list of actions performed over the last 60 days.



Step 1



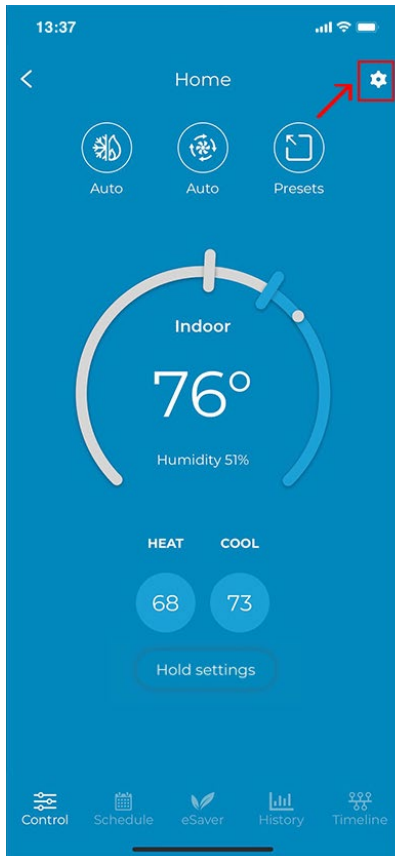
Step 2

Editing a Preset

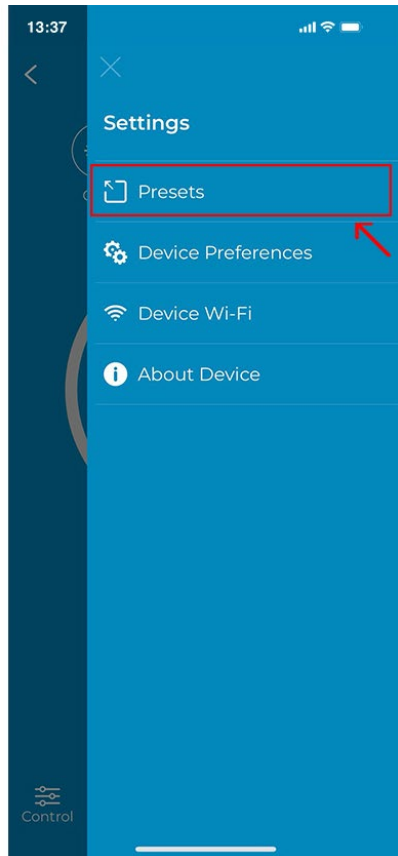
Step 1: Go to settings by tapping the 'Settings' icon on the control screen.

Step 2: Select 'Presets'.

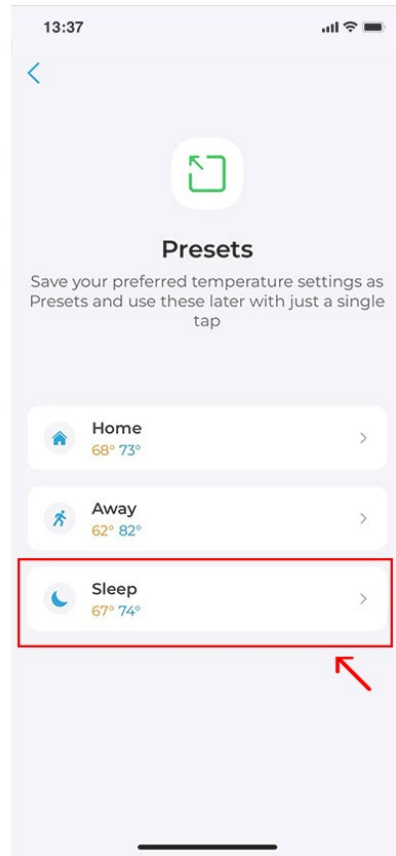
Step 3: Tap on the preset you want to edit.



Step 1



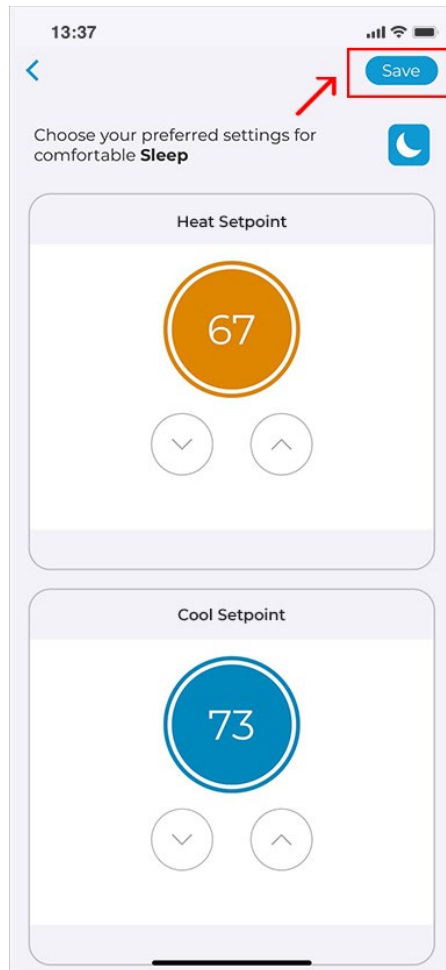
Step 2



Step 3

Step 4: Change your Heat and Cool Setpoints as per your preference, then tap 'Save'.

Your preset has been edited.

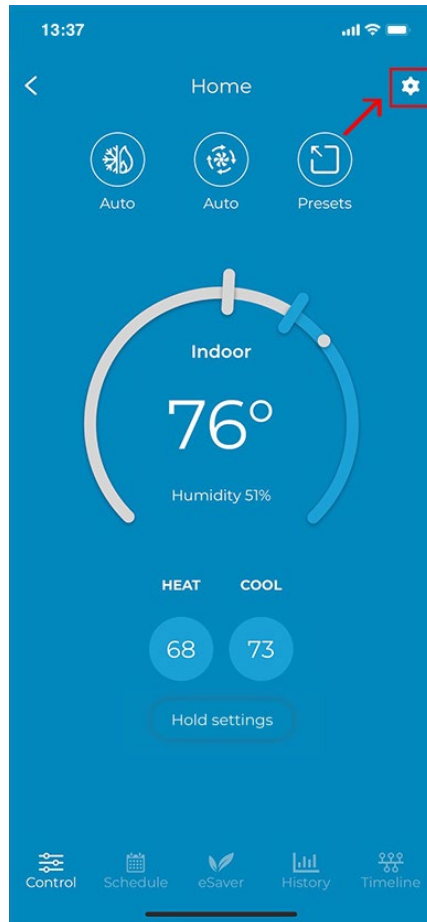


Step 4

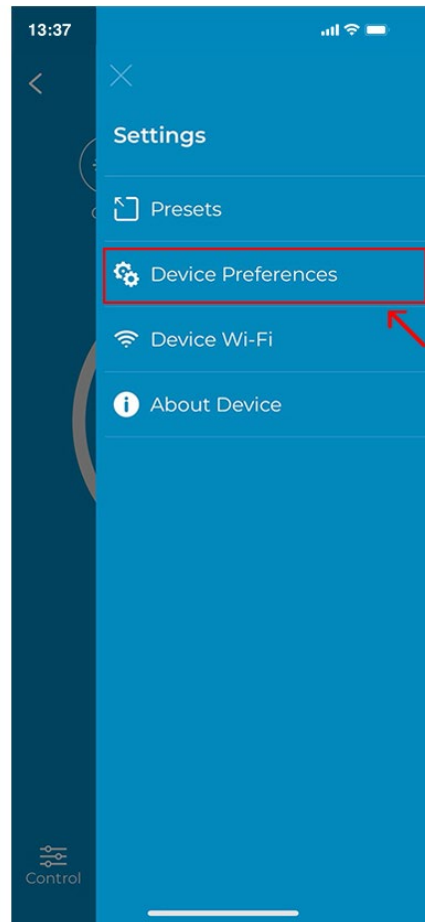
Changing Device Name

Step 1: Tap on the 'Settings' icon on the top right.

Step 2: Tap on 'Device Preferences'.



Step 1

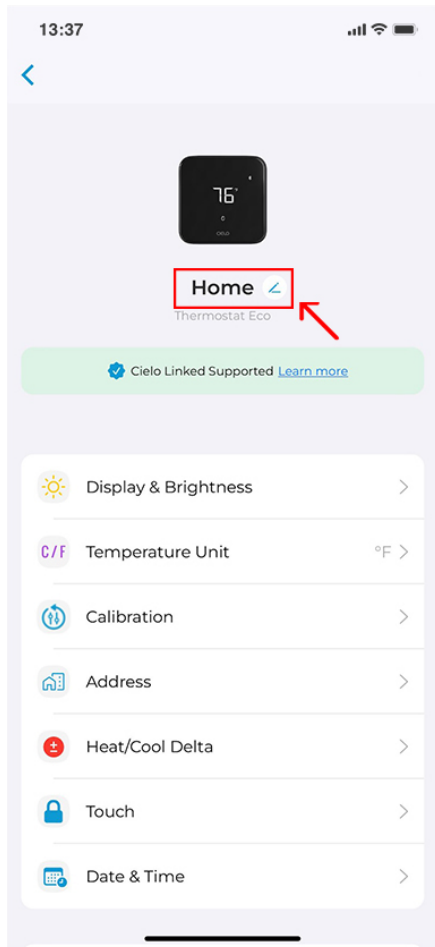


Step 2

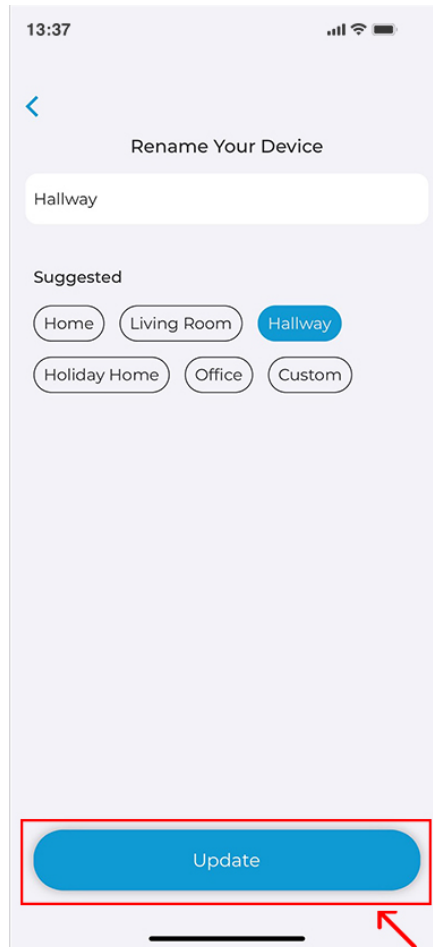
Step 3: Tap the pencil icon in front of the name.

Step 4: Select a new name from the list of suggested names, or select 'Custom' to enter a name of your choice. Tap on 'Update'.

The device name is now changed.



Step 3

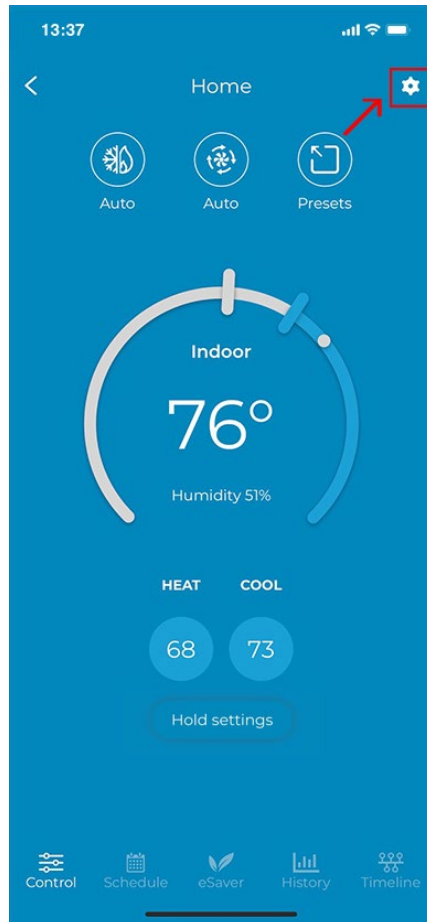


Step 4

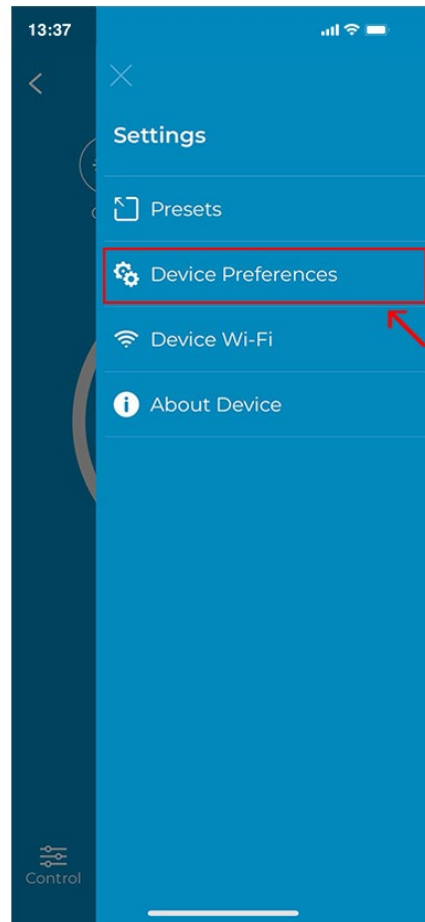
Changing the Brightness and Screen Timeout Settings of the Thermostat

Step 1: Go to settings by tapping the 'Settings' icon on the control screen.

Step 2: Tap on 'Device Preferences'.



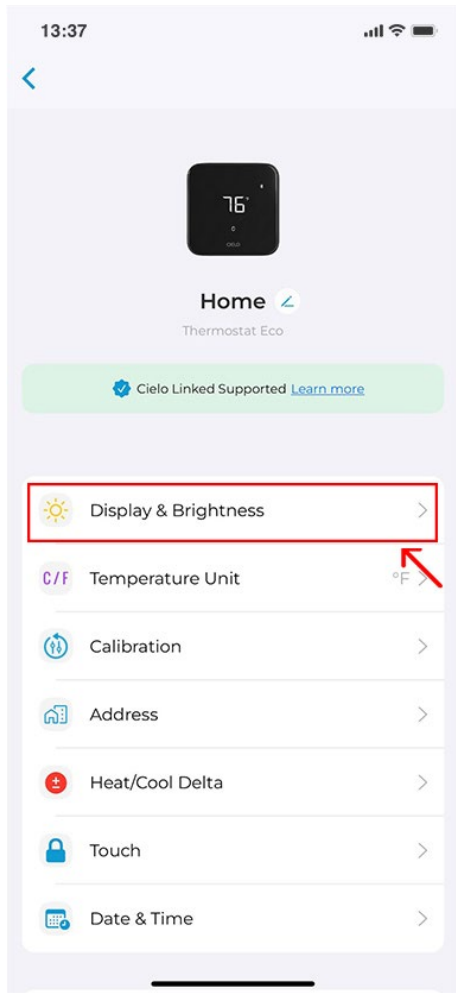
Step 1



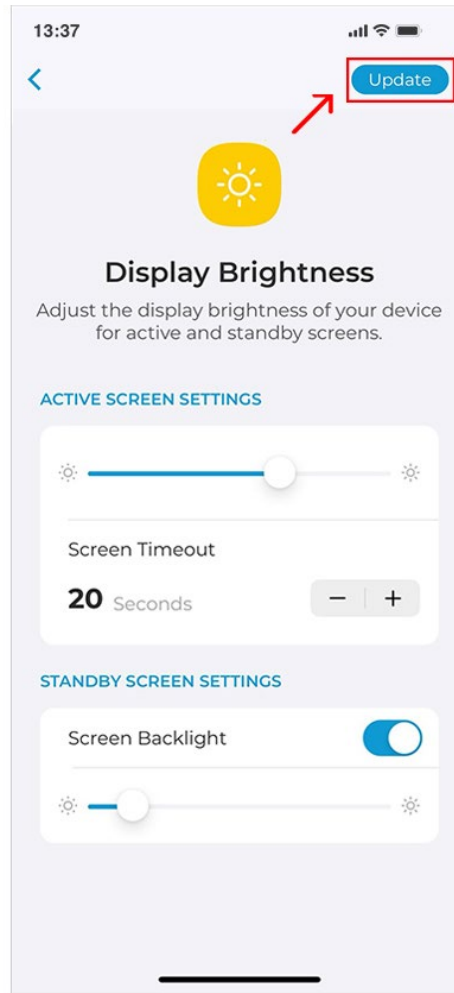
Step 2

Step 3: Tap on 'Display & Brightness'.

Step 4: You have the option to adjust the active screen and standby screen brightness. Drag the slider to adjust the brightness. You can also adjust the screen timeout settings from here.



Step 3

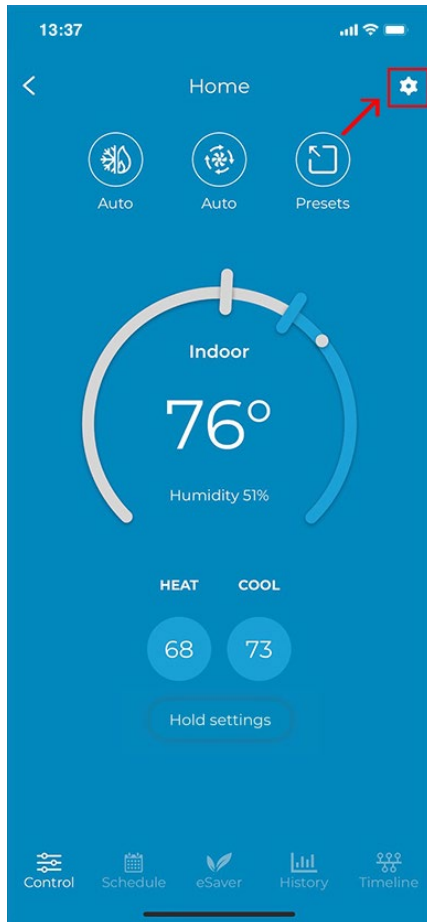


Step 4

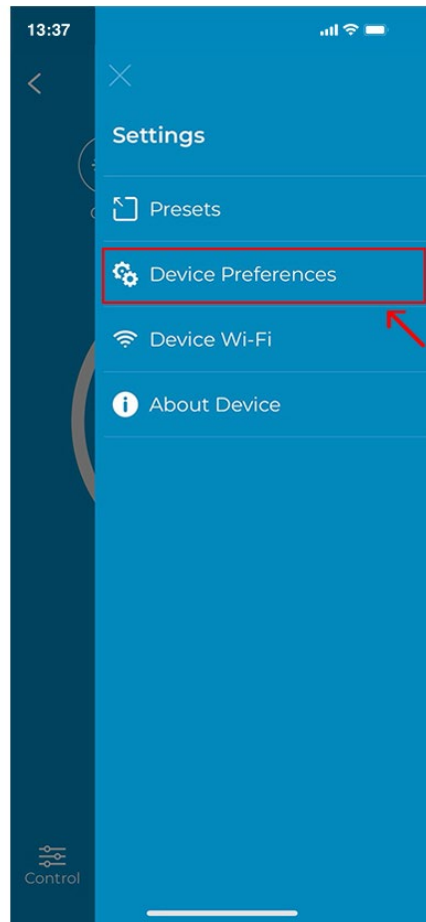
Switch Temperature Units Between Centigrade and Fahrenheit

Step 1: Go to settings by tapping the 'Settings' icon on the control screen.

Step 2: Tap on 'Device Preferences'.



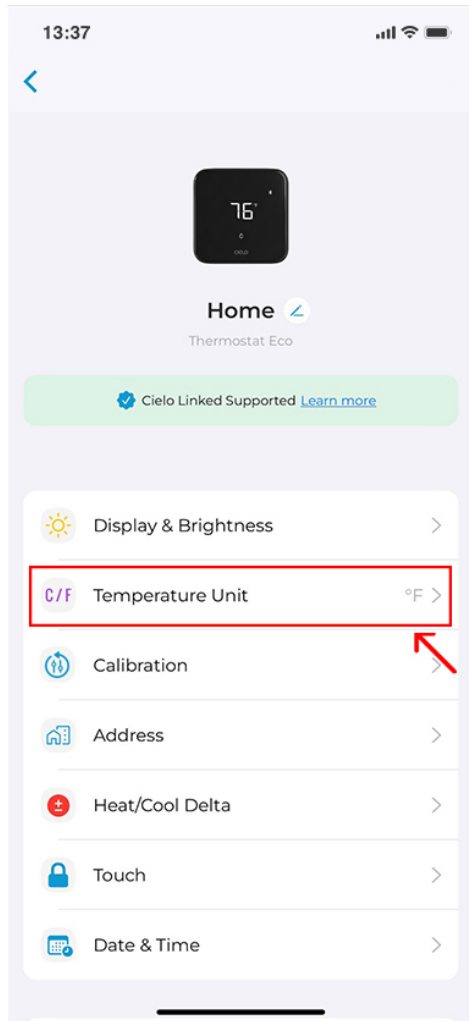
Step 1



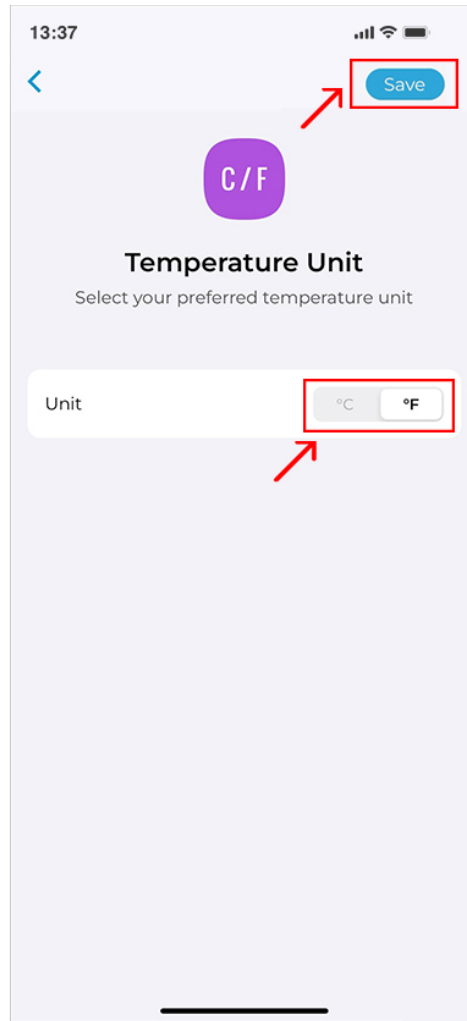
Step 2

Step 3: Tap on 'Temperature Unit'.

Step 4: Tap on the C to F toggle and tap on 'Save'.



Step 3

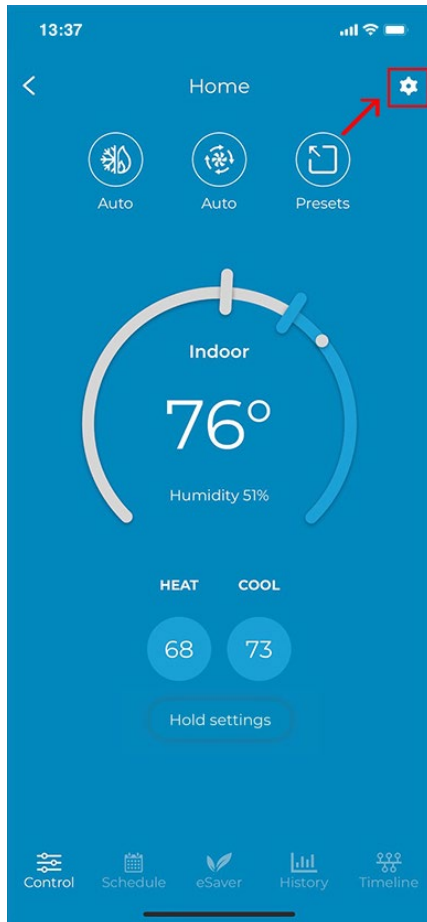


Step 4

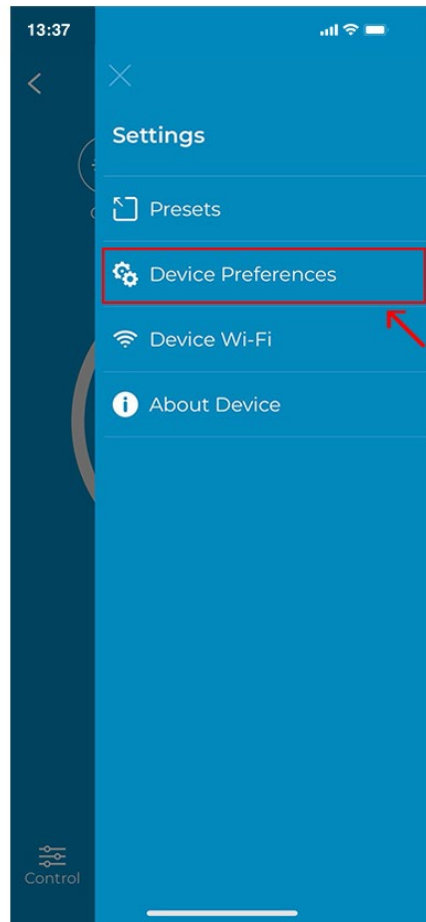
Calibrate Indoor Temperature

Step 1: Go to settings by tapping the 'Settings' icon on the control screen.

Step 2: Tap on 'Device Preferences'.



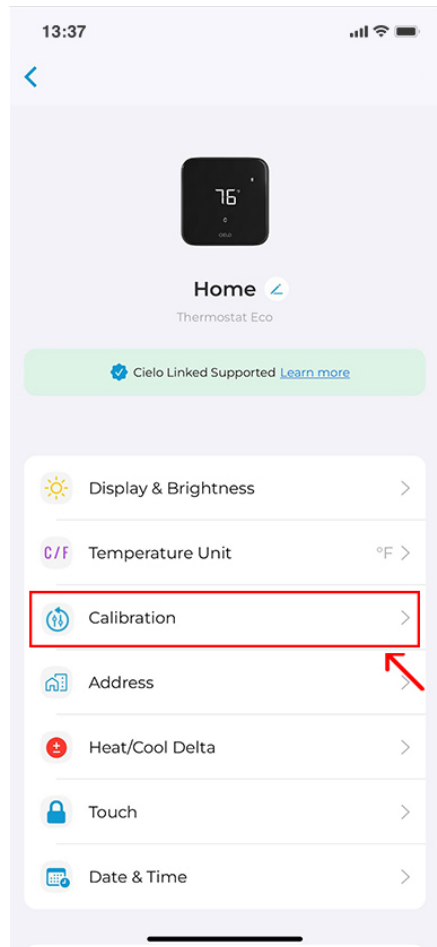
Step 1



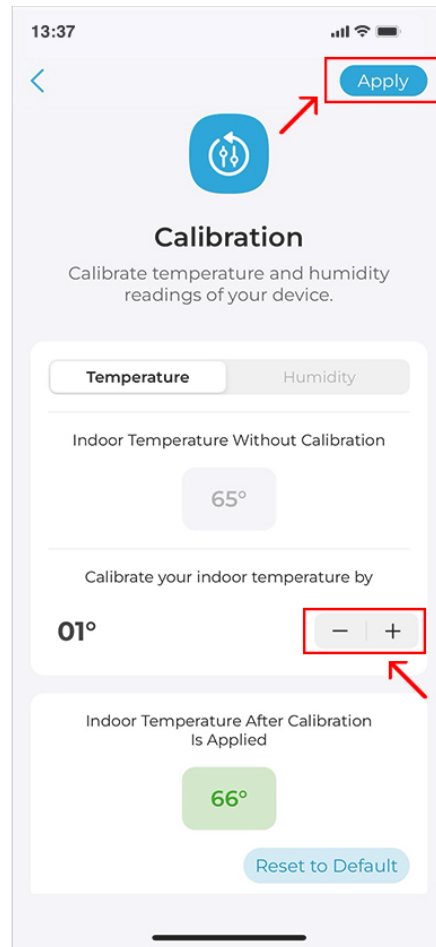
Step 2

Step 3: Tap on 'Calibration'.

Step 4: Calibrate temperature by tapping the + or - sign. Tap on 'Save'.



Step 3

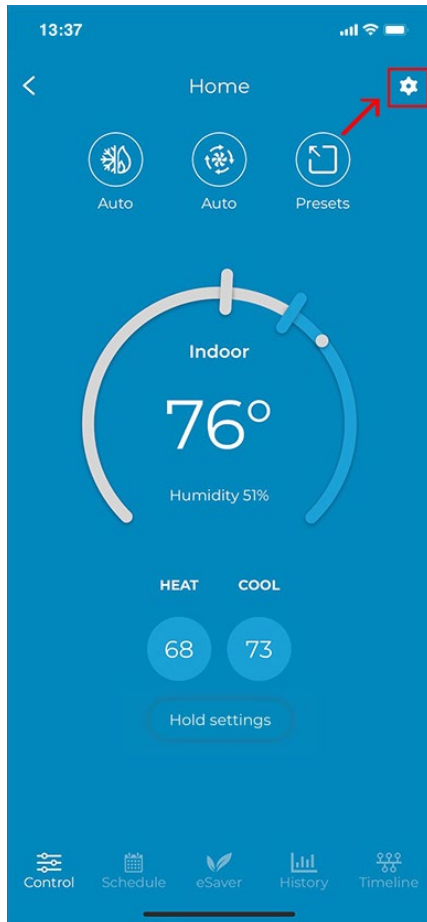


Step 4

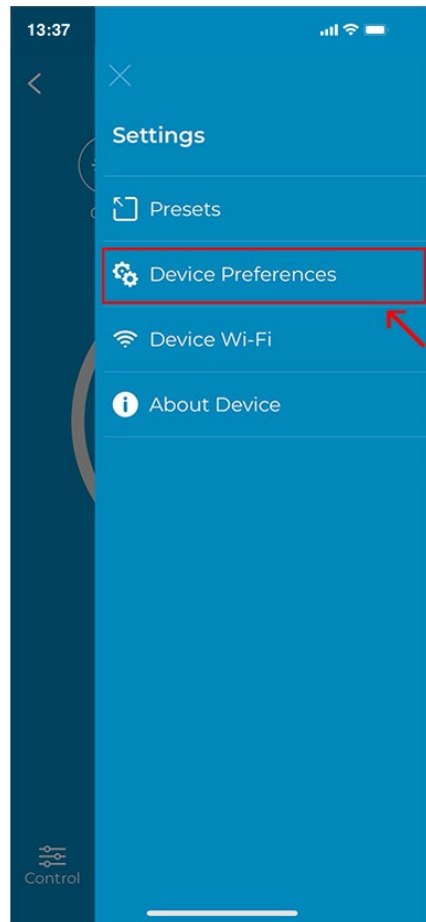
Display Indoor Humidity

Step 1: Go to settings by tapping the 'Settings' icon on the control screen.

Step 2: Tap on 'Device Preferences'.



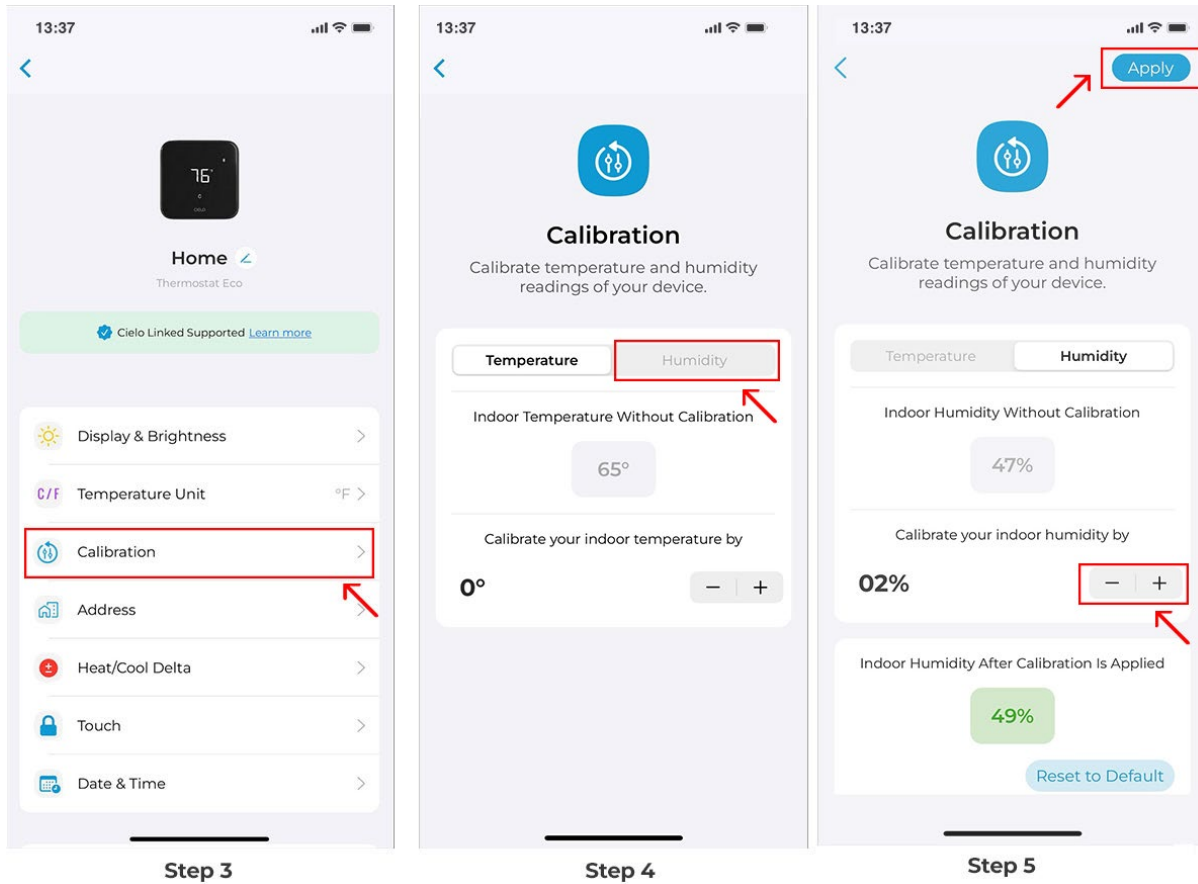
Step 1



Step 2

Step 3: Tap on 'Calibration'.

Step 4: Tap on 'Humidity'.

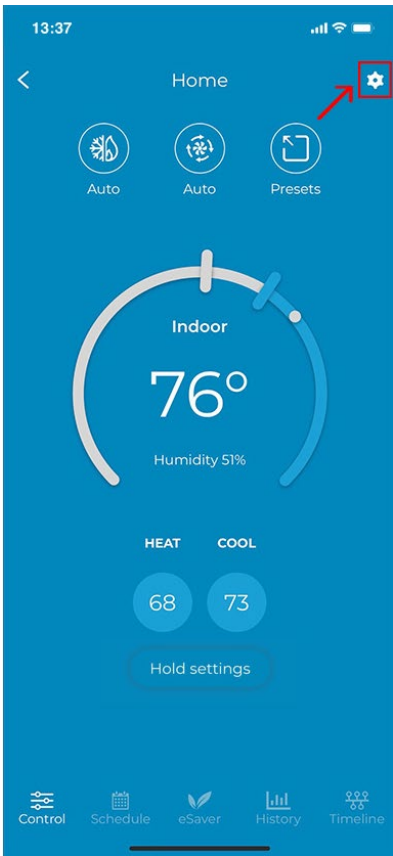


Adding Address

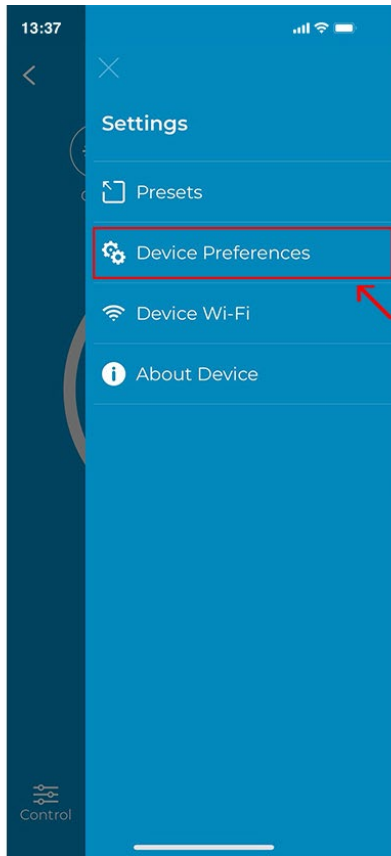
Step 1: Go to settings by tapping the 'Settings' icon on the control screen.

Step 2: Tap on 'Device Preferences'.

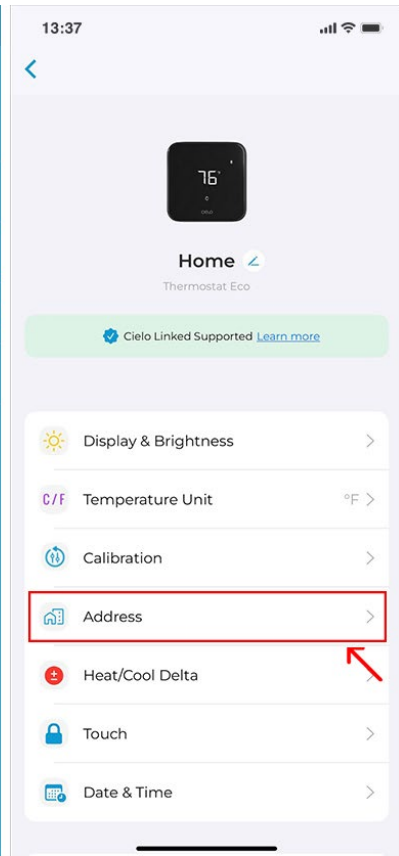
Step 3: Tap on 'Address'.



Step 1



Step 2

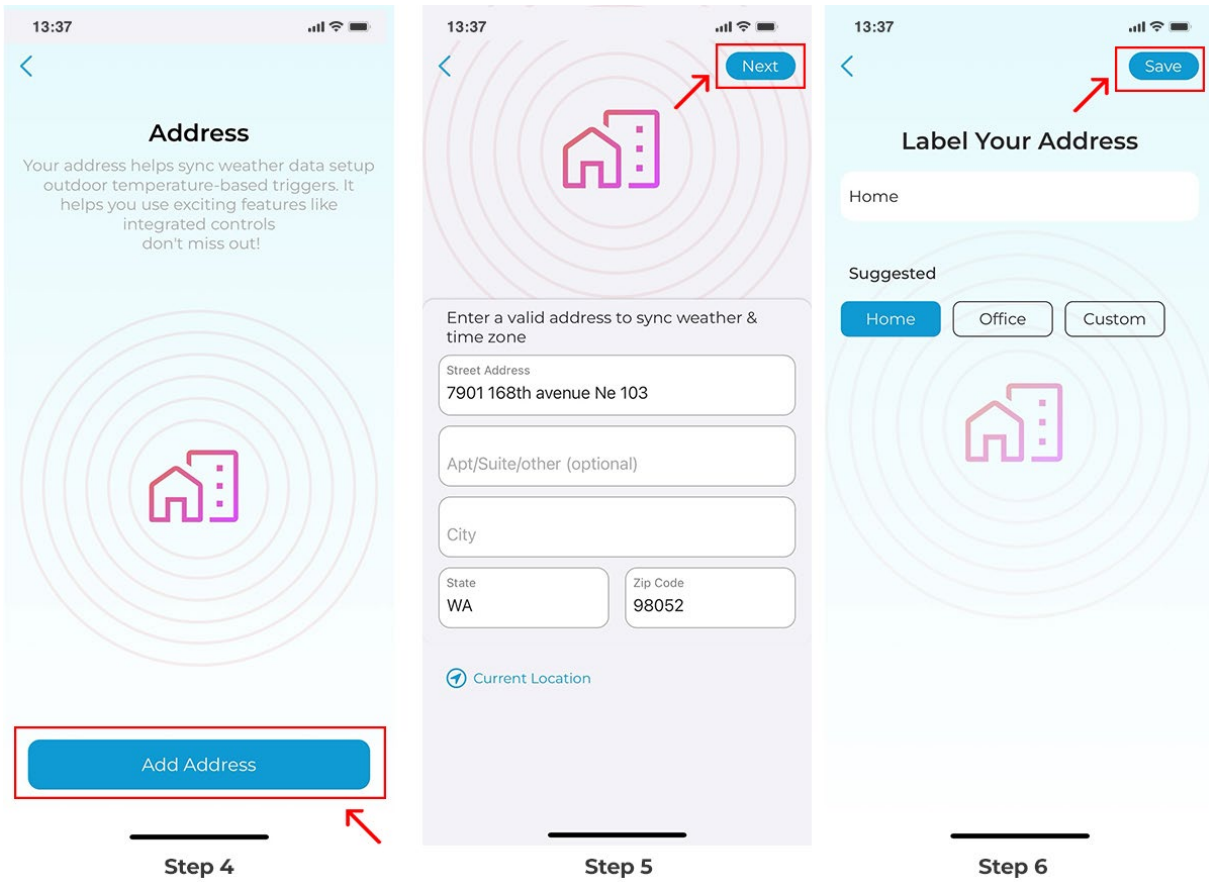


Step 3

Step 4: Tap on 'Begin'.

Step 5: Enter your address and tap on 'Next'.

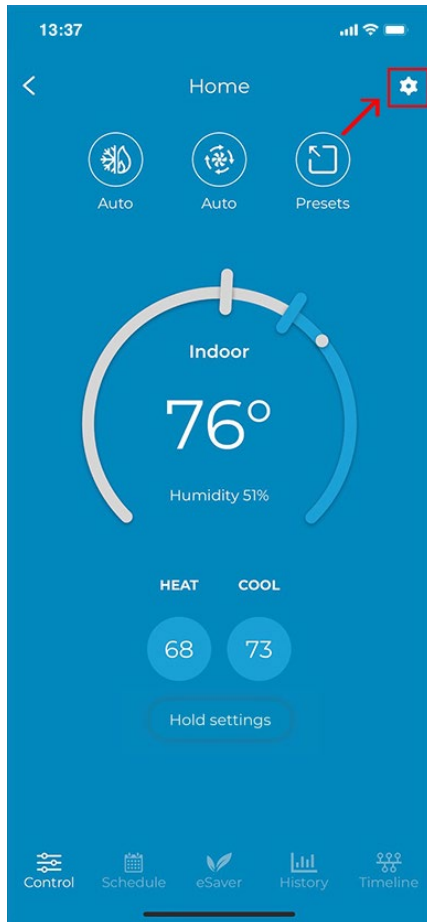
Step 6: Add a label to your address, and tap on 'Done'.



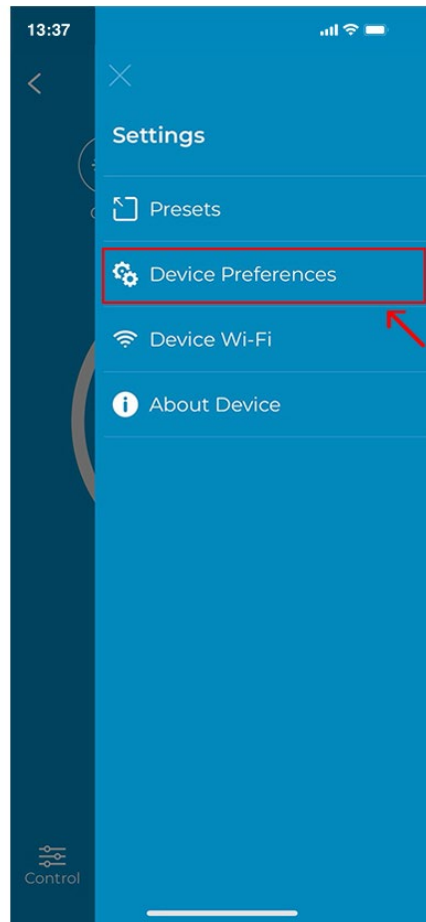
Set heat/Cool Delta (Set your desired minimum heating and cooling temperature difference in Auto mode):

Step 1: Go to settings by tapping the 'Settings' icon on the control screen.

Step 2: Tap on 'Device Preferences'.



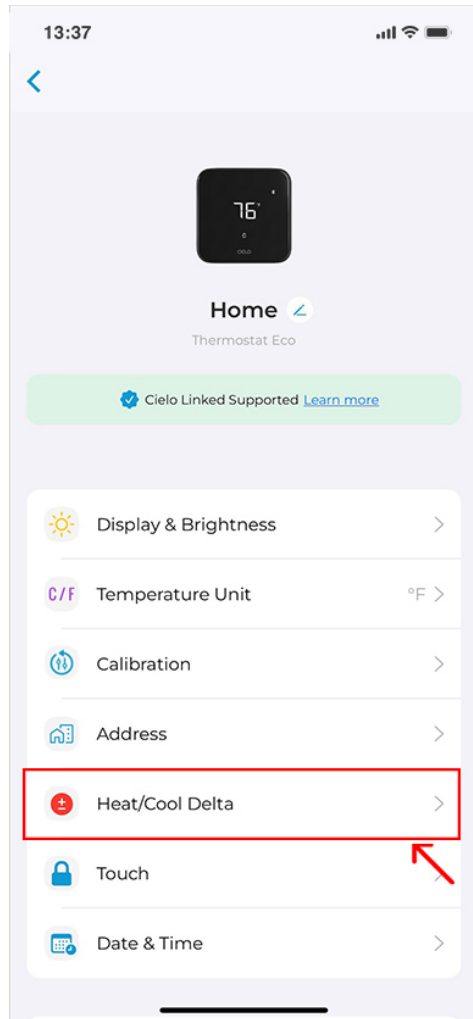
Step 1



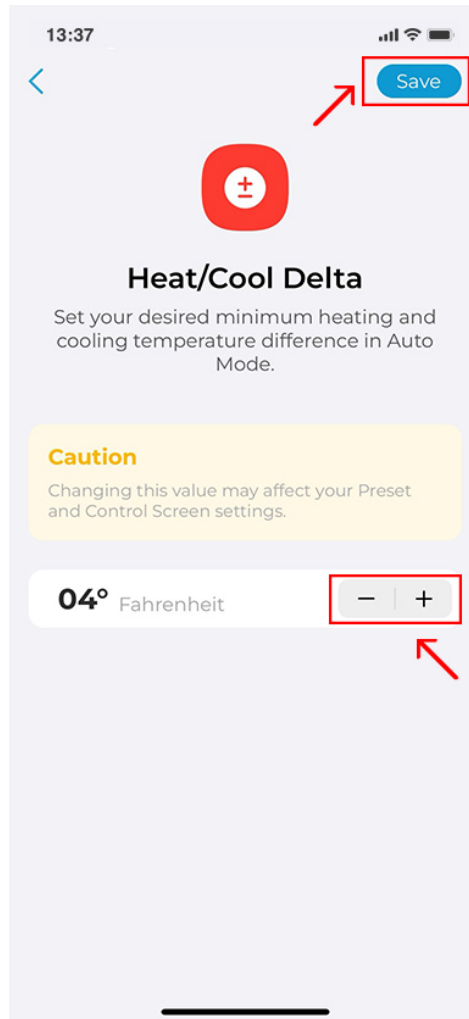
Step 2

Step 3: Tap on 'Heat/Cool/Delta'.

Step 4: Use the + or - sign to adjust your preferred temperature difference. Tap on 'Save'.



Step 3

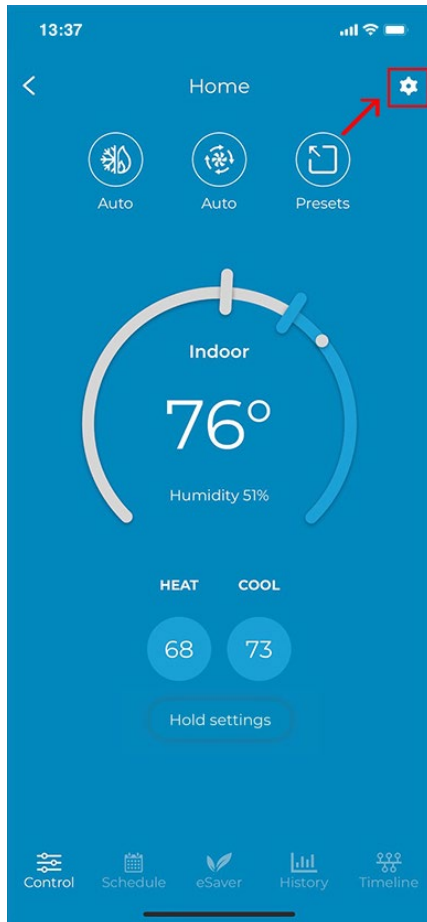


Step 4

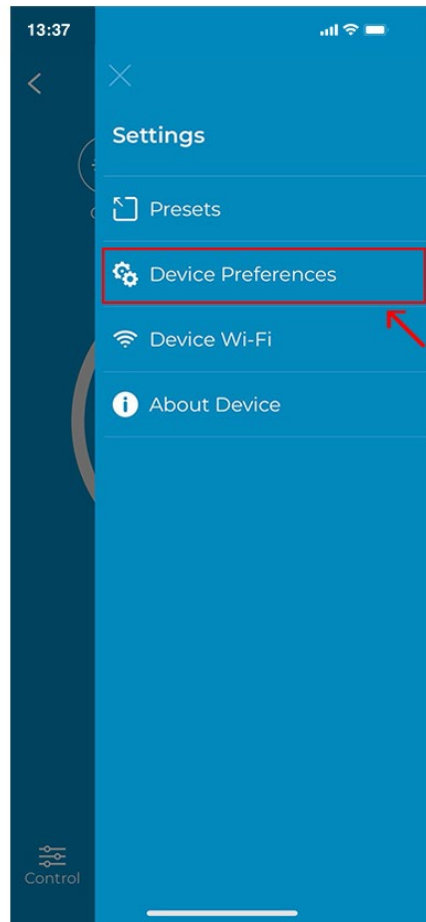
Enabling/Disabling Thermostat's Touch Screen

Step 1: Go to settings by tapping the 'Settings' icon on the control screen.

Step 2: Tap on 'Device Preferences'.



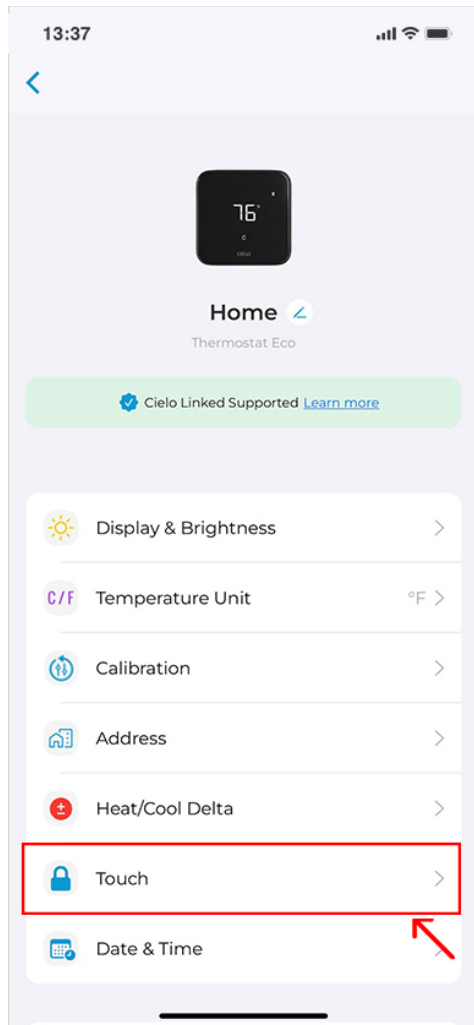
Step 1



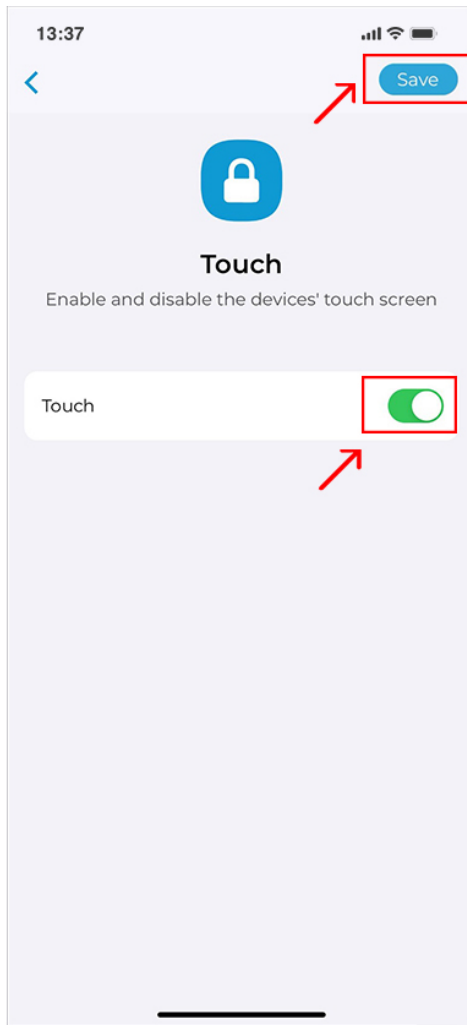
Step 2

Step 3: Tap on 'Touch'.

Step 4: Use the toggle to turn off / turn on the thermostat's touch screen. Tap on 'Save'.



Step 3

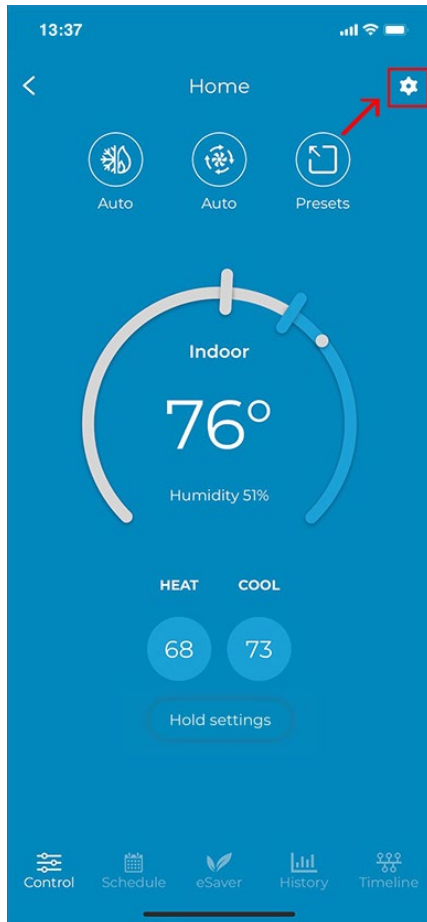


Step 4

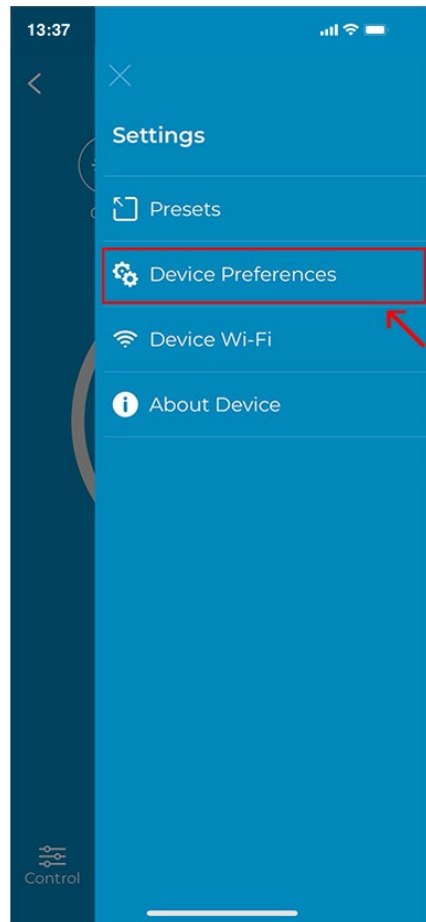
Changing Time Format

Step 1: Go to settings by tapping the 'Settings' icon on the control screen.

Step 2: Tap on 'Device Preferences'.



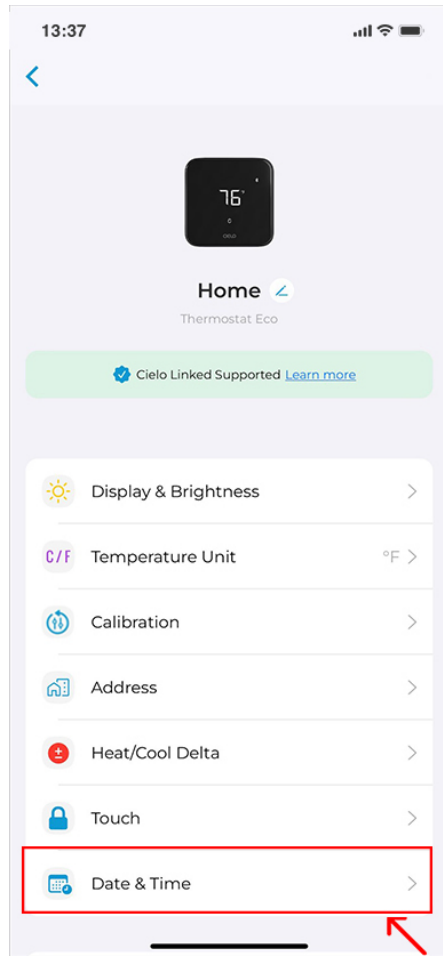
Step 1



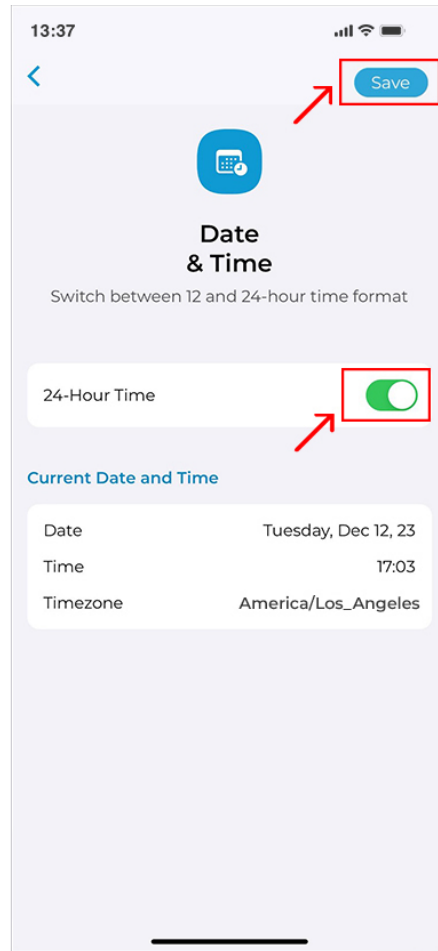
Step 2

Step 3: Tap on 'Date & Time'.

Step 4: Use the toggle to change the time format between 12 to 24 hours and vice versa. Tap on 'Save'.



Step 3

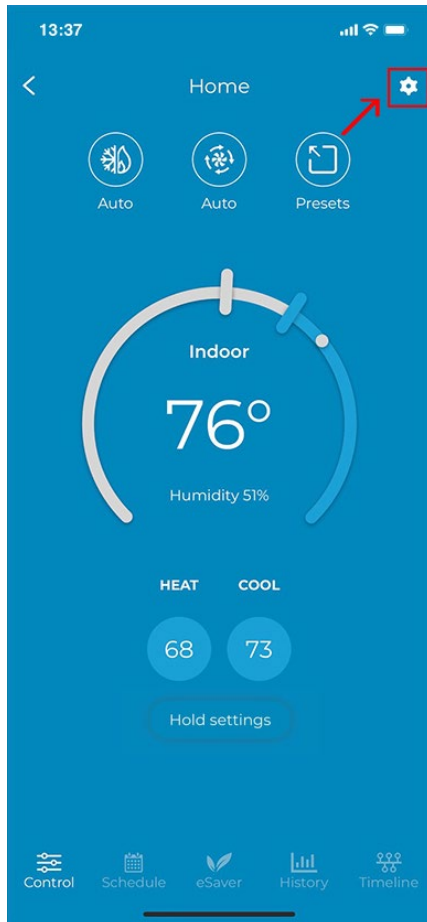


Step 4

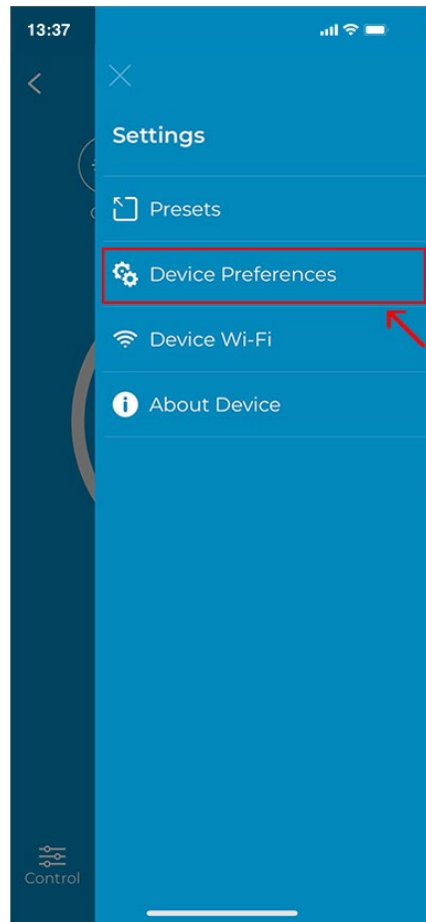
Checking Your Currently Configured HVAC Equipment:

Step 1: Go to settings by tapping the 'Settings' icon on the control screen.

Step 2: Tap on 'Device Preferences'.



Step 1



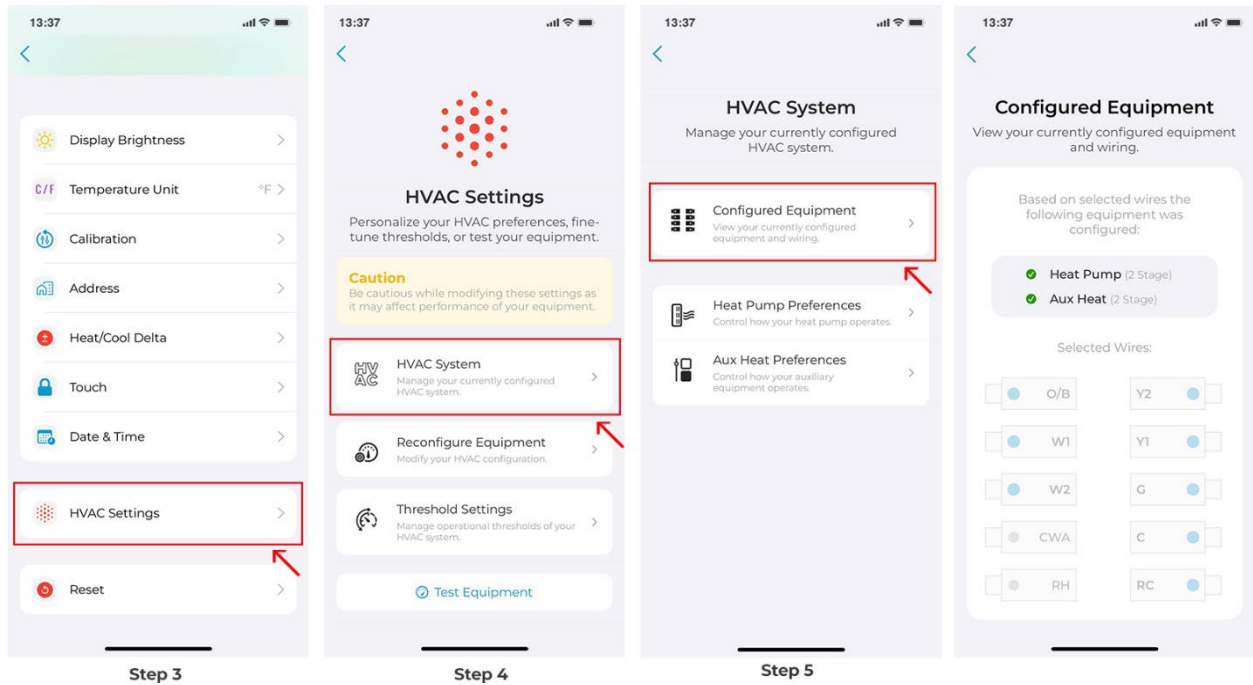
Step 2

Step 3: Tap on 'HVAC Settings'.

Step 4: Tap on 'HVAC System'.

Step 5: Tap on 'Configured Equipment'

You can check your currently configured HVAC equipment.

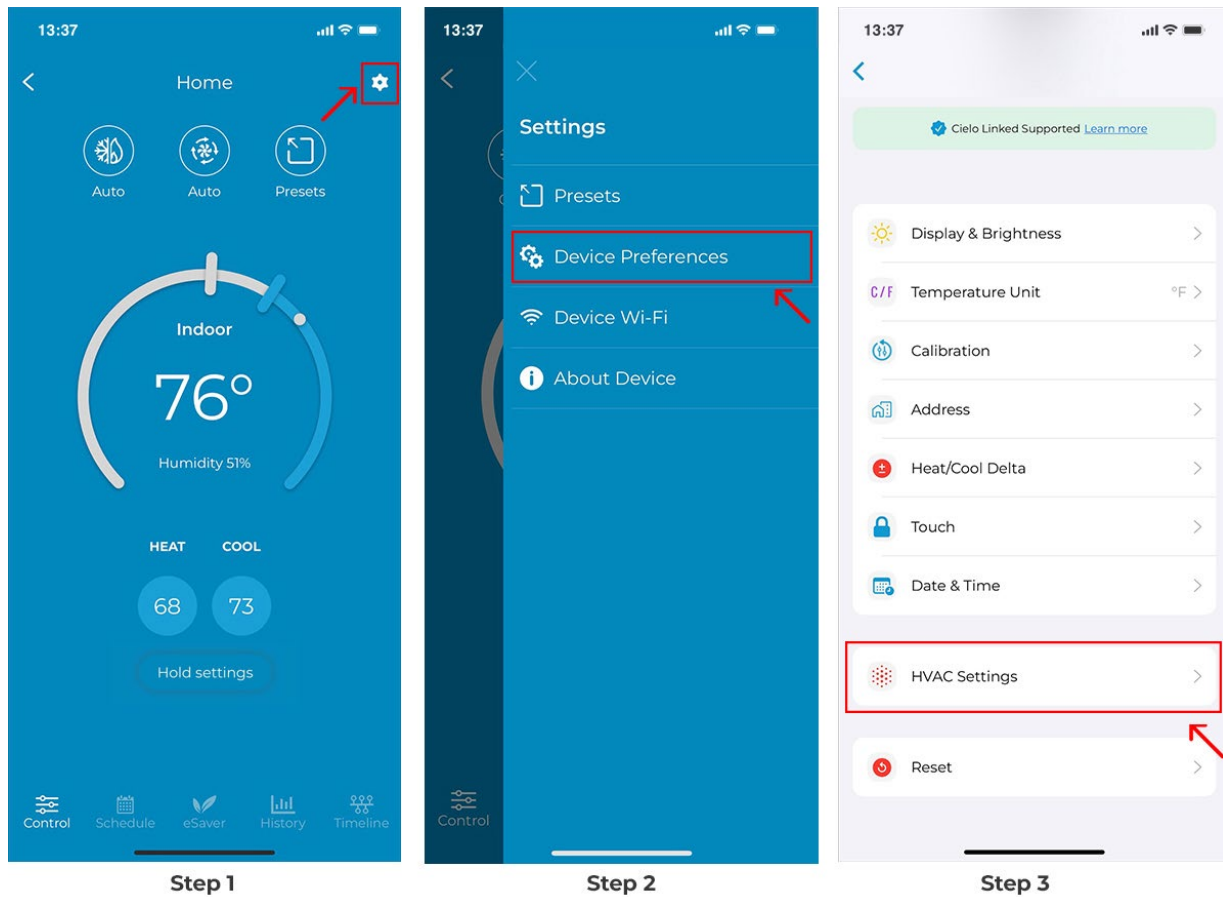


Changing Your Equipment's Preferences

Step 1: Go to settings by tapping the 'Settings' icon on the control screen.

Step 2: Tap on 'Device Preferences'.

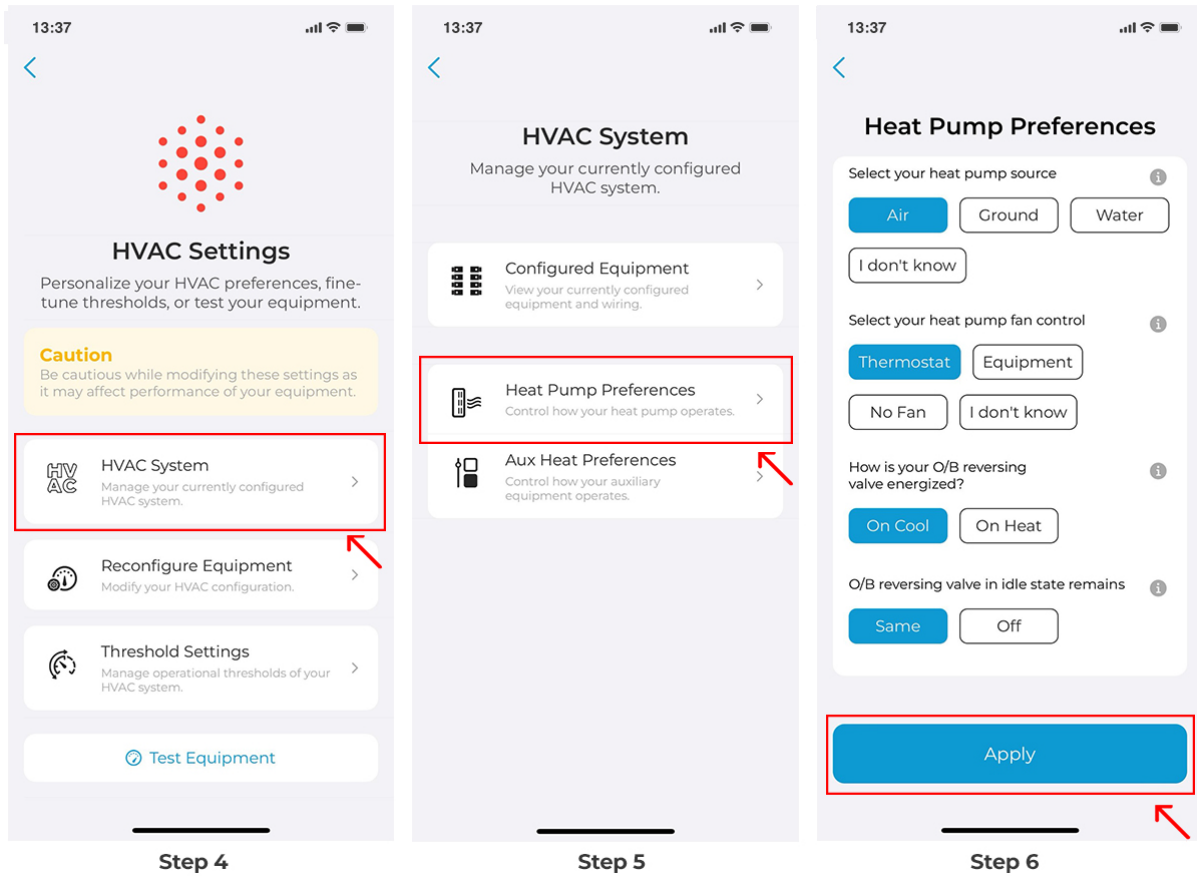
Step 3: Tap on 'HVAC Settings'.



Step 4: Tap on 'HVAC System'

Step 5: You'll see your configured equipment preferences here. In this case, heat pump & Aux. Select the equipment you want to change the preferences of.

Step 6: Make your desired changes and tap on 'Apply'. (Tap on the tooltip to learn about these settings)



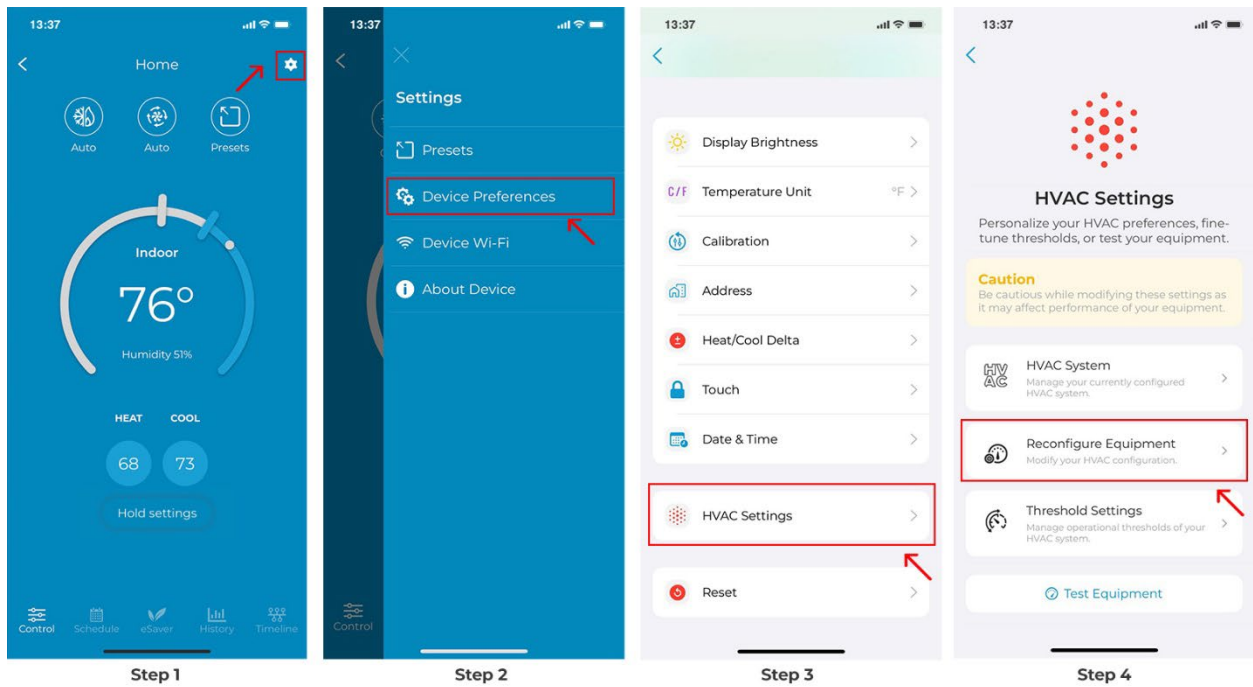
Changing Your Currently Configured HVAC Equipment

Step 1: Go to settings by tapping the 'Settings' icon on the control screen.

Step 2: Tap on 'Device Preferences'.

Step 3: Tap on 'HVAC Settings'.

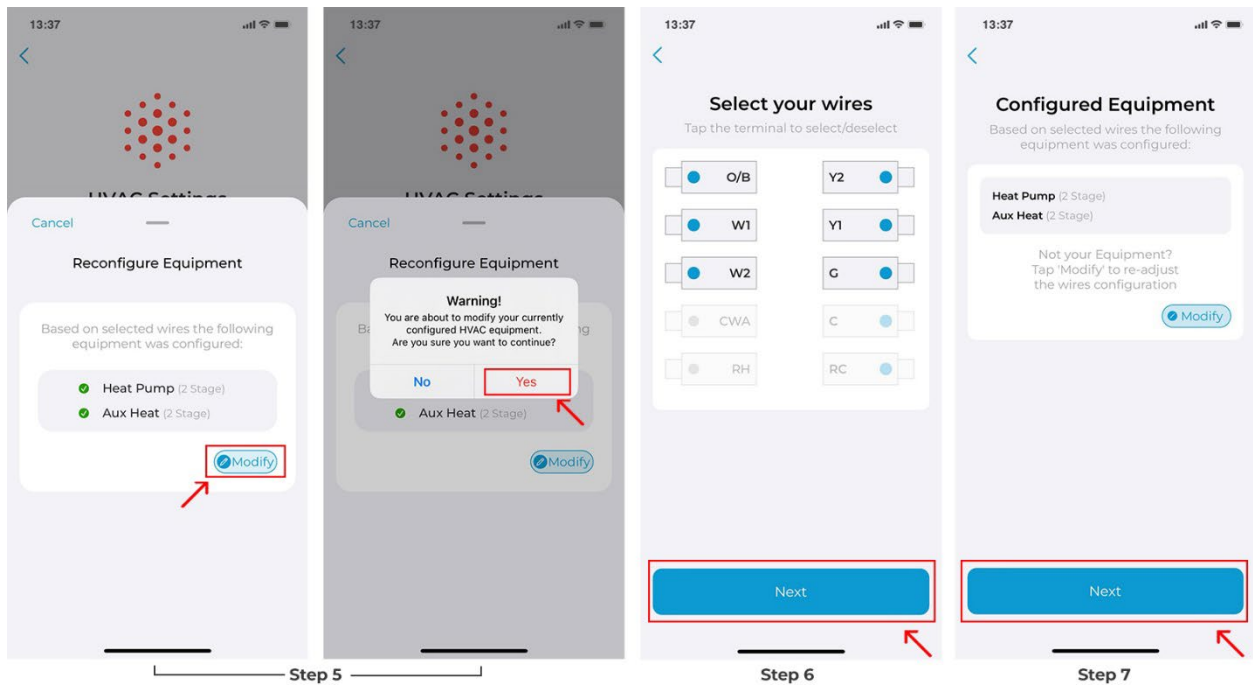
Step 4: Tap on 'Reconfigure Equipment'



Step 5: Tap on 'Modify' and select 'Yes'.

Step 6: Select the terminals that have wires connected to them. Then tap 'Next'.

Step 7: You will see your newly configured HVAC equipment. Tap 'Next'.

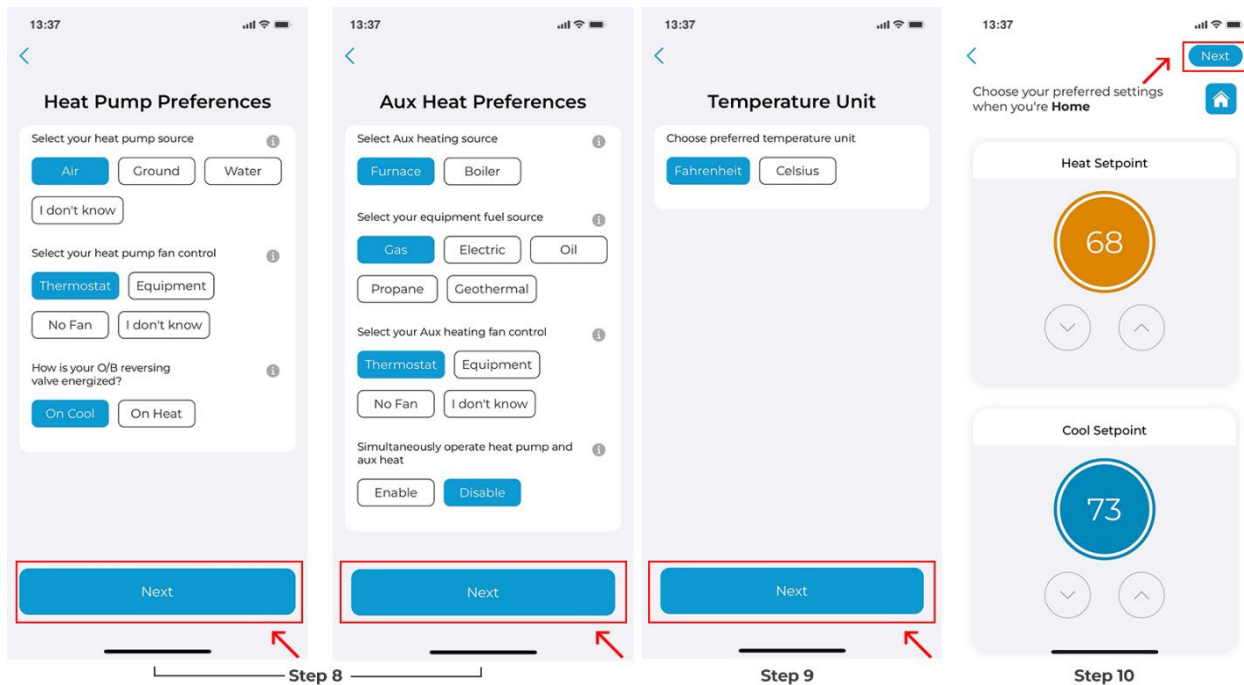


Step 8: Based on your wire selection, this step requires you to select your heating source and determine how you want your system to work. Tap on 'Next' after you have configured these settings.

Step 9: Choose your preferred temperature unit and tap 'Next'.

Step 10: Personalize your desired comfort settings for Home, Away, and Sleep.

Your new HVAC equipment is now configured.

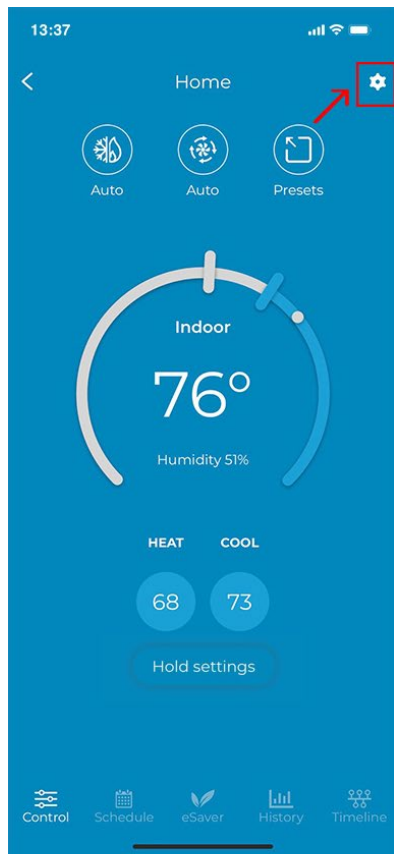


Changing Threshold Settings

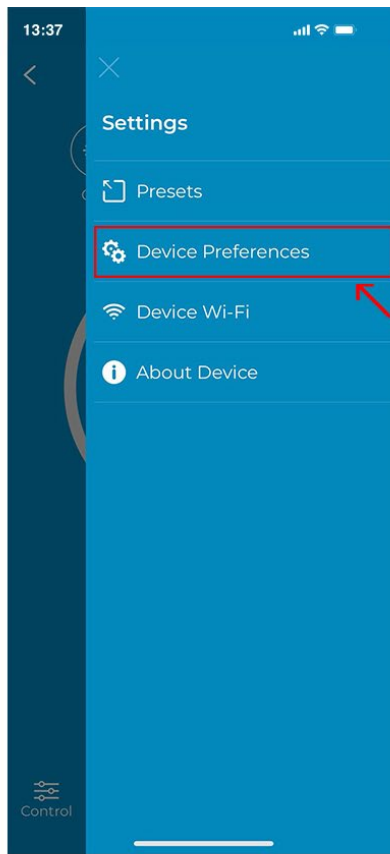
Step 1: Go to settings by tapping the 'Settings' icon on the control screen.

Step 2: Tap on 'Device Preferences'.

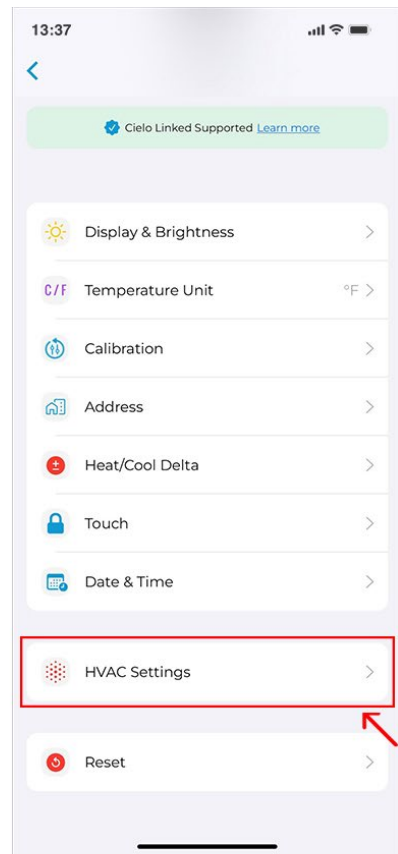
Step 3: Tap on 'HVAC Settings'.



Step 1



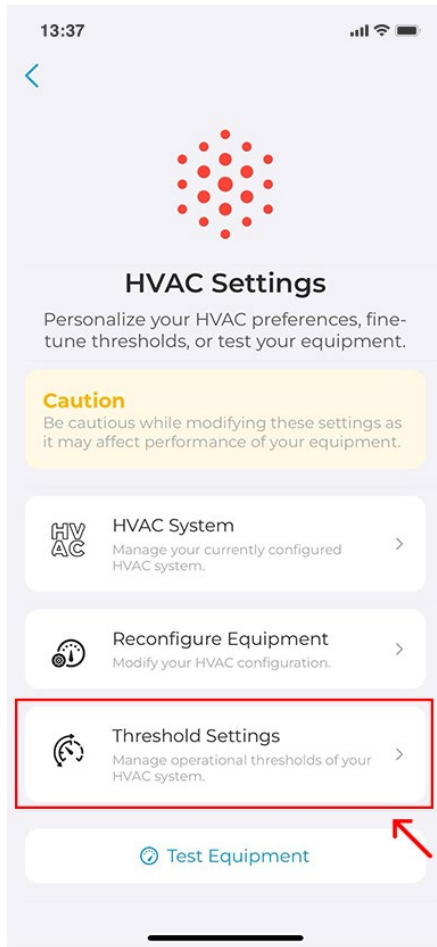
Step 2



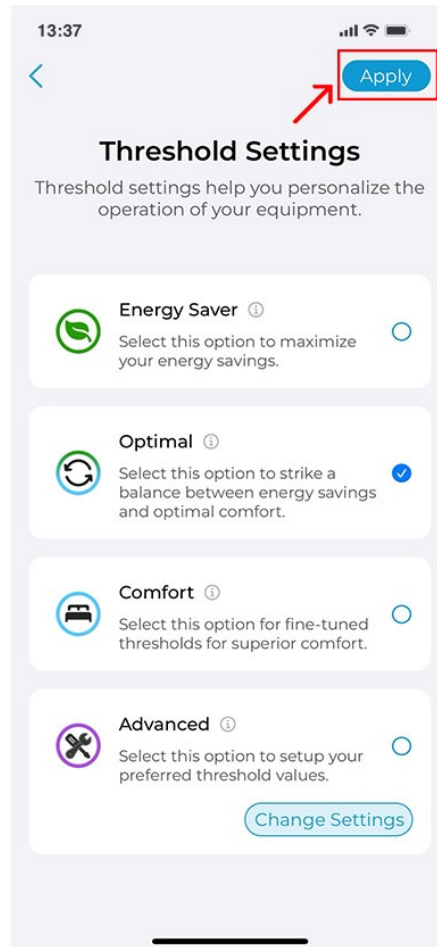
Step 3

Step 4: Tap on 'Threshold Settings'.

Step 5: You can choose from the premade threshold templates (energy saver, optimal, or comfort) or select 'Advanced' to change settings according to your own preferences.

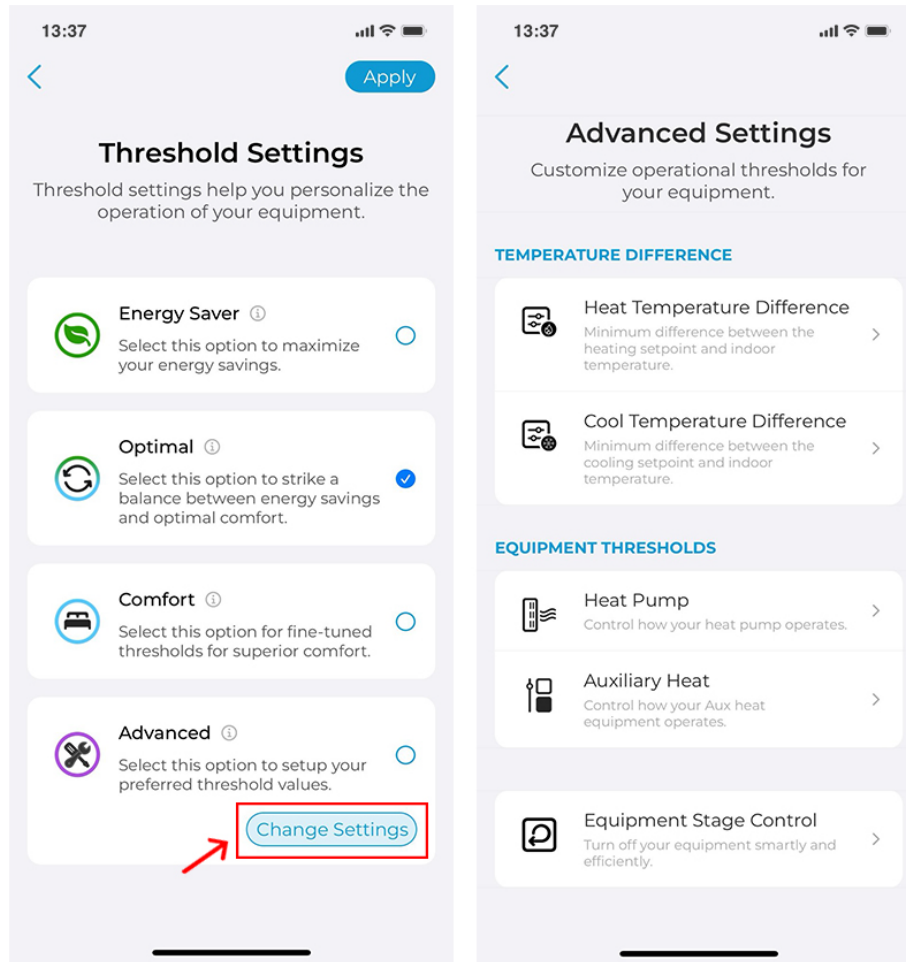


Step 4



Step 5

Advanced Threshold Settings



Temperature Difference:

- **Heat Temperature Difference:** Minimum difference between the heating setpoint and indoor temperature.
- **Cool Temperature Difference:** Minimum difference between the cooling setpoint and indoor temperature.

Equipment Thresholds

-Temperature Thresholds:

1- Temperature Difference Stage 2:

This is the difference between your indoor and setpoint temperature before stage 2 is activated to help achieve the setpoint. Setting a higher number will result in more savings because stage 2 may not be activated frequently.

In normal weather conditions, HVAC systems can efficiently maintain indoor temperature using stage 1 only and save you energy.

2- Minimum & Maximum Outdoor Temperature:

If the outdoor temperature falls below a minimum threshold, the heat pump will turn off and

switch to auxiliary heating. When the outdoor temperature goes above the maximum threshold, auxiliary heating will stop, and the heat pump will start running again.

Operational Timers:

1- Maximum Runtime For Stage 1:

The maximum runtime for stage 1 before stage 2 is activated to achieve the temperature setpoint.

2- Minimum Off Time:

The minimum OFF time of the heating or cooling system before the thermostat turns it ON again. (A minimum value of 5 minutes is recommended to prevent the system from short cycling.

3- Minimum On Time:

The minimum ON time of the heating or cooling system before the thermostat turns it OFF again. (A minimum value of 5 minutes is recommended to prevent the system from short cycling.

4- Heating Dissipation Time:

Time for which the fan of your HVAC system will run after the heating has been turned off. This ensures that the hot air left in the ducts is blown into the room to maximize the use of generated heat.

5- Cooling Dissipation Time:

Time for which the fan of your HVAC system will run after the cooling has been turned off. This ensures that any remaining cool air in the ducts is circulated into the room to maximize the efficiency of the cooling cycle.

Equipment Stage Control:

Stage Control

ON - Stage 2 of your equipment automatically turns off as your home temperature approaches your setpoint, and stage 1 can efficiently reach your setpoint on its own.

OFF - Your equipment will keep on running in stage 2 until your setpoint is achieved.

Aux to Heat Pump

ON - Auxiliary heat is automatically turned off as your home temperature approaches the setpoint, while the heat pump operates to attain your desired temperature.

OFF - Auxiliary heat keeps on running until your setpoint is achieved.

Aux Control

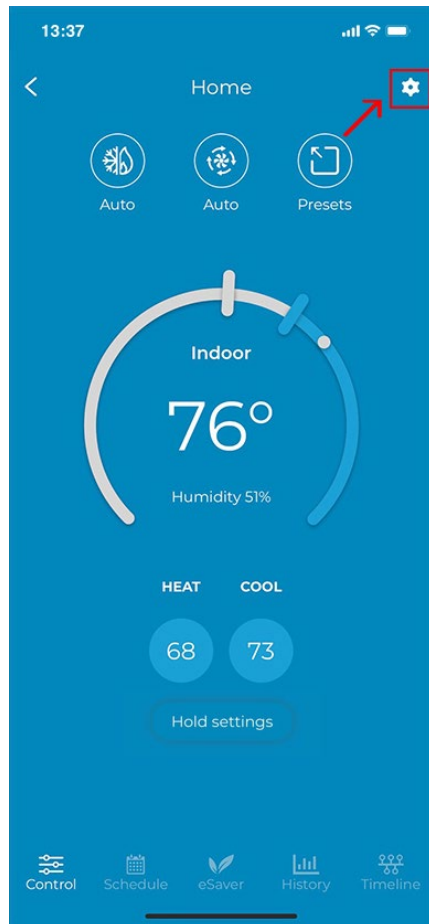
ON - Stage 2 of your auxiliary equipment automatically turns off as your home temperature approaches the setpoint, and stage 1 can efficiently reach your setpoint on its own.
OFF - Stage 2 of auxiliary equipment keeps running until your setpoint is achieved.

Resetting Your Thermostat

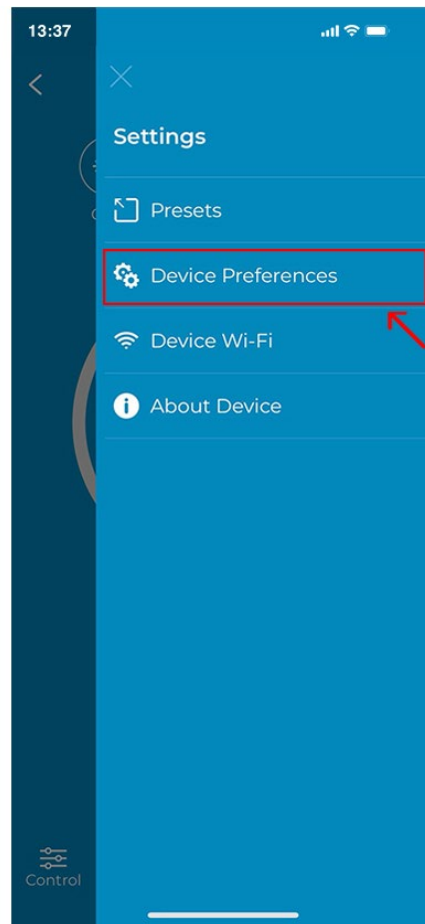
- Reset Preferences:

Step 1: Go to settings by tapping the 'Settings' icon on the control screen.

Step 2: Tap on 'Device Preferences'.



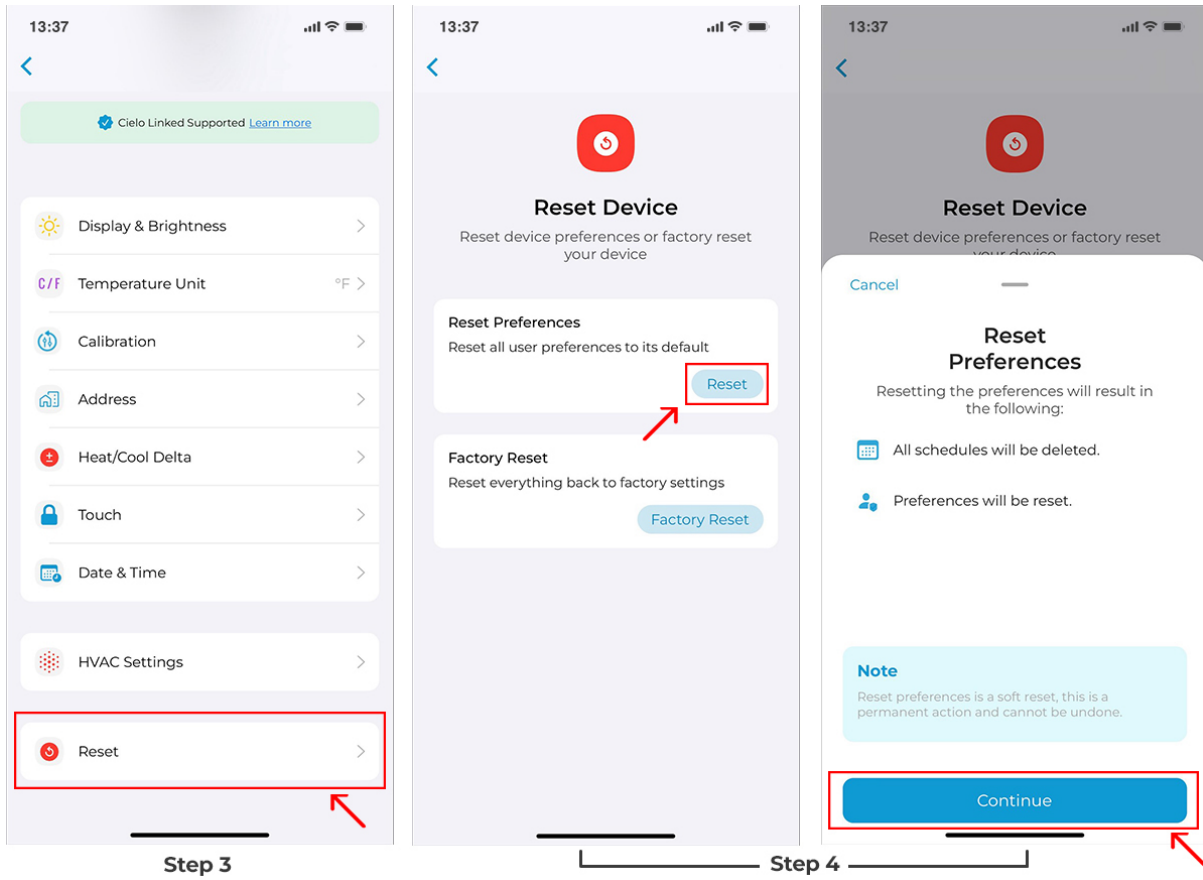
Step 1



Step 2

Step 3: Tap on 'Reset'.

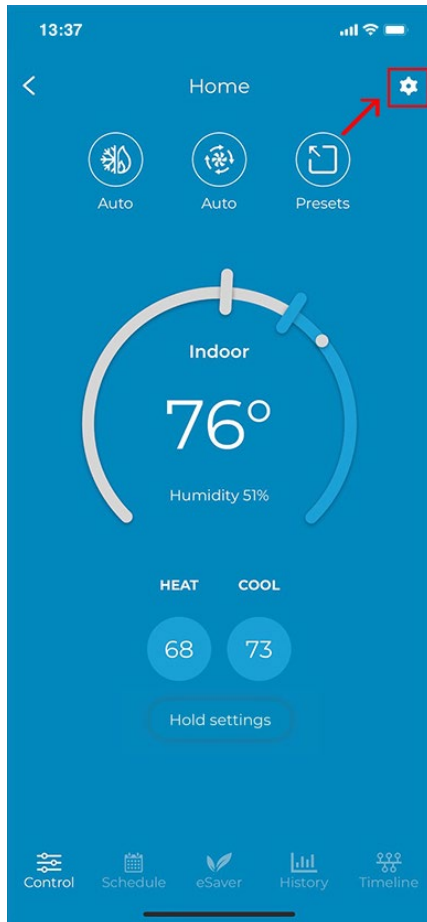
Step 4: Tap on 'Reset', and then tap on 'Continue'.



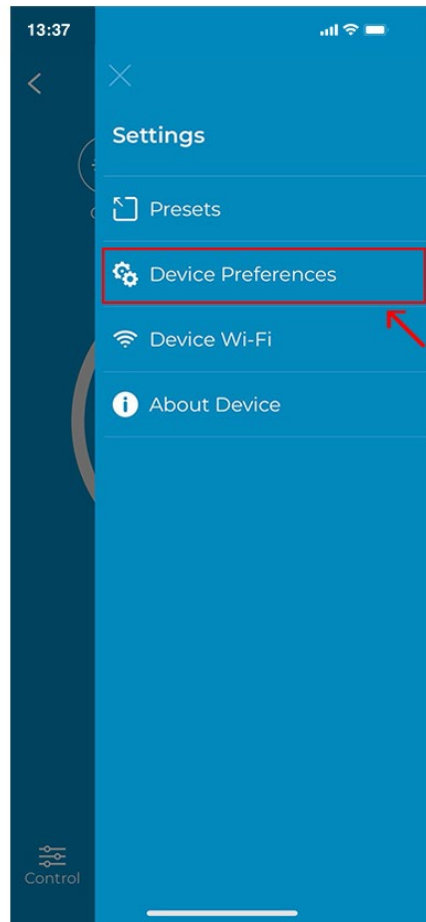
- Factory Reset

Step 1: Go to settings by tapping the 'Settings' icon on the control screen.

Step 2: Tap on 'Device Preferences'.



Step 1



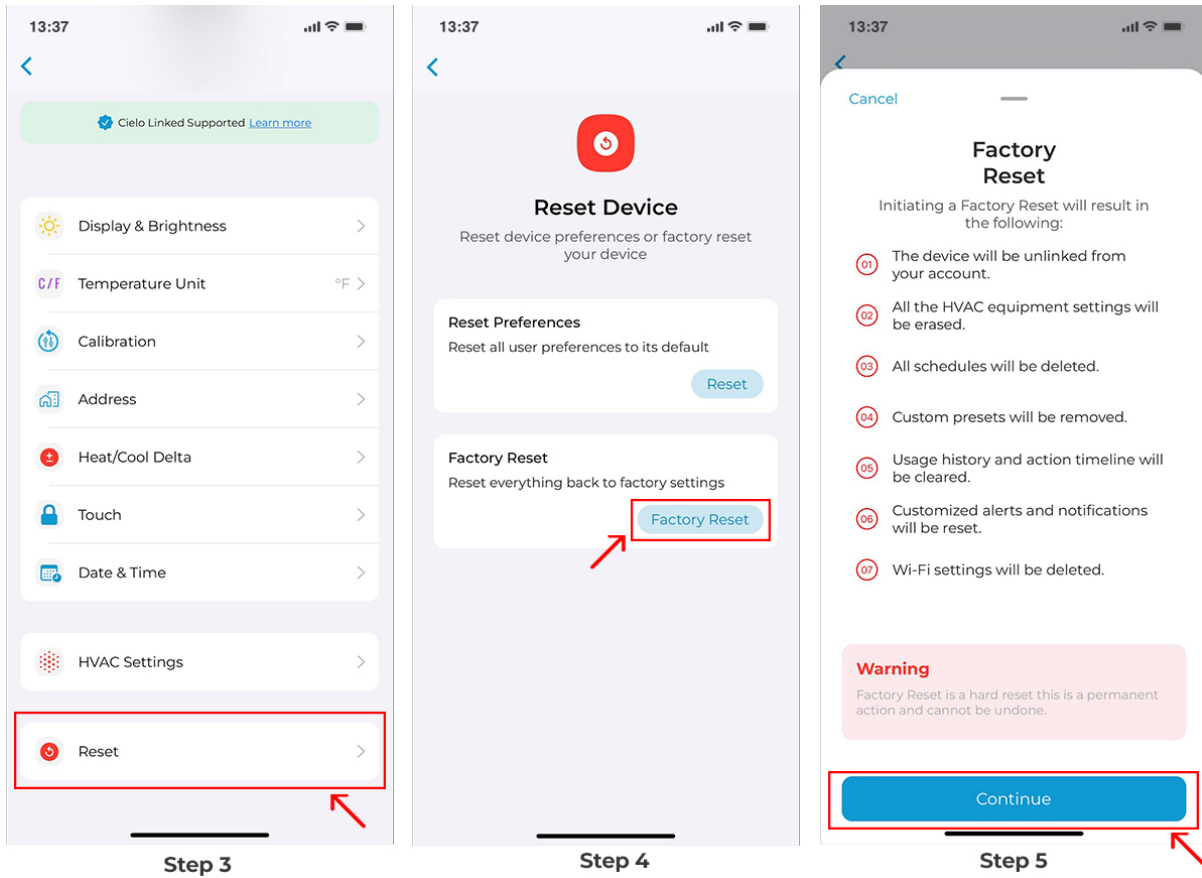
Step 2

Step 3: Tap on 'Reset'.

Step 4: Tap on 'Factory Reset'.

Step 5: Tap on 'Continue'.

Note: Factory Reset will delete all your schedules, preferences, HVAC equipment settings, and remove the thermostat from your account.

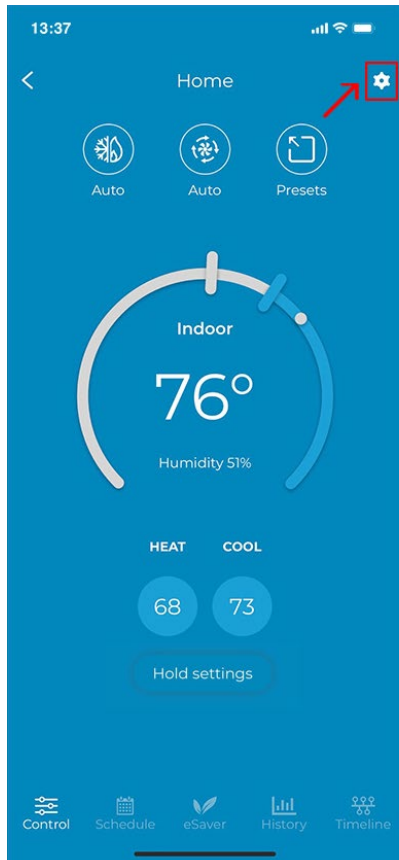


Changing the Wi-Fi Network of Your Thermostat

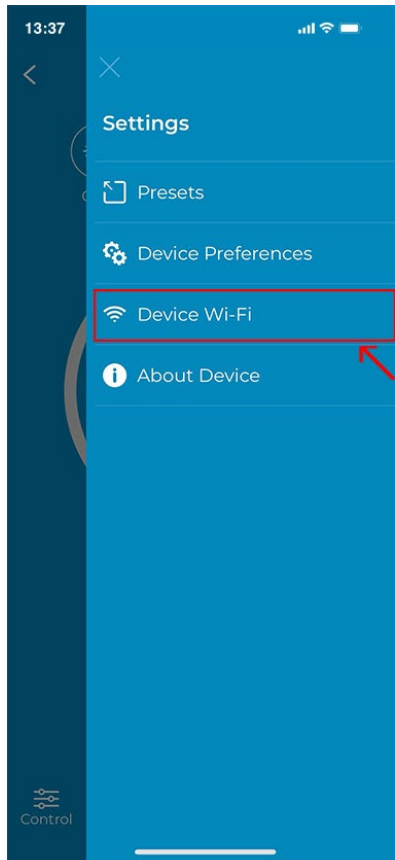
Step 1: Go to settings by tapping the 'Settings' icon on the control screen.

Step 2: Tap on 'Device Wi-Fi'.

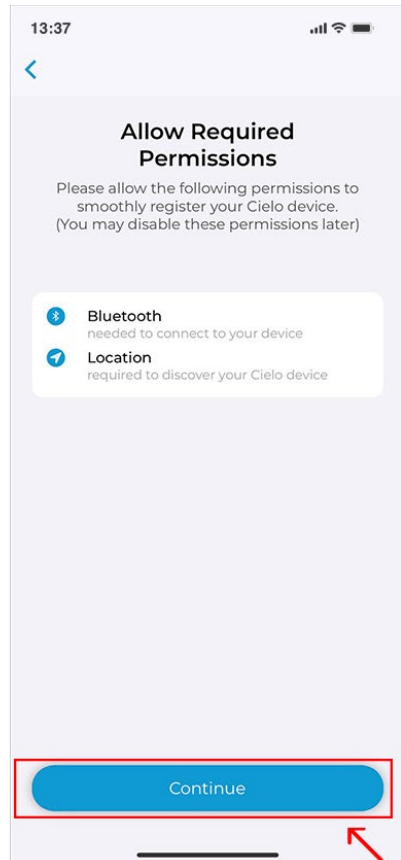
Step 3: Please give the required permissions and tap on 'Continue'.



Step 1

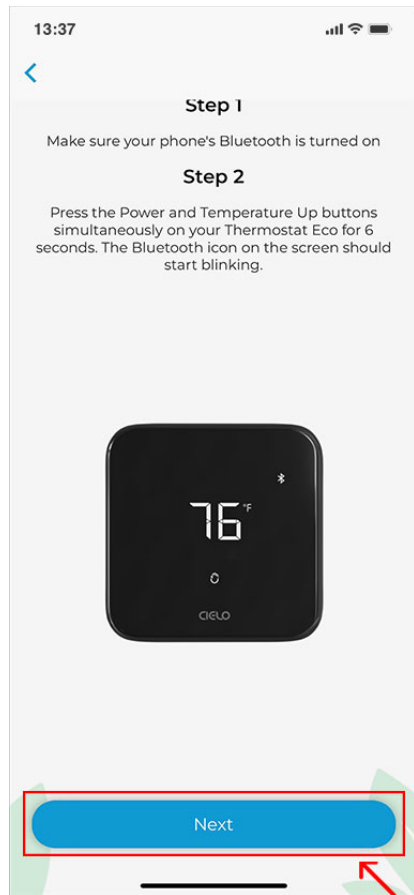


Step 2

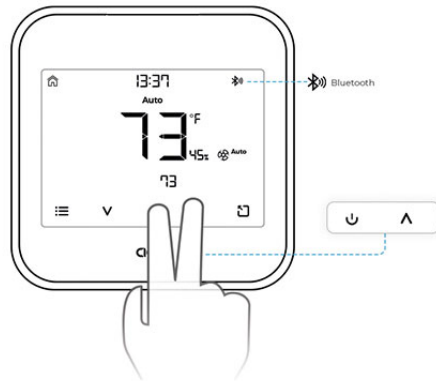


Step 3

Step 4: Press the 'Hold Settings' and 'Temperature Up' buttons simultaneously on your thermostat for 6 seconds. The Bluetooth icon on the screen should start blinking. Tap on 'Next'.

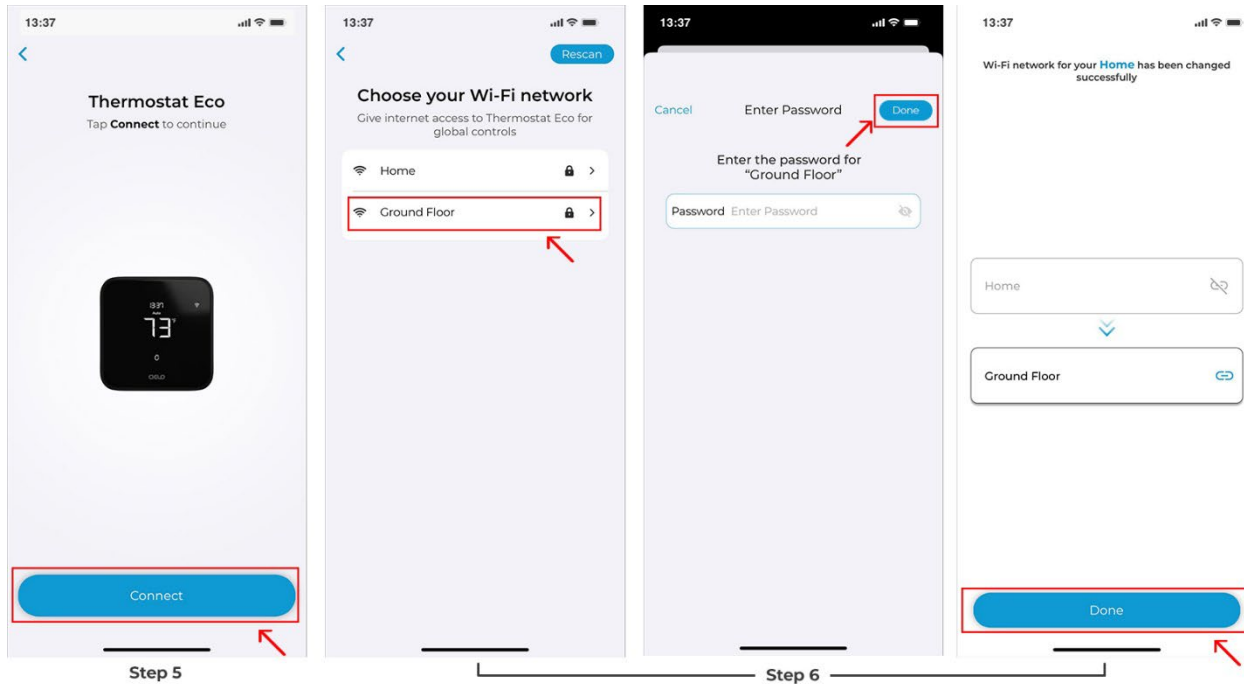


Step 4



Step 5: Your thermostat will appear on the screen. Tap on 'Connect'.

Step 6: Choose your desired internet connection. Enter your password to connect the smart thermostat to the internet.

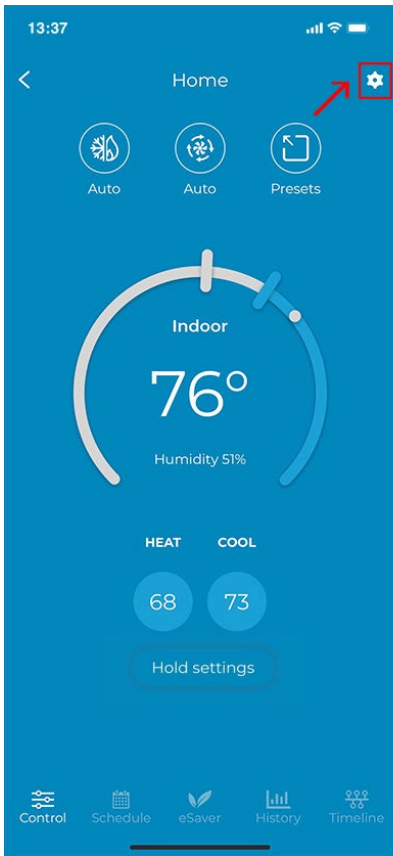


Checking Details of Your Thermostat

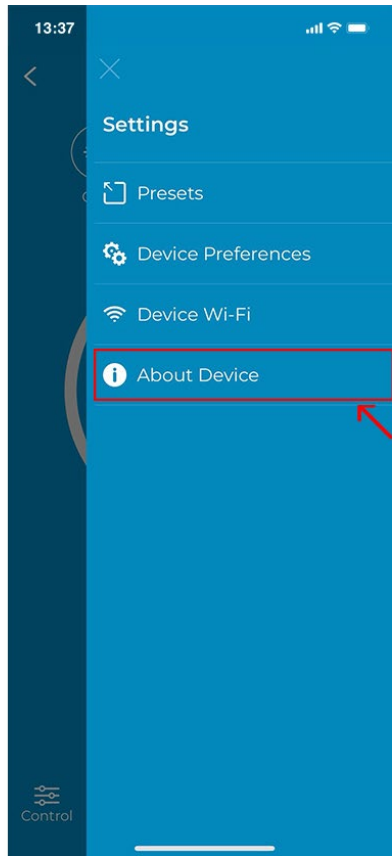
Step 1: Go to settings by tapping the 'Settings' icon on the control screen.

Step 2: Tap on 'About Device'

You can see the device details here.



Step 1



Step 2

