



## Submittal Data Sheet

R-32 --- 1.5-Ton Wall Mounted Daikin OTERRA Heat Pump System  
FTXF18BVJU9-RXF18BVJU9

### FEATURES

- Built in WI-FI
- Daikin Swing Compressor
- Indoor Quiet Operation
- Included Handheld Remote
- Titanium Apatite Air-Purifying Filter
- Anti-corrosion Treatment of Outdoor Heat Exchanger

### BENEFITS

- R-32 Easy, Proven, Efficient, Available
- Precharged Line set - 49 ft
- Cooling Operation Range - 50-118F for 9K/12K 50-122F for 18/24K
- 12 Year Parts and Compressor Registered Residential Warranty
- 5 year Parts and Compressor Commercial Warranty
- Facilities cooling to -4F- Please refer to Installation Manual

### INDOOR UNIT



### OUTDOOR UNIT





## Submittal Data Sheet

R-32 --- 1.5-Ton Wall Mounted Daikin OTERRA Heat Pump System

FTXF18BVJU9-RXF18BVJU9

### SYSTEM PERFORMANCE

Indoor Unit Model No.	FTXF18BVJU9	Indoor Unit Name:	R-32 --- 1.5- Ton, Heat Pump, Wall Mounted IDU Daikin OTERRA
Outdoor Unit Model No.	RXF18BVJU9	Outdoor Unit Name:	R-32-- Daikin OTERRA 1.5 Ton ODU Heatpump
Rated Cooling Capacity (Btu/hr):	18,000	Rated Cooling Conditions:	Indoor (°F DB/WB): 80 / 67 Ambient (°F DB/WB): 95 / 75
Sensible Capacity (Btu/hr):	14,590	Rated Piping Length(ft):	25
Max/Min Cooling Capacity (Btu/hr):	22,000 / 6,900	Rated Height Difference (ft):	0.00
Cooling Input Power (kW):	1.800		
SEER2 (Non-Ducted/Ducted):	21.00 /	HSPF2 (Non-Ducted/Ducted):	9.6 /
EER2 (Non-Ducted/Ducted):	12.00 /		
Rated Heating Capacity (Btu/hr):	21,600	Rated Heating Conditions:	Indoor (°F DB/WB): 70 / 60 Ambient (°F DB/WB): 47 / 43

### SYSTEM DETAILS

Refrigerant Type:	R-32	Cooling Operation Range (°F DB):	50 - 122
Holding Refrigerant Charge (lbs):	2.45	Heating Operation Range (°F WB):	5 - 65
Additional Charge (oz/ft):	0.22	Max. Pipe Length (Vertical) (ft):	66
Pre-charge Piping (Length) (ft):	49	Cooling Range w/Baffle (°F DB):	-4 - 122
Max. Pipe Length (Total) (ft):	99		
Max Height Separation (Ind to Ind ft):	0		



## Submittal Data Sheet

R-32 --- 1.5-Ton Wall Mounted Daikin OTERRA Heat Pump System

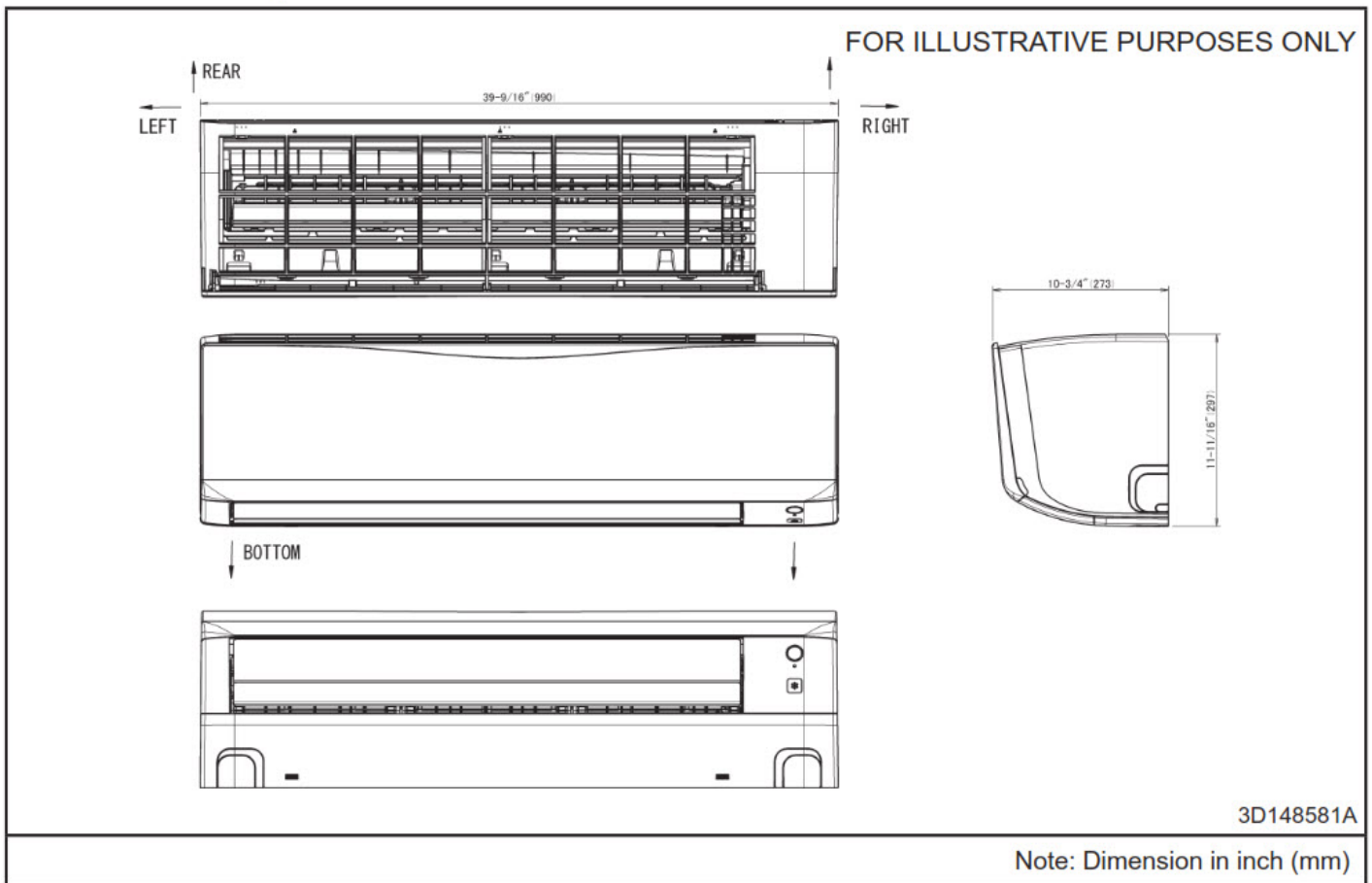
FTXF18BVJU9-RXF18BVJU9

### INDOOR UNIT DETAILS

Power Supply (V/Hz/Ph):	208-230 / 60 / 1	Airflow Rate (H/M/L/SL) (CFM):	565/463/378/335
Power Supply Connections:	L1, L2, L3 Ground	Moisture Removal (Gal/hr):	
Min. Circuit Amps MCA (A):		Gas Pipe Connection (inch):	1/2
Max Overcurrent Protection (MOP) (A):		Liquid Pipe Connection (inch):	1/4
Dimensions (HxWxD) (in):	11-5/8 x 39-3/8 x 10-3/8	Condensate Connection (inch):	5/8
Net Weight (lb):	28	Sound Pressure (H/M/L/SL) (dBA):	48/43/37/33
Ext. Static Pressure (Rated/Max) (inWg):	/	Sound Power Level (dBA):	

### DIMENSIONAL DRAWING - INDOOR UNIT

Model : FTKF18/24A, FTXF18/24A





## Submittal Data Sheet

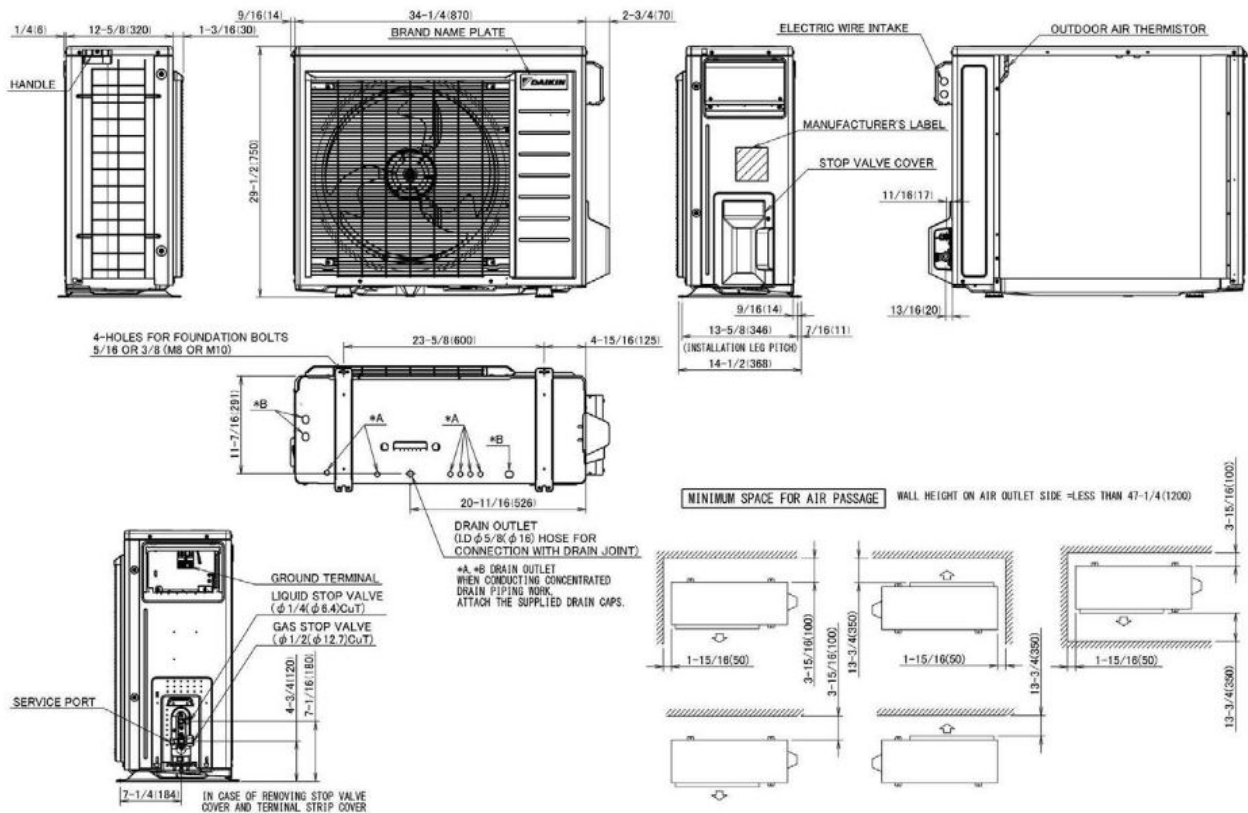
R-32 --- 1.5-Ton Wall Mounted Daikin OTERRA Heat Pump System  
FTXF18BVJU9-RXF18BVJU9

### OUTDOOR UNIT DETAILS

Power Supply (V/Hz/Ph):	208-230 / 60 / 1	Compressor Stage:	Inverter
Power Supply Connections:	L1,L2,L3, Ground	Capacity Control Range (%):	-
Min. Circuit Amps MCA (A):	21.4	Airflow Rate (H) (CFM):	2327
Max Overcurrent Protection (MOP) (A):	25	Gas Pipe Connection (inch):	1/2
Max Starting Current MSC(A):		Liquid Pipe Connection (inch):	1/4
Rated Load Amps RLA(A):		Sound Pressure (H) (dBA):	54
Dimensions (HxWxD) (in):	29-1/2 x 34-1/4 x 12-5/8	Sound Power Level (dBA):	
Net Weight (lb):	113		

### DIMENSIONAL DRAWING - OUTDOOR UNIT

#### RKF18BVJU9, RXF18BVJU9





## Submittal Data Sheet

R-32 --- 1.5-Ton Wall Mounted Daikin OTERRA Heat Pump System

FTXF18BVJU9-RXF18BVJU9

### INDOOR ACCESSORIES

PART NUMBER	DESCRIPTION	INCLUDED
-------------	-------------	----------

AZAI6WSCDKB	DKN Residential Cloud Wi-Fi Adaptor for Single- and Multi-Zone System (S21)	No
AZAI6WSPDKC	DKN Plus Interface	No
BRC073A6	Wired Remote Controller (Requires Additional Wire Harness)	No
BRC944B2	Wired Remote Controller	No
BRCW901A03	BRC944B2 CONTROL CABLE, 10FT	No
BRCW901A08	Wired Remote Controller Cord - 8m/26ft	No
DCS301C71	Unified On/Off Controller	No
DCS302C71	Centralized Controller	No
DST301BA61	Schedule Timer	No
KAF970A46	Titanium apatite photocatalytic air-purifying filter WITHOUT frame	Yes
KKF936A4	LP CONVERSION KIT	No
KRP067A41E	Adaptor for wired remote controller	No
KRP928BB2S	RA Interface Adaptor for DIII-Net -	No

### OUTDOOR ACCESSORIES

PART NUMBER	DESCRIPTION	INCLUDED
-------------	-------------	----------

KEH064A41	Drain Pan Heater	No
KKG063A44	Back Protection Wire Net	No
KKP937A4	Drain Plug for OD Unit	Yes