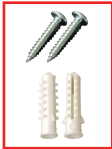
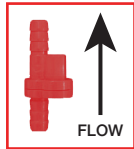


OTHER COMPONENTS

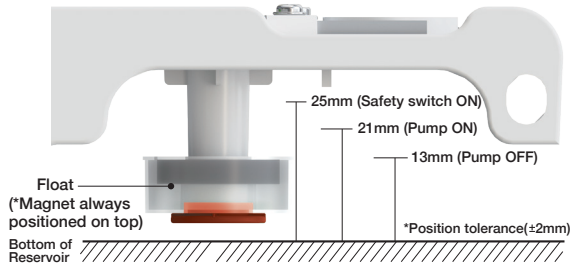


Bolt, Anchor



Anti-Siphon Device

DESCRIPTION OF SENSOR PART



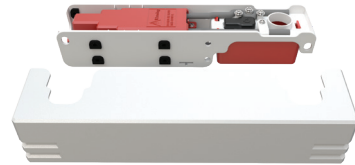
FLOW RATES AT EACH HEAD

Head	0m / 0ft	4m / 13ft	6m / 20ft	8m / 26ft
Rate of Flow(L/h)	29	19	15	12
Rate of Flow(gal/h)	7.66	5.01	3.96	3.17

WARRANTY

All pumps manufactured by or for DiversiTech Corporation (the Company) and sold by the Company under the Asurity or DiversiTech brand are warranted to be free of defects in workmanship and materials for a period of 24 months from date of sale from the distributor to the contractor. The Company will credit, repair or replace, at its option, any Pump if deemed defective within this time period. All products returned to the Company must include a return authorization issued by the Company. The returned product should be suitably packaged and shipped prepaid from the point of shipment to the point designated in the Company's return authorization.

This warranty is a limited warranty and shall be in lieu of any other warranties, expressed or implied, including, but not limited to, any implied warranty of merchantability or fitness for a particular purpose. There are no other warranties that extend beyond the description of the face hereof. The liability of the Company arising out of its supply of said products, or their use shall not in any case exceed the cost of correcting defects in the products as set forth above. The Company shall not be liable for any costs or damage incurred by its customers in the removal or replacement of defective products from units in which the products have been assembled. In no event shall the company be liable for loss of profits, indirect, consequential, or incidental damages.



Asurity™ is a registered trademark of DiversiTech Corporation

©2022 DiversiTech Corporation
Duluth, GA 30097
800.995.2222
0821.4

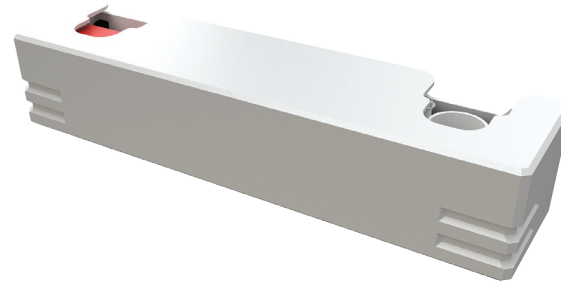


Condensate Pump Ductless

Standard Applications Model: QUIETMINI-M

Installation Instructions

CONDENSATE MANAGEMENT

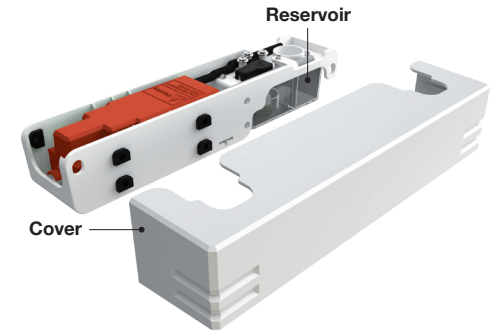
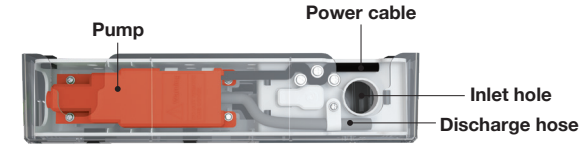


ASURITY®

FUNCTION OF THE PRODUCT

QUIETMINI-M condensate removal pump is designed to remove condensate from air conditioner automatically.

COMPONENTS



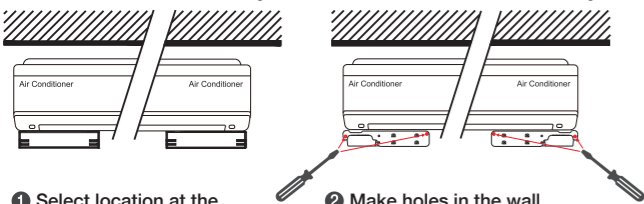
ULTRA QUIET AND LOW PROFILE UNDERMOUNT PUMP



CONDENSATE MANAGEMENT

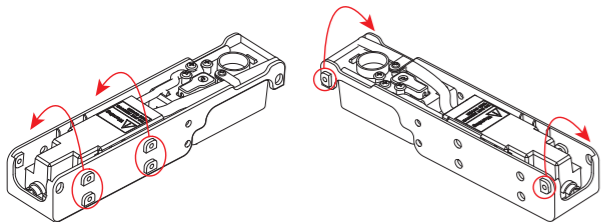
HOW TO INSTALL THE PRODUCT

(Left side of the Reservoir) (Right side of the Reservoir) (Left side of the Reservoir) (Right side of the Reservoir)
Installation at the lower left Installation at the lower right Installation at the lower left Installation at the lower right



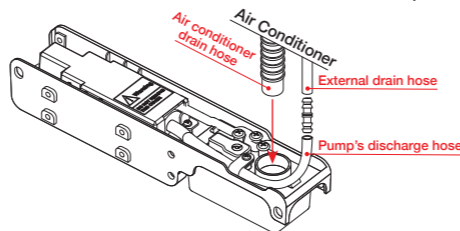
- 1 Select location at the lower left or right* of the air conditioner.
- 2 Make holes in the wall according to the location for installation and then fix the pump with bolts and anchors.

*The product is configured out of the box for installation at the lower right. When installing on the left, move the rubber gaskets to the opposite side as shown in the figure, assemble it, and then install it so that the location of the reservoir is on the left.

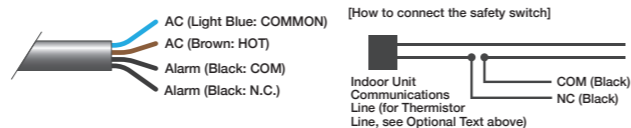


(The marked rubber parts should always have 4 on the front and 2 on the rear.)

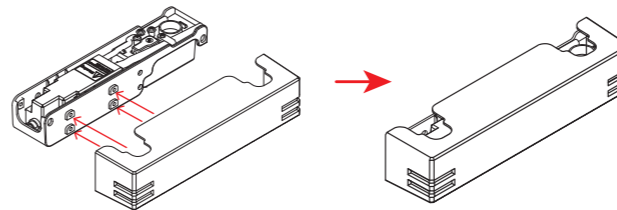
- 3 Insert the air conditioner drain hose all the way into the reservoir and connect the pump's discharge hose to the external drain hose. (At this time, be careful that the air conditioner drain hose does not interfere with the water level sensor inside the product water container.)
 - Hose standard: 6mm or 1/4" (inner diameter) x 9mm or 3/8" (outer diameter)
 - Be careful not to kink or pinch off the hose if bending.
 - Pump comes with a red 1/4" hose mender pre-installed in the discharge hose. This can be replaced with the anti-siphon device included in the box (ensure that it is installed in the correct orientation relative to the direction of flow).



- 4 Ensure that power is shut off to the air conditioning unit. Connect the power cable of the pump to the respective power terminals. Power should be continuously supplied to this equipment except when maintenance or follow-up service is carried out.
- 5 Safety switch installation method (*Optional)
Disconnect power to the air conditioning unit. Disconnect the communication line from its terminal in the indoor unit. Tie the communication wire in with either the COM or the NC black wire. Connect the other black wire to the communication terminal in the indoor unit. This will shut off the compressor of the outdoor unit of the air conditioner when the water level in the pump gets too high, preventing additional condensate from being generated and a potential overflow.
* If the manufacturer does not allow a safety switch between the communication line, then complete this process for the thermistor or temperature sensor instead. Be sure to get the help of an installation expert for the air conditioner.



- 6 After installation is complete, install the cover according to the rubber parts.



- 7 Test the pump after installation:

- ▶ Pour a little water into the drain pan of the air conditioner's indoor unit.
- ▶ When the water level increases to about 21mm [.83 in], the pump should turn on for 3 seconds or less, discharging the water, and then turn off. Repeat this step 8-10 times.
- ▶ Check any leakage of water or generation of abnormal noise while the pump runs. Though there may be a loud noise in the first 1-2 operations until the entering air escapes and the pump is primed, this is not a failure.

PRODUCT SPECIFICATIONS

Section	Specification	Section	Specification
Capacity of A/C	Up to 16kw/54,000Btu/h	Available fluid	Condensate of 1-40°C/33-104°F
Power supply	100-240V / 60Hz	Dry running	Not allowed
Power consumption	2.5W	Intermittent Rating	3 minutes
Max. discharge head	8m / 26ft	Safety switch	Max 3A at 110VAC or Max 3A at 240VAC
Max. flow rate	29 LPH / 7.66 GPH	Capacity of reservoir	140mL
Size of outlet port	6mm or 1/4"	Pump size(mm)	62(W) x 59(H) x 282(L)
		Weight	0.5kg

MAINTENANCE

1. Be sure to maintain the equipment in the following order when you stop operation of the air conditioner after summer season or resume operation of the air conditioner in early summer.
2. Be sure to cut off the power supply before maintaining this equipment
3. Remove the cover. Remove the reservoir by pushing the hook like tab closest to the edge of the pump (have a towel prepared in case some water spills out). Detach the hose at the outlet of the reservoir. Keep the spring inside of the hose.
4. Wash the inside of the reservoir with water and mild soap. Wash the filter screen to remove any built up residue or debris.
5. Push the outlet of the reservoir onto the hose. Snap the reservoir back into place by aligning the tabs with the slots.
6. Supply power to this equipment again and test the pump according to Step 7 in How to Install The Product.

SAFETY PRECAUTIONS

Ensure that water is priming the pump at all times. Running the pump dry with only air for long periods of time can potentially damage the pump.

This equipment is produced exclusively for draining the condensate water of an air conditioner.

DO NOT use it except for draining the condensate water of air conditioners. **DO NOT** use this equipment for flammable liquid or hot water of 40°C/104°F or higher. **DO NOT** place inflammables near this equipment.

This appliance is not intended for use by persons (including children) with reduced physical, sensory or mental capabilities, or lack of experience and knowledge, unless they have been given supervision or instruction concerning use of the appliance by a person responsible for their safety. Children should be supervised to ensure that they do not play with the appliance.

Before maintenance or follow-up service of this equipment, please cut off this equipment from the power.

If the power cord is damaged in any way, **DO NOT** use this equipment to prevent any danger.

Do not touch this equipment if it is wet or with wet hands.

To reduce the risk of electrical shock, be certain that the pump is connected to a properly grounded earth.

This equipment is NOT a submersible pump. If this equipment is flooded, be sure to cut off the power supply and then contact a qualified HVAC technician.

Every installation or follow-up service should be done by a qualified service technician.

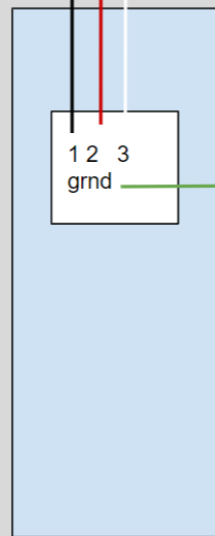
As this equipment is a pump with a short run time, do not use it for applications requiring continuous operation for more than 3 minutes.

This pump is for indoor use only.

BM, BMM, BMHH, BMY, BMX Midea
made models 1 and 2 are power 3 is
communication (not to scale)

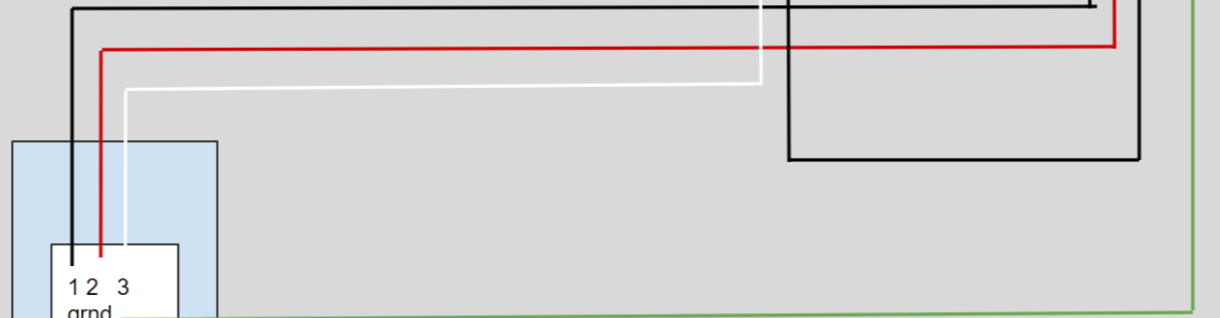
Connect the blue and brown wire on the pump to 1
and 2 on the air handler so there will be 2 wires
connected to each of those terminals. Then take
the 3 wire from the outdoor unit and connect it to
one of the black wires on the pump and then take
the second black wire on the pump and connect it
to 3 on the air handler.

Outdoor unit



Condensate
pump

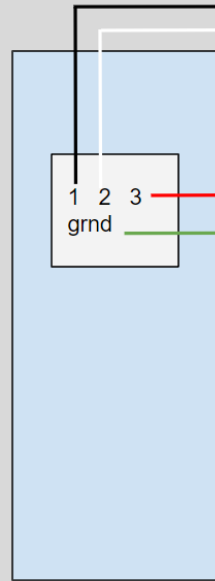
Indoor unit



BMKH Gree made models 1 and 3 are power 2 is communication (not to scale)

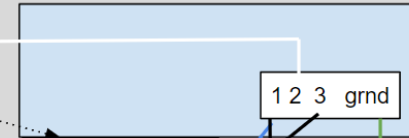
Connect 1 on the outdoor unit to 1 on the indoor unit. Then also connect the blue wire from the pump to 1 on the indoor unit. Connect 2 on the outdoor unit to 2 on the indoor unit. Wire nut one black wire and the brown wire of the pump to the 3 wire coming from the outdoor unit. Then run the second black wire from the pump to the 3 terminal on the indoor unit. Connect ground on the outdoor unit to ground on the indoor unit.

Outdoor unit



Condensate pump

Indoor unit



Wire nut one black and the brown wire from the pump to the 3 wire from the outdoor unit.

