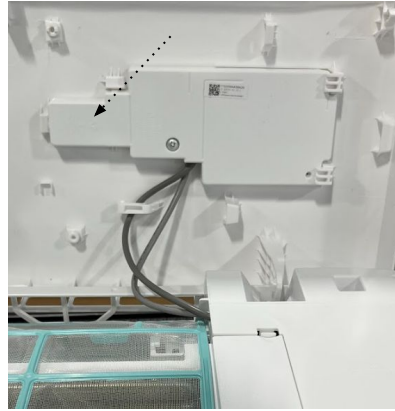


Lift the lid. The wifi connection is on the underside of the lid on the right side



The wifi connection is under this panel



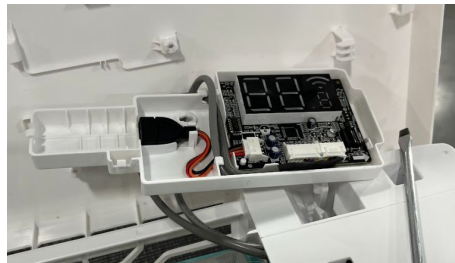
Remove the phillips head screw



Use a flat head screwdriver to loosen the tab(s)



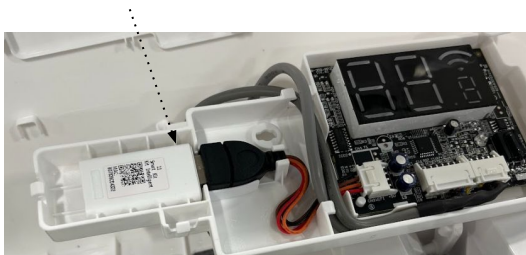
Pull the panel free exposing the wifi port



Then insert the WFWM adapter into the wifi port



WFWM after it is secured in position



Take the panel and pop it back into position using the tab(s) to secure it



Secure the panel back into place with the same phillips head screw.

